



2022-2023



**Achieve more**  
progressing from

**ONCAMPUS**  
LONDON

University of London  
International Foundation Programme

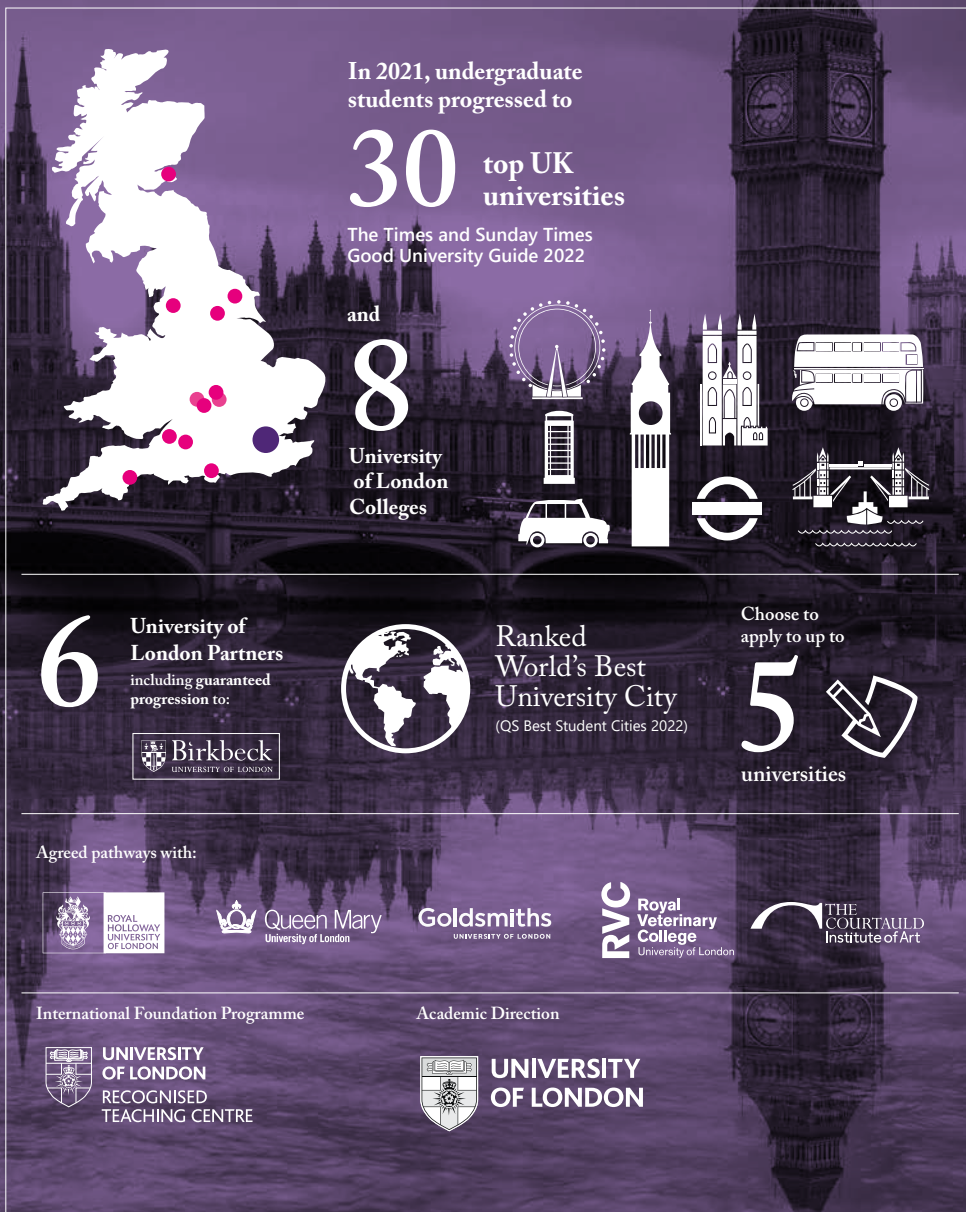


**UNIVERSITY  
OF LONDON**  
RECOGNISED  
TEACHING CENTRE



# ONCAMPUS LONDON

in numbers



From the **ONCAMPUS** London centre at Birkbeck, University of London, we offer an aspirational and mature environment to prepare you for future academic success at top UK universities.

## Contents

<b>+ Reaching a top UK university</b>	
Your route to a top UK university	04
Exceptional support to make your university application	05
Track record of success	06
<b>+ Our University of London Partners</b>	
University partner highlights	08
Progression degrees	18
<b>+ About ONCAMPUS London</b>	
How <b>ONCAMPUS</b> works	20
Our Programmes:	
Undergraduate Foundation Programme (UFP)	22
International Foundation Programme (IFP)	24
International Year One (IY1)	26
Master's Foundation Programme (MFP)	28
<b>+ About Student Life</b>	
Guide to Bloomsbury, London	30
Student Wellbeing	34
<b>+ Applying</b>	
Next steps	36



# Your route to a top UK university

## Preparing for an undergraduate degree

Do you have the following:

- 11-12 years of schooling with good grades?
- an IELTS score of 5.0 or more?
- the ambition to graduate from a top UK university?

## Preparing for a Master's degree

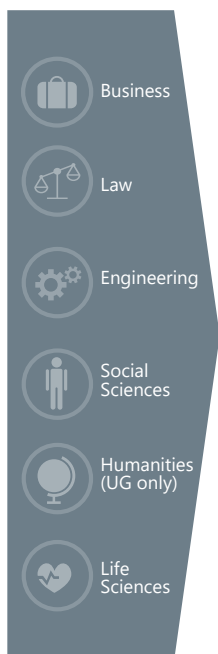
Do you have the following:

- a bachelor's degree or equivalent?
- an IELTS score of 5.5 or more?
- the ambition to gain a Master's degree from a top UK university?

With **ONCAMPUS** London, you can apply to many high ranking universities or specialist institutions

Choose a subject:

Study with **ONCAMPUS**



Access to higher education workshops to complete your university applications.

# Exceptional support to make your university application

Choosing the right university is one of the most important decisions you will make. At **ONCAMPUS** London, our expert Higher Education Advisors will give you all the information, guidance and support to make this decision from the start of your programme.

## Undergraduate degrees

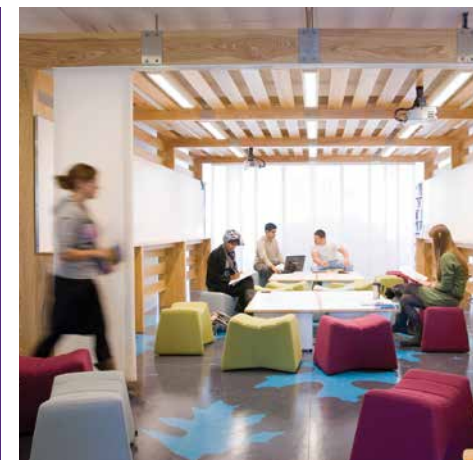
- 1st TERM** UCAS one-to-one appointments  
UCAS drop-in sessions  
Open days and guest lectures  
Apply to five universities
- 2nd TERM** Interview practice  
Academic reference  
Taster lectures and talks
- 3rd TERM** Review your offers  
Support to choose a second option if needed



## Master's degrees

### Expert university application support

- Guidance on researching degree programmes
- Support with your Statement of Purpose
- Academic CV workshop
- Online application support
- Advice on choosing and confirming your offers



Open days, taster lectures and talks from our University of London Partners



# Track record of success

Our students successfully progress to degree programmes at our partner University of London Colleges and other top-rated universities across the UK.

## Undergraduate Foundation Programme

NAME	UNDERGRADUATE FOUNDATION PATHWAY	UNIVERSITY	DEGREE
Lutong	Business	Birkbeck, University of London	Business
Ruoyan	Business	Birkbeck, University of London	Marketing
Gayoung	Business	City, University of London	Business with Finance
Jingjie	Business	City, University of London	Investment and Financial Risk Management
Kuan-Pin	Business	Durham University	Accounting and Finance
Fatima	Business	Goldsmiths, University of London	Marketing
Jinsheng	Business	King's College London, University of London	Geography and Environmental Science
Lihao	Business	Lancaster University	Business Management
Jina	Business	Queen Mary University of London	Economics
Kateryna	Business	Queen Mary University of London	Business Management
Muhammad	Business	Royal Holloway, University of London	Business Management
Osaze Othnie	Business	SOAS University of London	Development Economics
Daryna	Business	University of Bristol	Economics and Finance
Khalid	Business	University of East Anglia UEA	Business Management
Muhammad	Business	University of Leicester	Accounting and Finance
Ambreen	Business	University of Westminster, London	Business Management
Albandari	Engineering	Birkbeck, University of London	Geology
Aaliyah	Engineering	King's College London, University of London	General Engineering
Oyinkansola	Engineering	King's College London, University of London	Biomedical Engineering
Abdullah	Engineering	Queen Mary University of London	Electrical and Electronic Engineering
Haidar Salih	Engineering	Queen Mary University of London	Aerospace Engineering
Sarah	Engineering	Queen Mary University of London	Materials Science and Engineering
Maryam	Engineering	University of Birmingham	Computer Science
Mahanna	Engineering	University of Liverpool	Computer Science and Electronic Engineering
Shareefa	Engineering	The University of Manchester	Chemical Engineering
Jingsong	Engineering	University of Southampton	Electronic Engineering
Svitlana	Humanities	Birkbeck, University of London	Global Politics and International Relations
Muhammad	Humanities	Cardiff University	Law
Ahmed	Humanities	City, University of London	Law
Shakhzod	Humanities	Goldsmiths, University of London	International Relations
Yu-Hsin	Humanities	Goldsmiths, University of London	Media and Communications
Darius	Humanities	King's College London, University of London	Politics
Jayoung	Humanities	Loughborough University	Media and Communication
Ahmed	Humanities	Queen Mary University of London	Politics and International Relations
Weiqiao	Humanities	Queen Mary University of London	International Relations



Siqi	Humanities	Royal Holloway, University of London	Psychology
Yuyang	Humanities	Royal Holloway, University of London	Film, Television and Digital Production
Mudiwa Thando	Humanities	University of Leeds	Law
Anusheh	Humanities	University of Westminster, London	Digital Media
Teruaki	Life Sciences	Birkbeck, University of London	Psychology
Mohammed	Life Sciences	Brunel University, London	Biomedical Sciences
Aliya	Life Sciences	King's College London, University of London	Biomedical Science
Seounghyun	Life Sciences	King's College London, University of London	Chemistry
Meryem	Life Sciences	Queen Mary, University of London	Biomedical Sciences
Vareesha	Life Sciences	Queen Mary, University of London	Psychology
Zhi	Life Sciences	Royal Veterinary College, University of London	Bioveterinary Sciences
Hongcheng	Life Sciences	The University of Manchester	Psychology

## University of London International Foundation Programme

NAME	PATHWAY	UNIVERSITY	DEGREE
Hung-Yu	University of London IFP	Queen Mary University of London	Marketing and Management
Jeongmin	University of London IFP	The University of Edinburgh	Sustainable Development
Jingxi	University of London IFP	The University of Manchester	Economics
Seokyoung	University of London IFP	The University of Manchester	Economics
Samaan Fadi	University of London IFP	University of Reading	Law
Hao	University of London IFP	University of Southampton	Mathematics, Operational Research, Statistics and Economics

## International Year One

NAME	PATHWAY	UNIVERSITY	DEGREE
Sicong	International Year One	Aston University, Birmingham	Business and Management (Year 1 entry)
Eric	International Year One	Birkbeck, University of London	Finance with Accounting (Year 1 entry)
Doaa	International Year One	Brunel University London	Business and Management (Year 2 entry)
Zineb	International Year One	Durham University	Accounting and Finance with Placement Year (Year 1 entry)
Sania	International Year One	University of Westminster, London	Business Management (Year 2 entry)
Zhanpeng	International Year One	University of Westminster, London	Accounting and Business Management (Year 2 entry)

# University Partner Highlights



Birkbeck is a world-class research and teaching institution delivering evening teaching, which means you'll have your days free to study or enjoy everything London has to offer.

## A world-class research and teaching university

Birkbeck is internationally recognised for excellence in the following subject areas:

Arts

Law

Business, Economics and Informatics

Social Science, History and Philosophy

Science

**Birkbeck** classes are arranged to best accommodate a working schedule, maximising the opportunity for high-quality daytime work and internships with classes delivered in the evening.

Top  
**40**  
in the UK

QS World University  
Rankings 2022





# University Partner Highlights



A beautiful campus set in 135 acres of parkland in Surrey with plenty to experience in the local area and easy access to vibrant and active central London.

**77%** for overall student satisfaction, making Royal Holloway rank above the sector average.

National Student Survey (NSS), 2021

Successfully pass your Foundation Programme for the opportunity to progress to a wide range of undergraduate and postgraduate degrees.

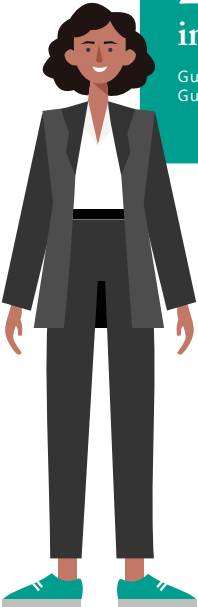
Degrees you can progress to:

- Accounting
- Biological Sciences
- Business
- Computing/Computer Sciences
- Economics
- Finance
- International Business
- International Relations/Development Studies
- Law (LLB)
- Management
- Mathematics/Statistics
- Politics/Political Science
- Psychology

Visit our website [www.oncampus.global](http://www.oncampus.global) for a full list of all degrees available.



Ranked  
**22**  
in the UK  
Guardian University  
Guide 2022





# Goldsmiths

UNIVERSITY OF LONDON

Leaders, believers, creators and debaters – they’ve all studied at Goldsmiths and have been inspired to change things, challenge things and pave the way in all kinds of areas. Goldsmiths’ graduates are now working for [Apple](#), [Google](#), [Tate](#), the [BBC](#), the [British Council](#) and the [NHS](#).

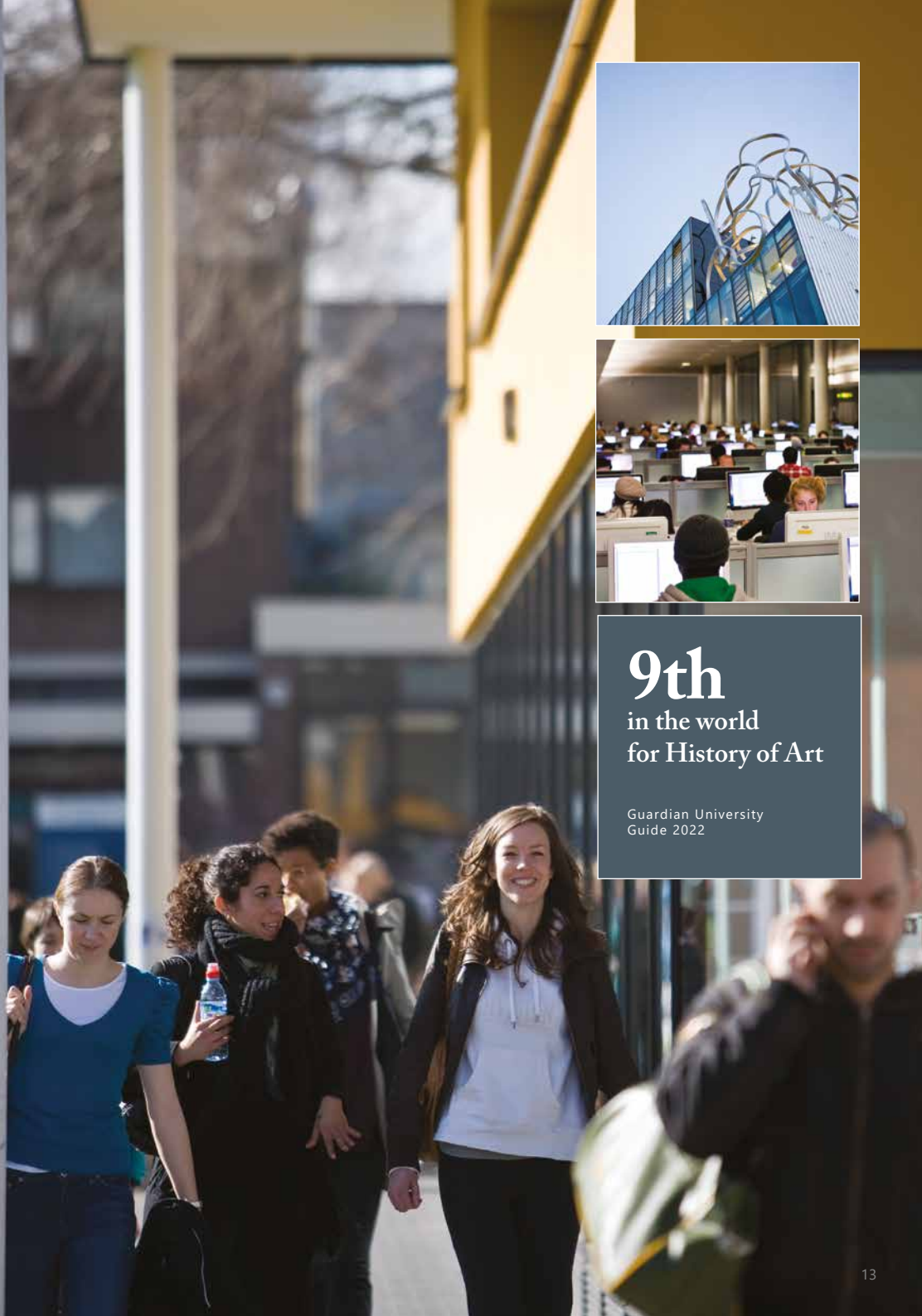
Goldsmiths is internationally recognised for excellence in the following subject areas:

- Media and Communication
- Art and Design
- Psychology
- Anthropology
- Computer Science and Information Systems
- English and Comparative Literature
- Management and Marketing
- Performing Arts (includes Music and Theatre and Performance)
- Politics and International Relations
- Sociology



9th  
in the world  
for History of Art

Guardian University  
Guide 2022





## University Partner Highlights



A member of the prestigious Russell Group of universities, Queen Mary fosters world-class research as well as excellence in education.

### A fully integrated residential campus set in the heart of London

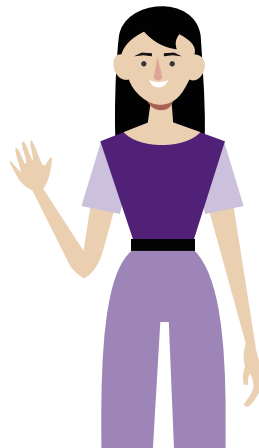
Queen Mary is internationally recognised for excellence in the following subject areas:

Business, Economics, Finance and Management  
Humanities and Social Sciences  
Engineering and Sciences  
Law  
Life Sciences

**Queen Mary** is home to students from 160 different countries. Approximately 50% of the student population are from the EU or overseas.

**10th**  
in the UK for Law  
Complete University Guide 2022

**19th**  
in the UK  
**#117**  
in the world  
QS World University Rankings 2022





## University Partner Highlights



Founded in 1791, the RVC is at the forefront of teaching, research and practice in biological sciences and veterinary medicine and has been behind some important advances in the history of disease control, evolution and human and animal welfare and medicine.

**95%**  
of BSc Bioveterinary Sciences students are  
in work or study six months after finishing

Degrees you can progress to:

Biological Sciences  
Bioveterinary Sciences

**#1**

**Veterinary Science  
in the UK & EU**

QS World University Rankings 2021

Based at Vernon Square  
in the vibrant  
King's Cross area



The Courtauld Gallery is famous for its iconic Impressionist and Post-Impressionist masterpieces and houses one of Britain's best-loved collections.

Progress to:

BA (Hons) History of Art  
Graduate Diploma in the History of Art  
Postgraduate Diploma in the Conservation of  
Easel Paintings  
MA in Buddhist Art: History and Conservation  
MA in the Conservation of Wall Paintings  
MA in Curating the Art Museum  
MA in the History of Art

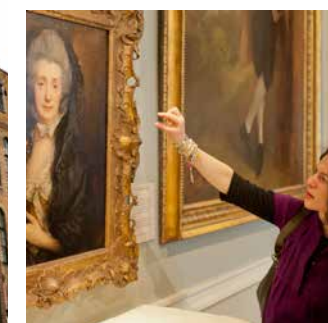
Ranked

**#6**

**for History of Art  
in the UK**

Guardian University Guide 2022

One of the largest  
History of Art  
departments in the UK





# Degrees you can progress to

Use this table to check which **ONCAMPUS** London partners offer degrees in your chosen subject area. Visit our website [www.oncampus.global](http://www.oncampus.global) for a full list of all degrees available.

	Degree subject area	Birkbeck, University of London		Royal Holloway, University of London		Queen Mary University of London		Goldsmiths, University of London		Royal Veterinary College	The Courtauld Institute of Art
		UG	PG	UG	PG	UG	PG	UG	PG	UG	UG
A	Accounting	•	•	•	•	•	•				
	Aerospace Engineering					•					
	Anthropology							•			
	Archaeology	•									
B	Art/Design			•					•		
	Biochemistry			•		•					
	Biological Sciences		•	•		•					
	Biomedical Sciences	•		•		•					
C	Biomedical Engineering					•					
	Bioveterinary Sciences									•	
	Business/Management	•	•	•	•	•	•	•	•		
	Computing/Computer Sciences	•	•	•	•	•		•	•		
D	Criminology	•	•	•				•			
	Digital Media			•				•	•		
	Drama/Film Studies/Theatre	•	•	•		•		•	•		
	Economics	•	•	•		•		•			
E	Education		•					•	•		
	Electronic/Electrical Engineering			•		•					
	Environmental Sciences/Technology	•	•	•		•					
	Finance	•	•	•	•	•					
F	Games Development/Technology			•				•	•		
	Geography	•	•	•		•					
	History	•	•	•	•	•		•	•		
	History of Art	•	•					•			•
G	Human Resource Management		•	•	•	•	•				
	Information Systems/Technology	•	•	•	•						

## Student success

In 2021, **ONCAMPUS** London students progressed to:

Durham University.....	(#05)	University of Southampton.....	(#17)
Loughborough University.....	(#10)	University of York.....	(#18)
The University of Edinburgh.....	(#12)	Royal Holloway, University of London.....	(#22)
Lancaster University.....	(#13)	King's College London.....	(#23)
University of Bristol.....	(#14)	Swansea University.....	(#24)
University of Exeter.....	(#15)	Aston University.....	(#25)
University of Leeds.....	(#16)	The University of Sheffield.....	(#27)

Degree subject area	Birkbeck, University of London		Royal Holloway, University of London		Queen Mary University of London		Goldsmiths, University of London		Royal Veterinary College	The Courtauld Institute of Art
	UG	PG	UG	PG	UG	PG	UG	PG	UG	PG
International Studies/Relations	•		•	•	•		•	•		
Journalism	•	•					•	•		
Languages/Linguistics	•	•						•		
Law	•	•	•		•		•			
Marketing	•	•	•	•	•	•	•	•		
Material Sciences					•					
Mathematics/Statistics	•	•	•	•	•					
Mechanical Engineering					•					
Media	•	•	•	•			•	•		
Music			•							
Neuroscience		•	•		•		•	•		
Pharmalogical Sciences					•					
Philosophy	•	•	•							
Physics					•					
Politics/Political Science	•	•	•	•	•	•	•	•		
Psychology	•	•	•		•		•	•		
Social Work/Policy							•	•		
Sociology			•				•			
Software Engineering/Design			•				•			
Sports Management		•								
Tourism										
Zoology			•		•					

The University of Manchester.....	(#28)	SOAS University of London.....	(#77)
University of Birmingham.....	(#29)	Birkbeck, University of London.....	(#Partner)
University of Leicester.....	(#30)	Goldsmiths University of London.....	(#Partner)
Coventry University.....	(#38)	Royal Veterinary College, University of London.....	(#Partner)
University of Liverpool.....	(#40)		
Queen Mary University of London.....	(#51)		
University of Nottingham.....	(#52)		



# How **ONCAMPUS** Works

Our programmes at **ONCAMPUS** London are designed for international students who do not meet the requirements for direct entry to study at university. You will benefit from the support we offer in preparing you to progress to university.



## Increase your English language level

- Academic writing skills
- Academic reading skills
- Presentation and discussion skills
- Listening and note taking

## Improve academic grades and study skills

- Additional year of study equivalent to 13 years of UK study for undergraduate degree
- Demonstrate academic level to meet university requirements
- Present higher grades in Pathway programme than achieved at high school for undergraduate entry
- Learn the study skills essential for success in UK universities
- Additional research study skills for Master's students

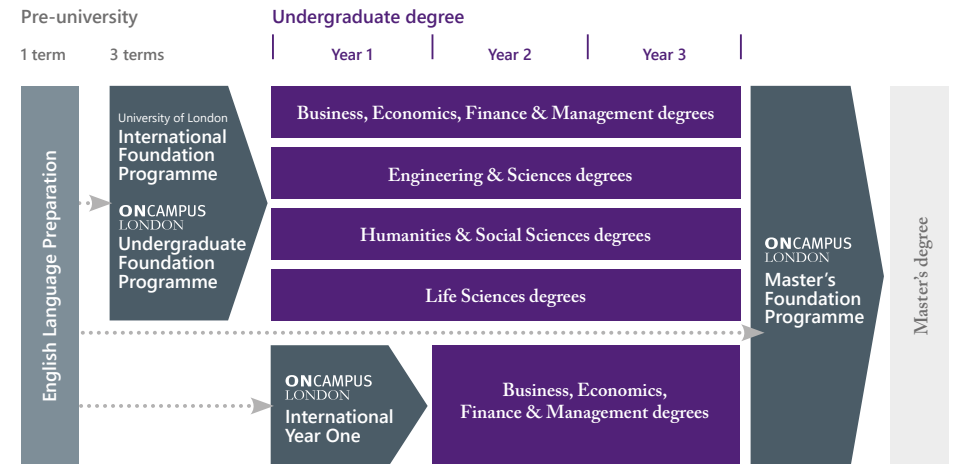
## Expert university progression support

- Expert guidance on which degree to progress to
- One-to-one support sessions
- Faculty visits and meetings

## Progress to university degree

# Your route to a degree at **University of London**

**ONCAMPUS** London offers opportunity for progression to a wide range of undergraduate and postgraduate degrees at leading universities, on successful completion of our Foundation, International Year One or Master's programmes.



## **ONCAMPUS** gives you...

### Outstanding teaching and support

Through every step of your journey with us, you will be supported by highly qualified teachers and support staff, both inside and outside the classroom.

Your personal tutor will meet with you regularly to ensure that you are on track to pass the programme and progress to your chosen degree.

Your personal tutor is also there to help you with any issues you might have inside or outside the classroom.

### A proven track record of success

**ONCAMPUS** is part of Cambridge Education Group, one of the UK's leading university pathway providers since 1952.

Cambridge Education Group was the first private institution to offer university foundation programmes in the UK in 1985, and successfully prepares thousands of students for the UK's top universities every year.

### Part of the University from day one

**ONCAMPUS** London students study at the heart of Birkbeck, close to all the University's facilities.

You will receive a University student card, and with it you will have access to some University facilities while you study your **ONCAMPUS** programme.

You will meet your course leader before you start your degree, and have the opportunity to try out some of the excellent facilities.

### Quality assured

**ONCAMPUS** London is reviewed regularly by the Quality Assurance Agency (QAA), which is responsible for maintaining standards across the UK university system.





# Undergraduate Foundation Programme (UFP)

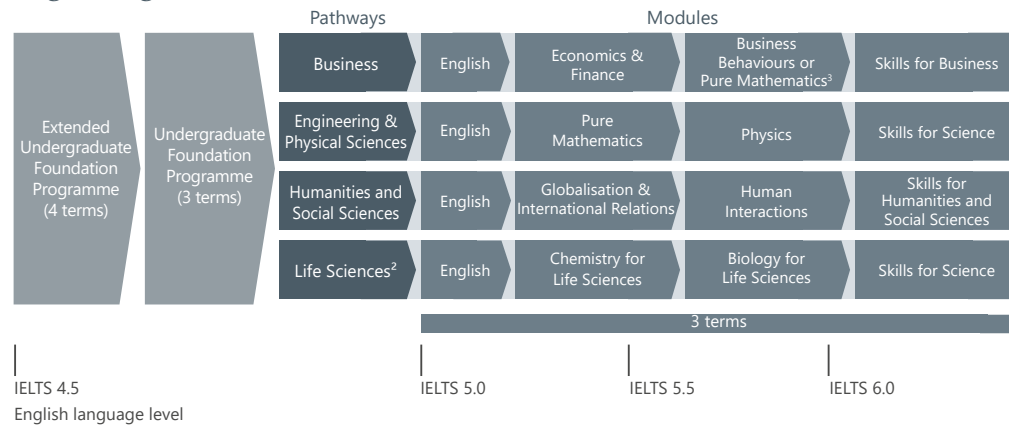
Opportunity for progression<sup>1</sup> to Year 1 of a wide range of undergraduate degrees or the International Year One programme.



Guaranteed progression<sup>1</sup> to Year 1 of a variety of programmes offered by the School of Business, Economics and Informatics, the School of Law and the School of Science at Birkbeck, University of London.



## Degree Progression Route



## Entry criteria

### English level:

#### 5.0 IELTS

From 5.0 IELTS or equivalent, with 5.0 in writing and no single element lower than 4.5, for the 3-term UFP.

From 4.5 IELTS or equivalent, with 4.5 in writing and no single element lower than 4.0, for the extended UFP. By the end of the first term you will need to meet the English entry requirements of the main programme with an internal IELTS exam.

The extended (4 term) programme is available if you do not have the required English language level. This programme includes English followed by 3 terms of UFP.

### Academic requirements:

#### Guideline minimum age:

<sup>1</sup>Some programmes at Birkbeck offer guaranteed progression on meeting the specified entry criteria. Please visit [www.oncampus.global](http://www.oncampus.global) for more information.

<sup>2</sup>If you choose Psychology, you will need to study Pure Mathematics as an additional fourth module.

<sup>3</sup>The module choice here will depend on your chosen degree and Maths ability.

### See Website

Please visit [www.oncampus.global](http://www.oncampus.global) for academic entry requirements.

#### 17+

Students need to turn 18 by December. Students under-18 are subject to a Guardianship arrangement and under-18 supplement.



We will teach you

## Academic skills

relevant to your subject area to fully prepare you for university study



Expert guidance and

## Support

to progress to top UK universities including our University of London partners



### Dates

### Number of terms

Business, Humanities and Social Sciences tuition fee

Engineering, Physical Sciences and Life Sciences tuition fee

Progressing to undergraduate degree starting in

06th June 2022 - 04th June 2023	4	£24,790	£25,480	September 2023
19th September 2022 - 04th June 2023	3	£18,795	£19,485	September 2023
19th September 2022 - 11th August 2023	4	£25,060	£25,750	September 2023
07th November 2022 - 11th August 2023	3.5	£21,930	£22,620	September 2023
04th January 2023 - 11th August 2023	3	£18,795	£19,485	September 2023

All programmes are subject to a £300 registration fee and £2,200 deposit which will be offset against the last term's fees; 3.5 term programmes consist of English language during the first 0.5 term, although some academic content may be included. Classes are not taught on public holidays.

An under-18 supplement applies to all students under the age of 18 at the start of their programme. For more details, visit [www.oncampus.global/about-us](http://www.oncampus.global/about-us)

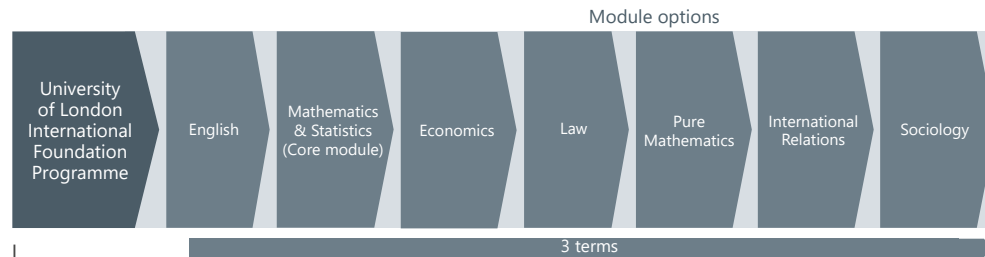
**Note:** Modules are subject to availability, and you will be guided to the best combination of academic modules for your intended degree when you arrive at **ONCAMPUS** London. For more information on module content, visit our website [www.oncampus.global](http://www.oncampus.global)

# University of London International Foundation Programme (IFP)

An academic award from the University of London is a mark of excellence, respected by employers and universities worldwide. This is because the University of London is one of the world's leading universities, internationally recognised for its high academic standards.



## Degree progression route



IELTS 5.5

English language level

## Entry criteria

### English level:

#### 5.5 IELTS

minimum in writing, with no other elements lower than 5.0.

### Academic requirements:

#### See Website

Please visit [www.oncampus.global](http://www.oncampus.global) for academic entry requirements.

### Application Process:

#### By selection

You will need to sit for a Maths test and written paper in your home country. Successful candidates will be invited for a phone interview.

### Guideline minimum age:

#### 17+

Students need to turn 18 by December. Students under-18 are subject to a Guardianship arrangement and under-18 supplement.



### Receive exceptional study materials

developed by the University of London and access the University of London Virtual Learning Environment



### Gain a strong grounding

in Law, Maths and Statistics, International Relations and Sociology, preparing you for a top Law degree

## Pass mark

40% in academic modules  
6.0 IELTS (with no element below 5.5)

## Progression

You will need to meet the entry criteria from your degree offers confirmed by the university when you apply



IELTS 6.5 - 7.0



## Dates

19th September 2022 - 12th May 2023

## Tuition fee

£19,485

## Progressing to undergraduate degree starting in

September 2023

All programmes are subject to a £300 registration fee and £2,200 deposit which will be offset against the last term's fees. This fee includes £1,000 University of London registration fee. An under-18 supplement applies to all students under the age of 18 at the start of their programme.

**Note:** Modules are subject to availability and you will be guided to the best combination of academic modules for your intended degree when you arrive at **ONCAMPUS** London. For more information on module content, visit our website [www.oncampus.global](http://www.oncampus.global)



Expert guidance and support to progress to top UK universities

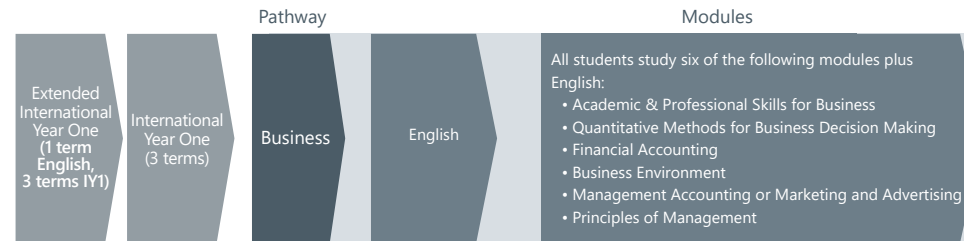


# International Year One (IY1)

This programme offers the opportunity to progress to Year 2 of a wide range of business-related degrees at London-based universities including:

- BSc Accounting & Finance
- BSc Accounting & Management
- BSc Business Management
- BSc Management
- BSc Marketing

## Degree progression route



IELTS 5.0  
English language level

**Note:** Modules are subject to availability, and you will be guided to the best combination of academic modules for your intended degree when you arrive at ONCAMPUS London. For more information on module content, visit our website [www.oncampus.global](http://www.oncampus.global)



**Practise**  
the full range of  
assessment methods you  
will use at university



**A personal  
tutor**  
and subject pathway leaders  
will support you to regularly  
check your progress



**Expert guidance and  
support**  
to progress to  
London-based universities



IELTS 6.5



## Entry criteria

### English level:

**5.5 IELTS**  
or equivalent English level (for 3-term IY1).

You may be offered a 3 or 4-term programme depending on your English level. By the end of the first term of the extended programme, you will need to meet the English entry requirements of the main programme with an internal IELTS exam.

<sup>1</sup>The module choice here will depend on your chosen desired progression.

### Academic requirements:

#### See Website

Please visit [www.oncampus.global](http://www.oncampus.global) for academic entry requirements.

### Guideline minimum age:

#### 17+

Students need to turn 18 by December. Students under-18 are subject to a Guardianship arrangement and under-18 supplement.

Dates	Number of terms	Tuition fee	Progressing to undergraduate degree starting in
06th June 2022 - 04th June 2023	4	£24,790	September 2023
19th September 2022 - 04th June 2023	3	£18,795	September 2023
19th September 2022 - 11th August 2023	4	£25,060	September 2023
07th November 2022 - 11th August 2023	3.5	£21,930	September 2023
04th January 2023 - 11th August 2023	3	£18,795	September 2023

All programmes are subject to a £300 registration fee and £2,200 deposit which will be offset against the last term's fees.

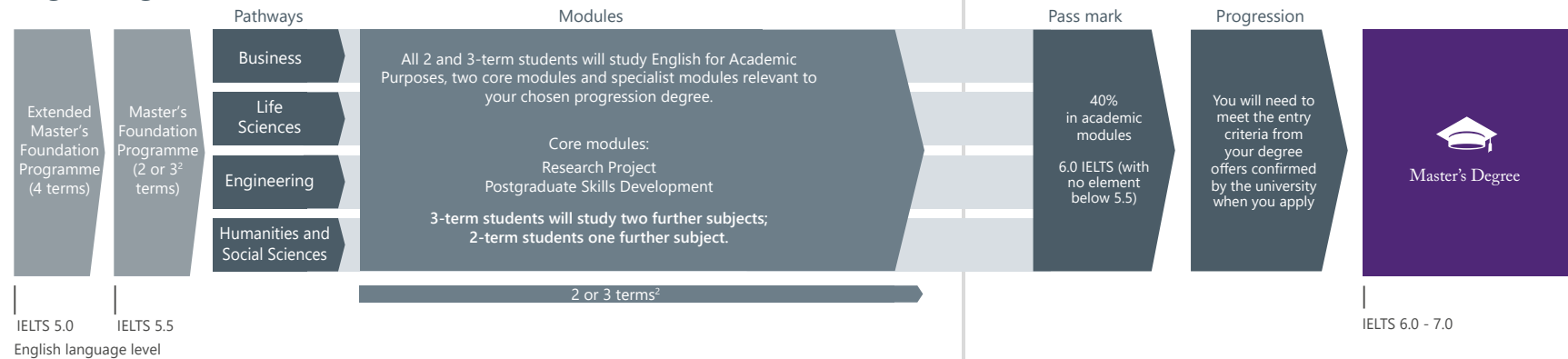
An under-18 supplement applies to all students under the age of 18 at the start of their programme. For more details, visit [www.oncampus.global/about-us](http://www.oncampus.global/about-us)

3.5 term programmes consist of English language during the first 0.5 term, although some academic content may be included. Students wishing to study at Birkbeck from the International Year One will progress to year one of their chosen degree.

# Master's Foundation Programme (MFP)

The Master's Foundation Programme is available as a two or three-term programme, offering opportunity to progress<sup>1</sup> to a wide range of Master's degrees.

## Degree Progression Route



Guaranteed progression<sup>1</sup> to a variety of Master's programmes offered by the School of Business, Economics and Informatics, the School of Law and the School of Science at Birkbeck, University of London.



## Expert

guidance and support to make your postgraduate university application



## Practise

the full range of assessment methods used in UK postgraduate programmes



IELTS 6.0 - 7.0



## Entry criteria

### English level:

#### 5.5 IELTS

From 5.5 IELTS or equivalent, with no single element lower than 5.5 for the 3-term MFP.

From 6.0 IELTS or equivalent, with no single element lower than 6.0 for the 2-term MFP.

An extended programme is available if you do not have the required English language level. This programme lasts 4 terms and includes an English language module (ELPP) followed by 3 terms of MFP.

### Academic requirements:

#### Degree

Successful completion of bachelor's degree or equivalent from a recognised university.

### Guideline minimum age:

#### 21+

<sup>1</sup> Some programmes at Birkbeck offer guaranteed progression on meeting the specified entry criteria. Please visit [www.oncampus.global](http://www.oncampus.global) for more information.

<sup>2</sup> You may be offered a 2, 3 or 4 term programme depending on your English level and academic background. By the end of the first term of the extended programme, you will need to meet the English entry requirements of the main programme with an internal IELTS exam.

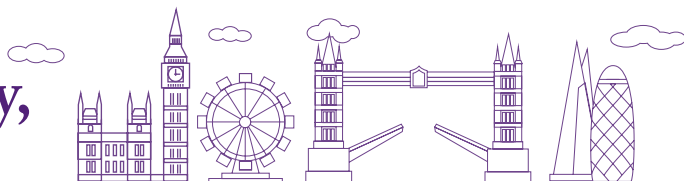
Dates	Number of terms	Tuition fee	Progressing to a Master's degree starting in
06th June 2022 - 04th June 2023	4	£24,790	September 2023
19th September 2022 - 04th June 2023	3	£18,795	September 2023
19th September 2022 - 11th August 2023	4	£25,060	September 2023
07th November 2022 - 11th August 2023	3.5	£21,930	September 2023
04th January 2023 - 04th June 2023	2	£12,530	September 2023
04th January 2023 - 11th August 2023	3	£18,795	September 2023
27th March 2023 - 11th August 2023	2	£12,530	September 2023

All programmes are subject to a £300 registration fee and £2,200 deposit which will be offset against the last term's fees; 3.5 term programmes consist of English language during the first 0.5 term, although some academic content may be included.

Note: Modules are subject to availability and you will be guided onto the best combination of academic modules for your intended degree when you arrive at **ONCAMPUS** London. For more information on module content visit our website [www.oncampus.global](http://www.oncampus.global)



# Guide to Bloomsbury, London



Bloomsbury, a world-renowned intellectual and literary hub, was home to early twentieth-century writers, intellectuals, philosophers and artists, including author Virginia Woolf, and economist John Maynard Keynes who lived in the Georgian buildings now part of Birkbeck's campus.

Also known as the academic heart of London, Bloomsbury harbours some of the coolest, oldest and most prestigious schools and colleges in the whole of the UK with the University of London making Bloomsbury the base for a number of its colleges.



University of London has **185,000** students taking over **74,000 courses**. Many of these colleges are based in Bloomsbury.

You'll notice this upmarket part of London, filled with tree-lined squares and beautiful 20th century Georgian architecture.



You'll find over **200+** museums in London, The iconic **British Museum** being one in Bloomsbury.



## 25

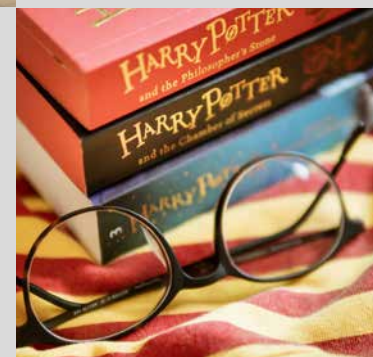
minute



walk to **Bond Street**, synonymous with luxury and designer shopping!

## Bloomsbury Publishing

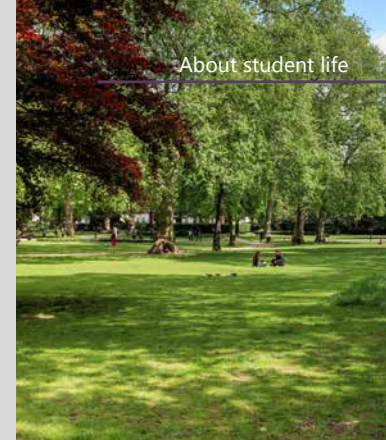
knew a cool wizard when they saw one and in 1997, commissioned the most profitable book deal ever - **Harry Potter**



## Russell Square

the closest and largest green park to **ONCAMPUS London**

its shady lawns are well used on a daily basis by students, tourists, and residents



## 125,035

International students studying in London



## 3



cinemas within a 10 minute walk of **ONCAMPUS London**



## Over 80

restaurants within the city, including Indian, Thai, Italian and many more...

## Over 120,000

students study on campus at University of London Institutions in London



# DIGITAL MAP



## ONCAMPUS London CITY GUIDE PAGE



[oncampus.global/london-city-guide](http://oncampus.global/london-city-guide)



ROYAL HOLLOWAY  
24.5 Miles

GOLDSMITHS  
6.8 Miles



# Student Support Wellbeing

At **ONCAMPUS** we believe looking after your mental health and emotional wellbeing is vitally important, in order to be successful in the classroom and beyond.

## Focus

Navigate your schedule, workload and deadlines. Keep an open mind and prepare to participate and collaborate.

## Learn

Learning is a huge part of your **ONCAMPUS** experience, from the skills you develop in the classroom to the cultures you'll discover in a new place.

## Rest

Making sure you get enough rest will help you settle into your new home and allow you to study to the best of your abilities.

## Eat

To keep you alert, remind you of home or discover something new!

## Explore

Walking, running and cycling are all great ways to figure out the scale and pace of any new location.

## Relax

Discover local hot-spots and quiet little book nooks. Block out useful periods of time to simply down tools and move slowly.

## Exercise

Feed your mind, get involved in university life and make new friends.

## Communicate

Good relationships with those around you will help to build a sense of belonging.

## Friends and family

Establish a group chat that's exclusively aimed at open communication with those you trust the most.

## Fresh start

Build a support network with your new classmates and celebrate positive experiences.

We're here to support you however we can. Take a look at some of these useful links and learn more at [oncampus.global](https://oncampus.global)

**Welfare Officer:**  
[amellilo@oncampus.global](mailto:amellilo@oncampus.global)

**Student Support:**  
[www.oncampus.global/uk/campuses/oncampus-london/the-campus/student-support.htm](https://www.oncampus.global/uk/campuses/oncampus-london/the-campus/student-support.htm)

**Birkbeck Student Life:**  
[www.bbk.ac.uk/prospective/student-life](https://www.bbk.ac.uk/prospective/student-life)

**Student Wellbeing at Birkbeck:**  
[www.bbk.ac.uk/student-services/wellbeing](https://www.bbk.ac.uk/student-services/wellbeing)

# Next Steps



## 1 Submit your application by one of the following methods:

- Online: [www.oncampus.global](http://www.oncampus.global)
- Email: [admissions@oncampus.global](mailto:admissions@oncampus.global)

### Please remember to include all relevant documentation:

- Academic transcripts (with official translations if not originally in English)
- Evidence of English Language level
- Copy of passport
- Explanation of any study gaps
- Copies of any previous/current UK visas

Additional documentation may be required depending on the course. Our Admissions team will contact you should this be the case.



## 2 Our Central Admissions team will review your application.

We will send you an offer letter which will list any outstanding conditions. We will remove any conditions that have already been met.

If we think the course is not right for you, we will suggest an alternative.

If we have any queries about your application, we will contact you for further information.



## 3 To accept your place on the course, you will need to meet all the remaining conditions, including payment of the deposit/registration fee or proof of government sponsorship. We can only confirm your place once all conditions have been met, although once the deposit is paid, we will hold a place for you.

Please note that if you require a visa to study with us, you may need to provide additional evidence to comply with the visa regulations in the UK. These are the requirements of the government and not of ONCAMPUS. Your assistance in meeting these requirements is much appreciated.



## 4 Once you have paid your deposit and met all the conditions of offer, we will confirm your place and send you a Confirmation of Acceptance for Studies (CAS) or a Certificate of Enrolment (CoE) if you do not need a CAS. If you need a visa, you will need your CAS to support your visa application. Please note, that a CAS is going to be issued three months prior to the course start date.



## 5 You will then need to apply for a visa if you require one to study in the UK. It is your responsibility to obtain a visa before you travel to join the course.

If you do not have a valid visa for studies in the UK, you will not be able to join the course. You will need to pay at least the first term's tuition fees before you begin your programme of study at ONCAMPUS. You should arrive on the weekend before the start date of the course; please check your CAS statement or CoE for further details.



## We will send you pre-arrival information.

The accommodation application form will be included in the pre-arrival information. You should complete the form, selecting your preferred option, and return it to ONCAMPUS London by email to [liveinlondon@oncampus.global](mailto:liveinlondon@oncampus.global). London Heathrow is the closest international airport to ONCAMPUS London. You can transfer to your accommodation by Tube, train, coach or taxi. Public transport is the cheapest option. Please read the pre-arrival information we will send you for more details.



### Follow our latest news

- [facebook.com/oncampusglobal](https://facebook.com/oncampusglobal)
- [instagram.com/oncampus\\_global](https://instagram.com/oncampus_global)
- [youtube.com/oncampus\\_uusa](https://youtube.com/oncampus_uusa)
- [linkedin.com/company/oncampus.global](https://linkedin.com/company/oncampus.global)

### HEAD OFFICE

#### Cambridge Education Group

51-53 Hills Road, Cambridge,  
CB2 1NT, United Kingdom

Telephone: +44 (0)1223 345698

Email: [admissions@oncampus.global](mailto:admissions@oncampus.global)

Web: [www.oncampus.global](http://www.oncampus.global)

### CENTRE ADDRESS

99 Gower Street, Bloomsbury  
London  
WC1E 6AA



[www.carbonbalancedprinter.com](http://www.carbonbalancedprinter.com)  
Healeys Print Group - Reg. 2108

Information in this brochure is correct at time of issue in December 2021. ONCAMPUS and the University Partners reserve the right to alter, reschedule or close courses which do not remain viable; students will be informed. Please check our website at [www.oncampus.global](http://www.oncampus.global) for updated information.





**ONCAMPUS**  
LONDON



Visit [www.uncampus.global](http://www.uncampus.global)

00887