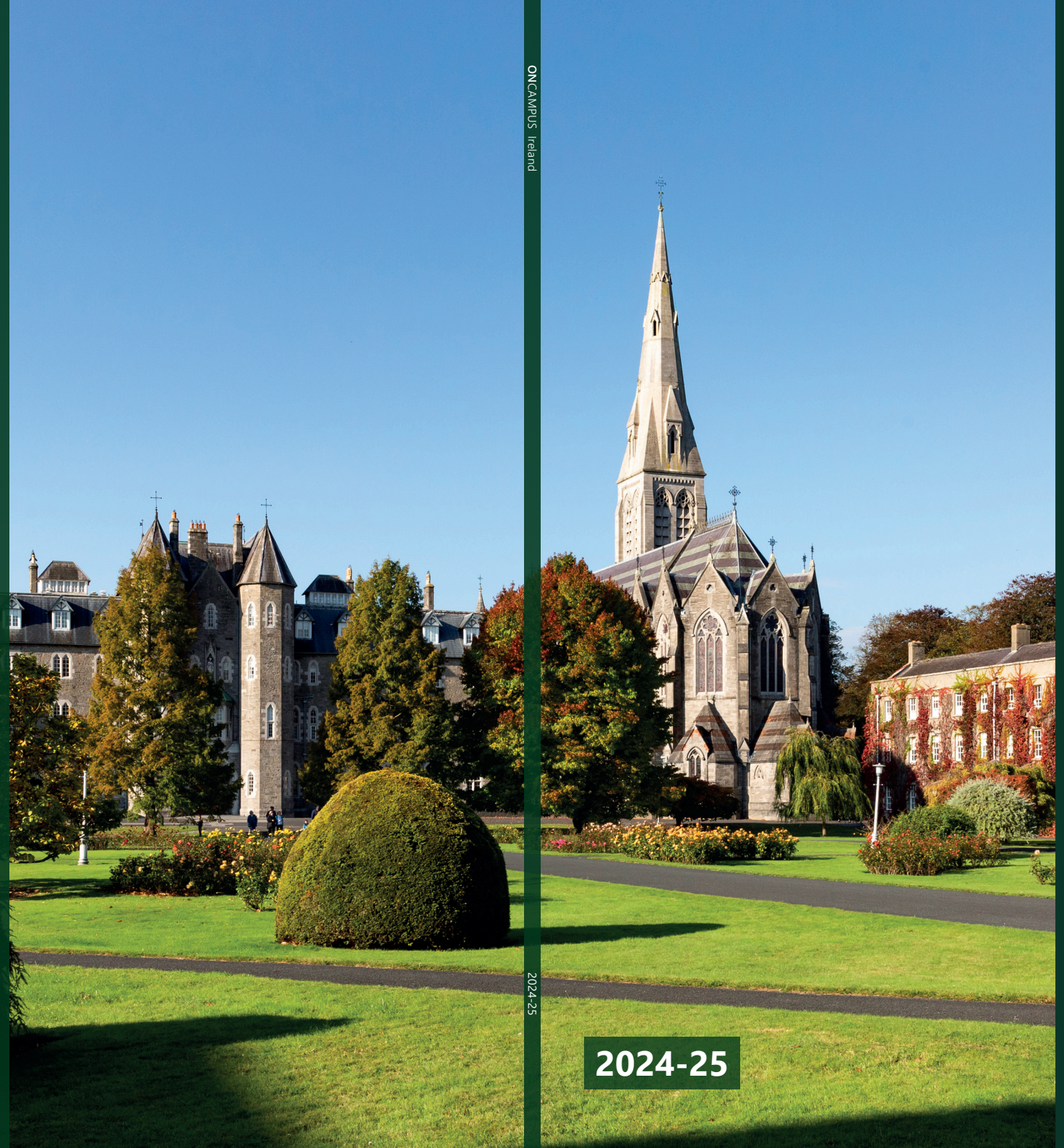




ONCAMPUS Ireland



2024-25



www.oncampus.global/ireland

ONCAMPUS
IRELAND

01056

2024-25

ONCAMPUS
IRELAND

ONCAMPUS Ireland offers undergraduate pathway programmes to international students in Ireland via UniHaven College and Castel Education.

UniHaven College provides a QQI-accredited International Foundation Programme which enables international students to progress to a wide range of degrees at prestigious universities and colleges in Ireland.

Castel Education provides a limited number of guaranteed progression opportunities to medical and health science degrees at universities in Ireland.



45minutes

from Dublin to Maynooth as well as great train links to other Irish cities including Limerick, Cork and many more...



Many Irish universities are in the top 1% of research universities in the world

QS

Contents

+ About ONCAMPUS Ireland	
Your route to Irish universities	04
Support with university applications	05
UniHaven Partners	06
Castel Education	20
+ Progression Degrees	22
+ About ONCAMPUS	
How ONCAMPUS works	24
Your route to a degree	25
+ Our programmes:	
International Foundation Programme (IFP)	26
International Medical Commencement Programme (IMCP)	28
+ About Student Life	
Guide to Ireland	30
+ Applying	
Next steps	32



Why Ireland?

Known as the Emerald Isle, Ireland offers some of the world's most beautiful landscapes and coastlines. It also offers incredible opportunities for international students in terms of careers and job prospects on graduation.

World-Class Education:

Home to some of the world's leading universities and institutions known for their academic excellence.

The third safest country in the world

(Global Peace Index 2022)

Post-Study Work Opportunities:

Ireland offers favourable post-graduation opportunities for international students. The country's 1 and 2 year 'Stay Back' options allow graduates to remain in Ireland for a period after completing their studies to seek employment or gain practical work experience. This, coupled with Ireland's growing economy and presence of multinational companies, makes it an attractive destination for those looking to launch their careers globally.

Cultural Diversity and Global Perspective:

Studying in Ireland exposes international students to a rich cultural tapestry and a diverse community. The welcoming atmosphere and openness to different cultures contributes to a well-rounded educational experience, fostering a global perspective that is increasingly valued in the international job market.

Innovative and Research-Driven:

Ireland is at the forefront of innovation and research, particularly in fields such as technology, science, and business.

English-Speaking Environment:

As English is the primary language spoken, international students find it easy to integrate into academic and daily life in Ireland.



Your route to an Irish university

Preparing for an undergraduate degree

Do you have the following:

- 11-12 years of schooling with good grades?
- an IELTS score of 5.0 or more?
- the ambition to graduate from an Irish university?



UNIHAVEN

offers **conditional and guaranteed progression** options to business, engineering, medical and health science programmes



Business and Social Sciences



Engineering and Science (includes allied medical degrees)



Improve your English



Improve your academic grades and study skills
Study academic modules (relevant to your degree subject)



Expert university application support

Progression to a wide range of Irish universities



Confirm your offers and results

Progress to your chosen university

Undergraduate degree



offers a limited number of **guaranteed progression** options to medicine degrees



Medicine



Improve your English



Improve your academic grades and study skills
Study academic modules (relevant to your degree subject)



Guaranteed progression to your chosen university

Undergraduate degree

Exceptional support to make your university application

Choosing the right university is one of the most important decisions you will make. We will provide all the information and guidance to help you make this decision and support you in making your university applications.

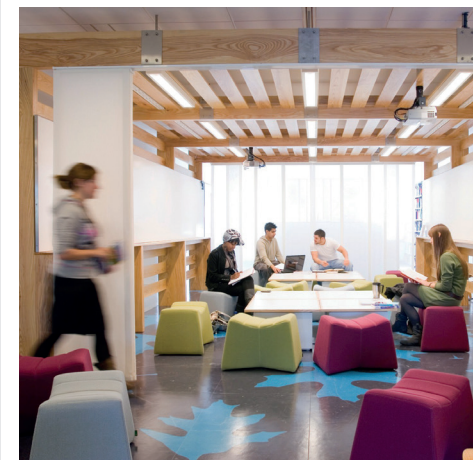
Undergraduate degrees

1st semester

One-to-one application appointments
Open days and guest lectures
Apply to up to five Irish universities

2nd semester

Students will begin submitting university applications
Interview practice
Review your offers
Support to choose a second option if needed



Open days, taster lectures and talks from our Irish university partners

Unihaven Partners

Unihaven College works with a range of Irish university partners to offer international students progression opportunities to a wide range of degrees on successful completion of our programme.



Maynooth University is an internationally recognised institution, one of four constituent universities of the National University of Ireland.

Maynooth University is a place of lively contrasts; a modern institution, dynamic, rapidly-growing, research-led and engaged, yet grounded in historic academic strengths and scholarly traditions. Maynooth offers a range of programmes in the humanities, science and engineering, and social sciences, including business, law, and education.



Ranked #1
Best Young University
THE 2023

170
industry partnerships

11,600
undergraduate
students

92%
of Maynooth graduates
are in employment or
further studies
2022 Graduate Outcomes Survey



Dublin City University (DCU) is a young, dynamic and ambitious university. Since admitting its first students in 1989, DCU has grown in both student numbers and size and is now a multi-campus university.

The University has forged a reputation as Ireland's **university of enterprise**, through its strong, active links with academic, research, and industry partners both at home and overseas. It develops highly sought-after, well-rounded graduates who are ready for the workforce and eager to apply their knowledge and skills in a broad range of settings.



2nd best
Young University in
Ireland in 2023
THE Young University Ranking

Ranked
1st
in Ireland (and 23rd in
the world) for the rate
of graduates employed
within 12 months
QS 2022

**Dublin City
University has
ranked 6th
nationally out of 17
Irish institutions**

Sunday Times Good University
Guide 2022



University Partners



University College Cork (UCC) is based in Cork City, the second largest city in the southernmost county in the Republic of Ireland. UCC was established in 1845 and here on 42 acres of wooded grounds, old limestone buildings blend seamlessly with amazing new modern, award-winning architecture.

When you begin your journey at UCC, you will belong to a diverse and vibrant community of over 24,000 students from more than 100 countries. Students can access more than 50 sports clubs and over 100 societies, and choose from a range of undergraduate courses spanning from Arts, Humanities, Business, Law, Science and Engineering to Medicine and Health.



✓
Progression partner for the International Foundation Studies Programme
UNIHAVEN

1st
in the world for Sustainability

Green Gown Awards 2023

World
top university for the study of 25 subjects

QS World University Rankings by Subject 2022

1st
in Ireland for overall satisfaction, career goal preparation, support and happiness

International Student Barometer 2022



✓
Located in one of Ireland's fastest-growing cities, the University of Limerick (UL) is a QS 5-Star rated university with over 18,000 students. It has a strong focus on international partnerships and an energetic and enterprising atmosphere.

UL is known as a University of 'Firsts' not just for its rankings, but also for its world class facilities; which include a state of the art library and Ireland's only academic flight simulator, its support; UL has dedicated staff for its first year students and a unique First Seven Weeks programme, and for sport; being well known as Ireland's Sporting Campus, attracting some of Ireland's best athletes.



Top 500
university in the world

QS World 2024 and THE World 2024

Ranked
1st
for Overall Excellence Award

The Education Awards 2023

Located in the south west, Limerick is Ireland's 3rd largest city



✓
Progression partner for the International Foundation Studies Programme
UNIHAVEN

University Partners



Munster Technological University is a multi-campus technological university, contributing to the region through the provision of academic programmes that support student development and opportunities, education and research.

MTU has an extensive and impressive regional footprint with six campuses across the South-West region in Cork and Kerry, and a student body of 18,000.

6 campuses

across Cork and Tralee, Co Kerry

400+

research projects underway in collaboration with a wide range of organisations

MTU offers a wide range of sports clubs which cater for both competitive and recreational sport

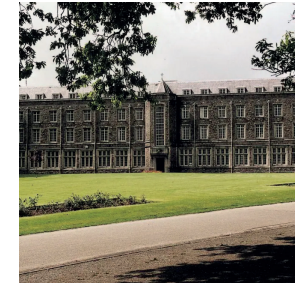


Set in the South East of Ireland, SETU boasts some of the most affordable tuition rates and lowest cost of living in Ireland, as well as easy transportation and travel to Ireland's biggest cities.

SETU is the first technological university in south east Ireland. With a strong background in tech and STEM, SETU prides itself on being a hub for innovation, opportunity, and growth, and is made up of five campuses, each with their own unique courses and specialities, based in - Waterford, Carlow, Wexford, Wicklow and Kilkenny.

Strong background in **Tech & STEM** subjects

Over **18,000** students and 2,000 staff on campus



SETU has partnerships with over 100 universities across the EU including programmes for ERASMUS exchange students



University Partners



Holmes Institute Dublin (HID) is a pioneer in dynamic business education that gets graduates results. Interactive classes, expert educators and a strong community culminate in a learning experience that is second to none.

HID is a proud member of the Holmes Education Group, which has produced 85,000+ successful graduates across more than 13 different centre locations. As a high-quality provider of modern business teaching, HID emphasises intellectual integrity, logical thought, and social responsibility in a student-centred learning environment that welcomes both domestic and international students.



Modern

Business degrees awarded by QQI at Level 8

30 years

of history producing highly desirable business graduates

Holmes Institute Dublin is home to students from all over the world, with a population of over 25 nationalities enrolled at one time.



St Patrick's
Pontifical University

St Patrick's, Maynooth opened its doors as an educational institution in 1795 as the National Seminary, becoming a Pontifical University in 1896. In the intervening two centuries, it has established for itself an impressive reputation for scholarship and learning.

Today, as a Pontifical University, St Patrick's specialises in the study of theology and philosophy and related areas, in one of the most beautiful campuses in Ireland.



A **heritage** of over 200 years

Founded in **1795** with a diverse community of staff and students from across the world

Based in Maynooth, a university town in north County Kildare



University Partners



The Royal Irish Academy of Music is Ireland's oldest conservatoire. RIAM trains gifted musicians from all over the world for careers in music performance, composition and pedagogy.

Graduates are innovative and reflective, with skills that enable them to take on the challenge of a life in the creative arts with confidence and zest.

RIAM teaching staff includes many international prize-winners and principals of professional orchestras in Ireland. These experienced teachers are passionate about working with talented students to unlock their artistic potential.



Top 50
in the world for
performing arts
www.riam.ie

An Associate of
Trinity College

RIAM students have
access to Trinity's
facilities, sports centre
and societies and clubs

Located in the Georgian
Quarter of Dublin City,
minutes from cultural
institutions such as
the National Gallery of
Ireland, Trinity College
and the Abbey Theatre



St. George's University
SCHOOL OF MEDICINE
Grenada, West Indies



Founded in 1976, St. George's University (SGU) is a centre for academic excellence worldwide. With students and faculty drawn from more than 150 countries, SGU is truly an international institution, with a uniquely global perspective.

The SGU School of Medicine is accredited by the Grenada Medical and Dental Council which has been recognised by the World Federation for Medical Education (WFME).

Students have the opportunity to experience medical education in Grenada, the UK and US as part of the 5-year Medical Degree Pathway.



SGU
is the largest source of
physicians for the entire
US workforce¹

¹According to FSMB physician licensure data, 2021

50+
countries around
the world where
SGU graduates have
practiced

SGU's School of
Medicine has nearly
2,000 campus-based
and clinical faculty
who service the
student body



University Partners



Established in 2007, Independent College is a contemporary independent third-level college specialising in Business and Law, situated on the edge of Silicon Docks in the heart of historic Dublin's financial, cultural, entertainment and shopping districts.

As well as a Dublin city centre location and QQI accreditation, Independent College features a 3 day/week timetable and competitive fee structure, supported by comprehensive student support services and focus on finding students' best routes to postgraduation employment opportunities.

Immersive
challenging and high
quality courses

Located adjacent to
Silicon Docks
in the heart of historic
Dublin's financial,
cultural, entertainment
and shopping districts

Independent College
offers specialist
contemporary
Business and Law
courses



RCSI has been at the forefront of healthcare education since its establishment in 1784 and is one of the most innovative and student-focused health sciences universities in the world.

As an RCSI student, you will join a university with a unique surgical heritage that is globally recognised for educational excellence and ground-breaking research. RCSI is Ireland's only specialist health sciences university, offering ultra-modern campus facilities in the centre of Dublin, including one of the most advanced clinical healthcare simulation centres in Europe.

Over €200m
invested in teaching
and learning facilities
since 2017

One of the most
international medical
schools in the world
with over **70%** of its
undergraduate medicine
seats reserved for non-
EU students



**Irish University
of the Year**
for Student
Engagement

The Sunday Times Good
University Guide 2022



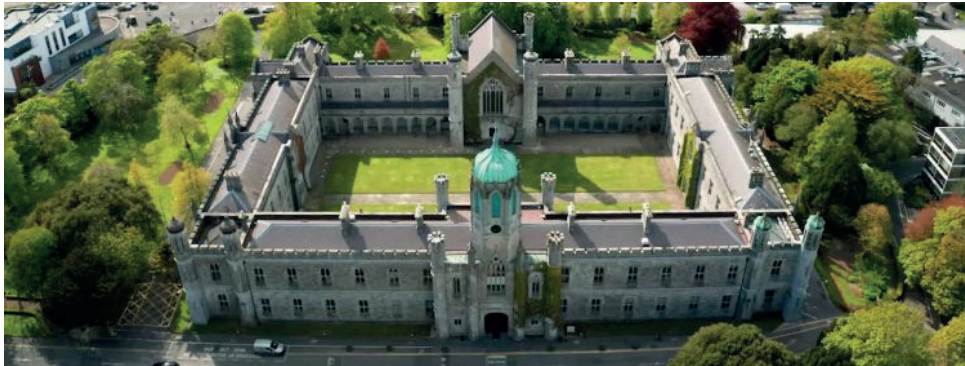
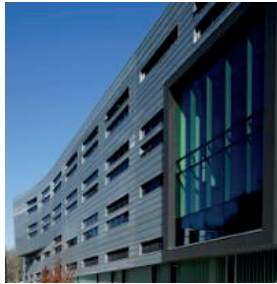
University Partners



Founded in 1845, the University of Galway has earned international recognition as a research-led university with a commitment to top quality teaching.

Made up of five colleges including the college of arts, social sciences and Celtic studies, college of business, public policy and law, college of engineering and informatics, college of medicine, nursing and health sciences and the college of science.

The university has more than 110 active societies and more than 50 sports clubs.



Progression partners for the Medicine Pathway Programme



19,000
students, 4,000
international students from
110 different countries

Awarded
**University of
the Year**

The Sunday Times 2022

Top 300
in the world as
ranked by QS World
University Rankings
2024



Castel Partners

Castel Education is a leading provider of International Educational Services to a wide range of partners throughout the world. Castel provides Undergraduate, Postgraduate and Professional Training Services to Medical & Allied Health Professionals in Ireland.

In collaboration with The Royal College of Surgeons in Ireland (RCSI) and Munster Technological University, Castel delivers an International Medical/ Pharmacy Commencement Programme (IMCP/IPCP), an integrated, streamlined and innovative approach to the preparation of International students for health sciences education.

The programme has two components:

1. English Language Training and
2. RCSI/NUI accredited Certificate in Biomedical Sciences.

Castel Education delivers the English language training component of the programme while RCSI and MTU Kerry deliver the Certificate in Biomedical Sciences.

The IMCP has been running since 2009 and has one intake per year in September. Spaces on the IMCP are limited.

All enquiries and applications to be made to admissions@casteeducation.com



Castel is located in Tralee, County Kerry, in the south-west of Ireland. The town is situated on the northern side of the neck of the Dingle Peninsula.



Students are **guaranteed progression**

to their chosen university on successful completion of the IMCP

Over 1600

Castel alumni are continuing their medical studies in their chosen university

RCSI University of Medicine and Health Sciences



Established in 1784 as the national provider of surgical training, RCSI University of Medicine and Health Sciences has evolved into the only specialist health sciences university in Ireland.

RCSI graduates are highly sought-after by leading employers around the world.

Join a global alumni network of 30,000 healthcare professionals in 96 countries around the world

University of Galway



University of Galway has a growing international reputation based on the quality of teaching and the global impact of its research.

#1 Galway has been dubbed the most charming city by New York Times

96% of graduates are working or in further study within 6 months of graduating

Munster Technological University



Munster Technological University is a multi-campus technological university.

Students will be based at **Sólás building** at the MTU Kerry North Campus.

A student body of **18,000** across MTU's six campuses in Cork and Kerry in the South West of Ireland

University of Limerick



Located in one of Ireland's fastest-growing cities, the University of Limerick (UL) is a QS 5-Star rated university with over 18,000 students.

1st for overall excellence award

The Education Awards 2023

Undergraduate degrees you can progress to

Use this table to check which ONCAMPUS Ireland partners offer degrees in your chosen subject area. Visit our website www.oncampus.global/ireland for a full list of all degrees available.

Degree subject area	Maynooth University	South East Technological University	Dublin City University	Munster Technological University	St Patrick's Pontifical University	University College Cork	Holmes Institute Dublin	University of Limerick	Royal Irish Academy of Music	St. George's University, Grenada	Independent College	RCSI	University of Galway
Accounting	•					•		•			•		
Aerospace Engineering		•											
Animation				•									
Architecture		•				•		•					
Art/Design	•					•							
ATT*											•		
Biological Sciences	•					•							
Biomedical Engineering			•										
Business/Management	•	•	•	•		•	•	•		•			
Chemical Engineering							•						
Childhood Education	•		•	•		•							
Civil Engineering				•									
Commerce	•					•				•			
Computing/Computer Sciences	•	•	•	•		•		•					
Construction		•					•						
Criminology						•	•						
Drama/Film Studies/Theatre						•	•						
Economics	•		•							•			
Electronic/Electrical Engineering	•		•				•						
English						•							
Entrepreneurship						•							
Environmental Sciences						•							
Event Management			•	•									
Finance	•					•		•					
Genetics						•							
Innovation	•		•										
International Studies/Relations			•										
Journalism							•						
Languages/Linguistics						•							

All degrees marked with • are offered via progression from Unihaven
All degrees marked with ^ are offered via progression from Castel.

Degree subject area	Maynooth University	South East Technological University	Dublin City University	Munster Technological University	St Patrick's Pontifical University	University College Cork	Holmes Institute Dublin	University of Limerick	Royal Irish Academy of Music	St. George's University, Grenada	Independent Colleges	RCSI	University of Galway
Law	•		•			•		•					
Marketing	•		•								•		
Mathematics/Statistics	•					•							
Mechanical Engineering		•		•									
Mechatronic Engineering			•										
Media	•					•							
Medicine										•		^	^
Music	•							•	•				
Nursing				•^		•							^
Nutritional Science	•					•							
Occupational Therapy						•							^
Paramedic Studies							•						
Performing Arts						•			•				
Pharmaceutics/Pharmacy	•	•		•		•						•	
Philosophy					•								
Physical Education				•		•							
Physics						•							
Physiotherapy												•	
Podiatric Medicine													
Politics/Political Science			•			•							
Psychology	•					•		•					
Quantity Surveying		•											
Radio, New Media				•									
Set Design		•											
Sociology								•					
Sports	•	•		•				•					
Theology									•				
Veterinary Science				•									
Wildlife Biology				•									

How ONCAMPUS Works

Our programmes at **ONCAMPUS** Ireland providers are designed for international students who do not meet the requirements for direct entry to study at university. You will benefit from the support we offer in preparing you to progress to university.



Increase your English language level

- Academic writing skills
- Academic reading skills
- Presentation and discussion skills
- Listening and note taking

Improve academic grades and study skills

- Additional year of study equivalent to 13 years of Irish study for undergraduate degree
- Demonstrate academic level to meet university requirements
- Present higher grades in Pathway programme than achieved at high school for undergraduate entry
- Learn the study skills essential for success in Irish universities

Expert university progression support

- Expert guidance on which degree to progress to
- One-to-one support sessions
- Faculty visits and meetings

Progress to university degree

Your route to a degree in Ireland

ONCAMPUS Ireland providers offer opportunity for progression to a wide range of undergraduate degrees at leading universities, on successful completion of the International Foundation Programme or the International Medical Commencement Studies Programme.

Pre-university

3 terms



UNIHAVEN

International Foundation Studies Programme



CASTEL education

International Medical Commencement Studies Programme

Undergraduate degree

Year 1

Year 2

Year 3+

Business and Social Science degrees

Engineering, Science and Medical-related degrees

Medicine and Biomedical-related degrees

ONCAMPUS gives you...

Outstanding teaching and support

Through every step of your journey with us, you will be supported by highly qualified teachers and support staff, both inside and outside the classroom.

Your personal tutor will meet with you regularly to ensure that you are on track to pass the programme and progress to your chosen degree.

Your personal tutor is also there to help you with any issues you might have inside or outside the classroom.

A proven track record of success

ONCAMPUS is part of Cambridge Education Group, one of the UK's leading university pathway providers since 1952.

Cambridge Education Group was the first private institution to offer university foundation programmes in the UK in 1985, and successfully prepares thousands of students for the UK's top universities every year.

A truly international experience

Our programmes attract students from a wide range of countries and cultures.

Our aim is to create a truly international environment to broaden your experience and improve your English language both inside and outside the classroom.



International Foundation Studies Programme (IFP)

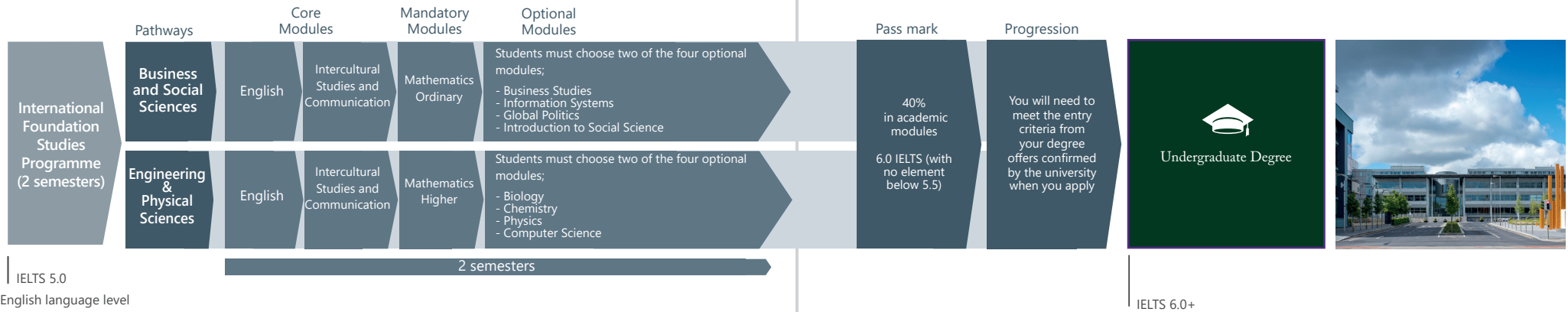


Delivered in Maynooth through Unihaven

UNIHAVEN

Guaranteed progression¹ to Year 1 of a wide range of undergraduate degrees at our partner universities

Degree Progression Route



Entry criteria

English level: From 5.0 IELTS

From 5.0 IELTS or equivalent, with 5.0 in writing and no other single element lower than 4.5

Applicants must hold a certificate of secondary education at GCSE level or equivalent to include a minimum pass grade in maths and a minimum pass grade in four other subjects.

Academic requirements: See Website

Please visit www.oncampus.global for academic entry requirements.

Guideline minimum age: 17+

Students need to turn 18 by the end of the programme. Students under-18 are subject to a Guardianship arrangement and under-18 supplement.

¹subject to achieving progression criteria. Please visit www.oncampus.global/ireland for more information.

Dates	Number of semesters	Business and Social Sciences tuition fee	Engineering and Sciences tuition fee	Progressing to undergraduate degree starting in
09 September 2024 - 21 April 2025	2	€15,790	€15,790	September 2025
08 January 2025 - 19 July 2025	2	€15,790	€15,790	September 2025

All programmes are subject to a non refundable €450 administration fee plus the following:

Books and LMS Fee	€ 200
Examination Fee	€ 300
Registration Fee	€ 1,200
Insurance (12 months)	€ 150

An under-18 supplement applies to all students under the age of 18 at the start of their programme. For more details, visit www.oncampus.global/about-us

For more information on module content, visit our website www.oncampus.global

International Medical Commencement Programme (IMCP)

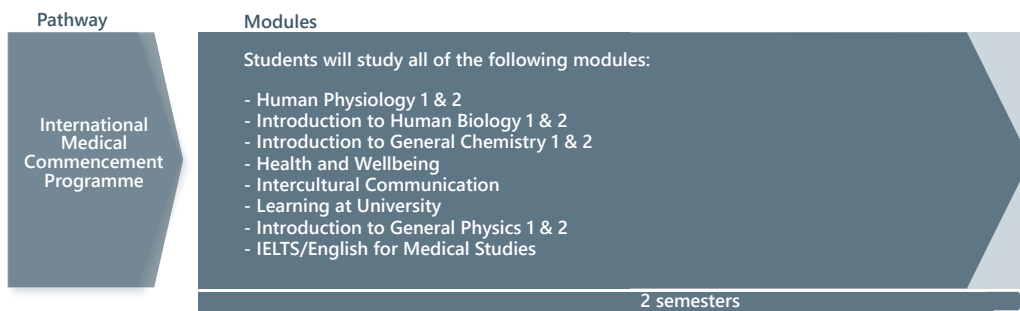


Delivered in Tralee through Castel



Guaranteed progression to Year 1 of a range of medical-related degrees at RCSI, University of Galway, University of Limerick and Munster Technological University on successful completion of the IMCP.

Degree progression route



Pass mark for opportunity for progression from academic modules	English level required (IELTS equivalent) for progression (internal assessment)	Destination
50%	6.5 (with no component lower than 6.0)	Nursing (MTU)
50%	6.5 (with no component lower than 6.0)	Medicine (RCSI)
50%	6.5 (in all components) 6.5 (with no component lower than 6.0)	Medicine Podiatric Medicine, Nursing, Occupational Therapy, Speech & Language Therapy (ULL)
50%	6.5 (with no component lower than 6.0)	Nursing (UL)

Entry criteria

<p>English level:</p>	<p>From 5.5 IELTS</p> <p>From 5.5 IELTS or equivalent, with no single component lower than 5.0 for the IMCP.</p>	<p>Guideline minimum age:</p> <p>17+</p> <p>Students need to turn 18 by December. Students under-18 are subject to a Guardianship arrangement and under-18 supplement.</p>
<p>Academic requirements:</p>	<p>See Website</p> <p>Students must have achieved an average of 90% (95% for Medicine, Occupational Therapy and Speech & Language Therapy) in their High School Exams.</p> <p>Please visit www.casteleducation.com for academic entry requirements.</p>	<p>All enquiries and applications should be made to; admissions@casteleducation.com</p>

Dates	Number of semesters	Tuition fee	Progressing to undergraduate degree starting in
09th September 2024 - 21st April 2025*	2	€22,600	September 2025

*semester dates subject to change, please contact admissions@casteleducation.com for details
 All programmes are subject to a €450 registration fee.
 An under-18 supplement applies to all students under the age of 18 at the start of their programme.
 For more details, visit www.casteleducation.com

Guide to Ireland



ONCAMPUS Ireland offers two locations in Ireland. UniHaven College is based in Maynooth, 25km to the west of Dublin, home also to Maynooth University and St Patrick's Pontifical, making it very much a thriving university town. Castel is based in Tralee, County Kerry, which is on the south west of Ireland, enjoying the coast yet only two hours from the bustling city of Cork.

Maynooth Castle

founded in the early 13th century, became the seat of power for one of the most influential families in Ireland. Explore this stone castle, just a short walk from the centre of Maynooth town.



Just under 50 minutes to Dublin

from Maynooth by train. The capital city has a rich history, a long literary tradition and a huge choice of world-class galleries, museums and cultural attractions.



Wicklow Mountains

The largest of Ireland's six national parks covering 54,000 acres is packed with plenty of attractions and things to do if you are looking to get outdoors



Giant's Causeway

Visit Northern Ireland's only UNESCO World Heritage site and learn how the Causeway was created nearly 60 million years ago



Cork

The second largest city in Ireland, take a stroll through University College Cork, along the banks of the River Lee or into the city to the "best covered market in the UK and Ireland" according to chef Rick Stein



Shopping

Visit one of the most iconic streets in Dublin **Grafton Street**. Known as one of Europe's busiest shopping streets

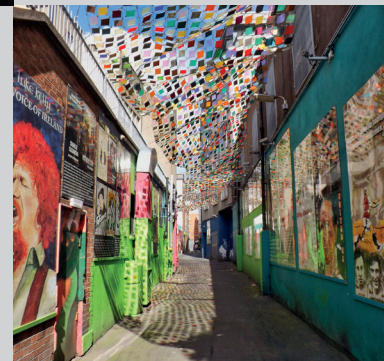


Live events

Ireland is a song-filled country and whether it's traditional Irish music or a large scale concert you won't find it hard to find great live music venues



2 cinemas within a 15 minute bus journey of **ONCAMPUS** Ireland



Visit Banna Strand

a golden stretch with spectacular waves and panoramic views



Over **250,000**

university students study in Ireland



Next Steps - UniHaven

1 Submit your application to UniHaven by one of the following methods:

- Online: agents.oncampus.global
- Email: studywithus@unihaven.ie

Please remember to include all relevant documentation:

- Academic transcripts (with official translations if not originally in English)
- Evidence of English Language level
- Copy of passport
- Explanation of any study gaps
- Copies of any previous/current Irish visas

Additional documentation may be required depending on the course. Our Admissions team will contact you should this be the case.

2 Our Central Admissions team will review your application.

We will send you an offer letter which will list any outstanding conditions. We will remove any conditions that have already been met.

If we think the course is not right for you, we will suggest an alternative.

If we have any queries about your application, we will contact you for further information.

3 To accept your place on the course, you will need to meet all the remaining conditions, including payment of the deposit/registration fee or proof of government sponsorship. We can only confirm your place once all conditions have been met, although once the deposit is paid, we will hold a place for you.

Please note that if you require a visa to study with us, you may need to provide additional evidence to comply with the visa regulations in Ireland. These are the requirements of the government and not of ONCAMPUS. Your assistance in meeting these requirements is much appreciated.

4 Once you have paid your deposit and met all the conditions of offer, we will confirm your place and send you a Letter of Acceptance (LoA). Please note, an LoA is needed to apply for a visa and to get through immigration control on arrival in Ireland.

5 You will then need to apply for a visa if you require one to study in Ireland. It is your responsibility to obtain a visa before you travel to join the course.

If you do not have a valid visa for studies in Ireland, you will not be able to join the course. You will need to pay at least the first semester's tuition fees before you begin your programme of study at ONCAMPUS. You should arrive on the weekend before the start date of the course; please check your LoA for further details.

We will send you pre-arrival information.

6 The accommodation application form will be included in the pre-arrival information. You should complete the form, selecting your preferred option, and return it to ONCAMPUS Ireland by email to liveinireland@oncampus.global. Dublin International Airport is the closest international airport to ONCAMPUS Ireland. You can transfer to your accommodation by train, coach or taxi. Public transport is the cheapest option. Please read the pre-arrival information we will send you for more details.



Follow our latest news

- @oncampusglobal
- @oncampus_global
- @oncampus_uusa
- @oncampus.global
- @studentsofoncampus

HEAD OFFICE

Cambridge Education Group
51-53 Hills Road, Cambridge,
CB2 1NT, United Kingdom
Telephone: +44 (0)1223 345698
Email: admissions@oncampus.global
Web: www.oncampus.global

CENTRE ADDRESS

UniHaven
Moyle Road, Mariavilla,
Maynooth,
Co. Kildare,
W23 H2Y6
Ireland



www.carbonbalancedprinter.com
Healeys Print Group - Reg. 2108

Information in this brochure is correct at time of issue in January 2024. ONCAMPUS and the University Partners reserve the right to alter, reschedule or close courses which do not remain viable; students will be informed. Please check our website at www.oncampus.global for updated information.