

ONCAMPUS
LONDON SOUTH BANK

ONCAMPUS
LONDON SOUTH BANK

EST 1892
LSBU

ONCAMPUS is proud to work in partnership with London South Bank University (LSBU) to offer high-quality university preparation programmes for international students on the university campus.

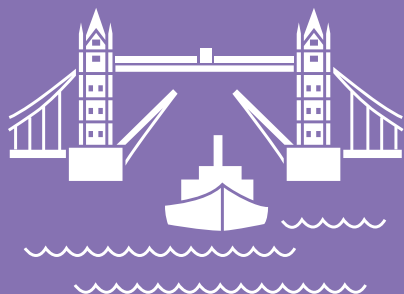
For more than 120 years, LSBU has focused on providing professional opportunities for students with potential from any background and helping them achieve career success.

Our programmes at **ONCAMPUS** London South Bank are designed for international students who do not meet the requirements for direct entry into LSBU.

You will benefit from the support we offer in preparing you to progress to the university.



London has fantastic train links to the rest of the UK, with **Brighton** and **Cambridge** less than an hour away. **Birmingham** is 2 hours away and **Newcastle** 3 hours.



15-minute walk from the River Thames and on the doorstep of the world's leading financial, creative and entertainment attractions.

Contents

+ About London South Bank University

University highlights	04
Faculty highlights	06
Progression degrees	10

+ About ONCAMPUS

How ONCAMPUS works	12
Our programmes:	
Undergraduate Foundation Programme (UFP)	14
International Year One (IY1)	16

+ About Student Life

Guide to South of the River, London	18
-------------------------------------	----

+ Applying

Next steps	22
------------	----



University Highlights

The 2022 Longitudinal Education Outcomes (LEO) data shows that employed LSBU graduates also have the **11th largest median salary overall** in the UK, and 25% of our graduates are earning **£33,700** – the Upper Quartile - one year after graduating.



London named
**Best City
for Students**

QS Best Student Cities Ranking,
2023: Global top 10

Opportunity

for internships and work placements with market leaders such as **Goldman Sachs, KPMG, Ogilvy and Mather**

First-class facilities:

£60 million

investment in student buildings and learning spaces, some outstanding facilities at LSBU include:

- Bloomberg Suite
- DARLab (Digital Architecture Robotic Lab)

LSBU

was ranked

2nd

overall amongst London Modern competitors for career prospects

Guardian University Guide 2022

Est.

1892

London South Bank University (LSBU) has been creating professional opportunities for students for over **125 years**



**25%
yearly**

Merit Scholarship
when you achieve excellent grades



Almost 2,000
International students
from over 130 countries

**Dedicated
welfare &
careers
advisors**



Faculty Highlights

Business School

The Business Solutions Centre and the Employability Team in the LSBU Business School provide opportunities to network with small businesses as well as help you start your own.

Our courses are accredited by ACCA, and you can earn part-qualified accountancy exemptions from ACCA, CIMA and ICAEW



School of Engineering:

This dynamic school teaches Engineering and Computer Science subjects. Amazing facilities, academic excellence and impactful research combine to create an exciting learning environment.



1st
for student satisfaction
in the UK for
Chemical Engineering and
Mechanical Engineering

Complete University Guide 2023



16th
for Mechanical Engineering
Guardian League Tables 2023

Professional accreditations from



School of Arts and Creative Industries

Past students have secured placements at the BBC, ITV, London Live, LadBible, MTV, Reuters, The Guardian, The Daily Mail, The Evening Standard, The Sunday Times, The Daily Telegraph, Time Out, Newsweek, and The Independent.



Top
28
in the UK for graduate prospects
in Art & Design

Complete University Guide 2022



Faculty Highlights

School of Law and Social Sciences

Professionally accredited courses put theory into practice with a wide range of dedicated spaces and equipment to replicate the workplace, as well as work experience opportunities.

Joint

12th 

UK for Teaching Quality

Sunday Times 2022

2nd 

overall for **Research Rating** in London

Sunday Times League Tables 2022

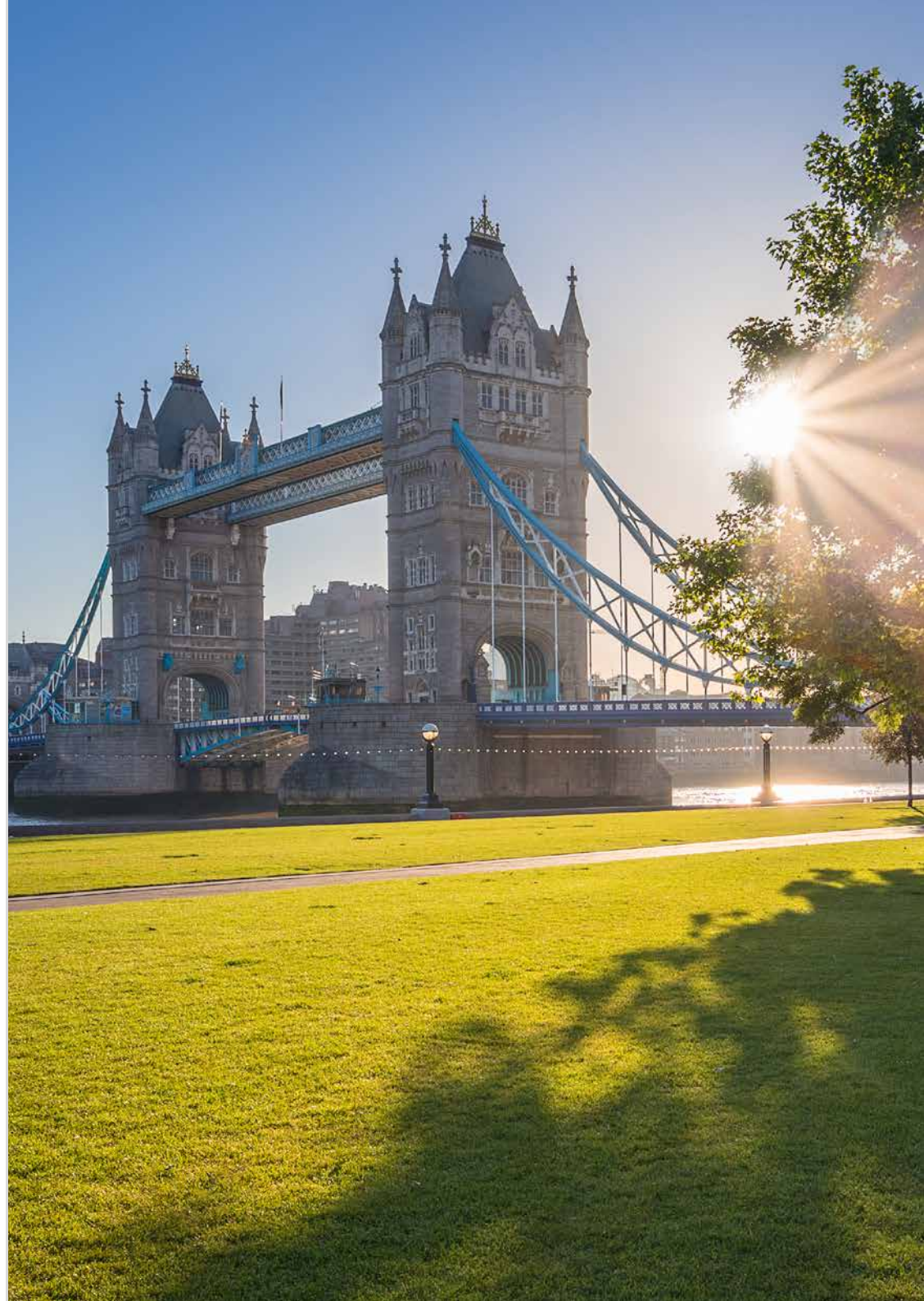
School of Applied Sciences

Our community and industry links, and the richness of our knowledge, research and facilities, create courses and experiences that make our students stand out from the crowd.



Where LSBU graduates find success

- Apple
- Lloyds TSB
- World Bank
- RBS
- BBC
- RADA
- Google
- Channel 4
- United Nations
- British Petroleum
- Foster and Partners
- EY (formerly Ernst & Young)
- Reuters
- Amazon
- Esso



Undergraduate degrees you can progress to

Students who meet the specified entry criteria are guaranteed progression at London South Bank University.

*Progression to Year 2 of these degrees available through the International Year One programme.

Business, Economics, Finance and Management pathway

Pass Mark for progression: **40%** average in academic modules unless specified below
English Required IELTS equivalent: **6.0** no component lower than **5.5**.

BA (Hons) Accounting and Finance*	BA (Hons) Business Management with Hospitality*
BA (Hons) Business Management*	BA (Hons) Business Management with Marketing
BA (Hons) Business Management with Accounting*	BA (Hons) Business Management with Project Management*
BA (Hons) Business Management with Events*	BA (Hons) Business Management with Tourism*
BA (Hons) Business Management with Finance*	

Humanities & Social Sciences pathway

Pass Mark for progression: **40%** average in academic modules unless specified below
English Required IELTS equivalent: **6.0** no component lower than **5.5**.

BSc (Hons) Criminology	BA (Hons) Politics
BSc (Hons) Criminology Sustainability, Black Studies and Social Policy	BA (Hons) Politics Sustainability, Black Studies and Social Policy
BSc (Hons) Criminology with Psychology	BSc (Hons) Psychology
BA (Hons) International Relations	BSc (Hons) Psychology with Criminology
BA (Hons) International Relations Sustainability, Black Studies and Social Policy	BSc (Hons) Psychology (Child Development)
BA (Hons) International Relations with Politics	BSc (Hons) Psychology (Clinical Psychology)
LLB (Hons) Law	BSc (Hons) Psychology (Forensic Psychology)
LLB (Hons) Law with Business Law	BSc (Hons) Sociology
LLB (Hons) Law with Criminal Law	BSc (Hons) Sociology Sustainability, Black Studies and Social Policy
LLB (Hons) Law with Criminology	BA (Hons) Urban and Environmental Planning

Engineering and Physical Sciences pathway

Pass Mark for progression: **40%** average in academic modules unless specified below
English Required IELTS equivalent: **6.0** no component lower than **5.5**.

BEng (Hons) Advanced Vehicle Engineering	BSc (Hons) Engineering Product Design
BSc (Hons) Architectural Technology	BSc (Hons) Forensic Science
BSc (Hons) Biomedical Science	BSc (Hons) Information Technology
BSc (Hons) Bioscience	BEng (Hons) Mechanical Engineering
BSc (Hons) Building Surveying	BSc (Hons) Product Design
BEng (Hons) Building Services Engineering	BSc (Hons) Quantity Surveying
BEng (Hons) Chemical and Energy Engineering	BSc (Hons) Sports and Exercise Science
BEng (Hons) Chemical Engineering	These integrated master's degrees combine undergraduate and postgraduate level study:
BEng (Hons) Civil Engineering	
BSc (Hons) Commercial Management (Quantity Surveying)	
BSc (Hons) Computer Science	
BSc (Hons) Construction Management	MEng (Hons) Chemical and Energy Engineering
BEng (Hons) Electrical and Electronic Engineering	MEng (Hons) Chemical Engineering
BEng (Hons) Electronic and Computer Systems Engineering	MEng (Hons) Mechanical Engineering
BEng (Hons) Electronical Power Engineering	

Art & Design pathway

Pass Mark for progression: **40%** average in academic modules unless specified below
English Required IELTS equivalent: **6.0** no component lower than **5.5**.

BA (Hons) Architecture	BA (Hons) Music and Sound Design
BA (Hons) Fashion Communication	BA (Hons) Photography and Imaging
BA (Hons) Film and Television Practice	
BA (Hons) Media Production	

Progression degrees are expected to change, please check our coursefinder at www.oncampus.global/coursefinder for the most up to date degree list

Progression to Year 2 of these degrees is available through the International Year One programme which is offered with an **Integrated CAS**.

Year
1

Year
2



How ONCAMPUS Works

Our programmes at **ONCAMPUS** London South Bank are designed for international students who do not meet the requirements for direct entry into LSBU. You will benefit from the support we offer in preparing you to progress to the university.



Increase your English language level

- Academic writing skills
- Academic reading skills
- Presentation and discussion skills
- Listening and note taking

Improve academic grades and study skills

- Additional year of study equivalent to 13 years of UK study for undergraduate degree
- Demonstrate academic level to meet university requirements
- Present higher grades in pathway programme than achieved at high school for undergraduate entry
- Learn the study skills essential for success in UK universities

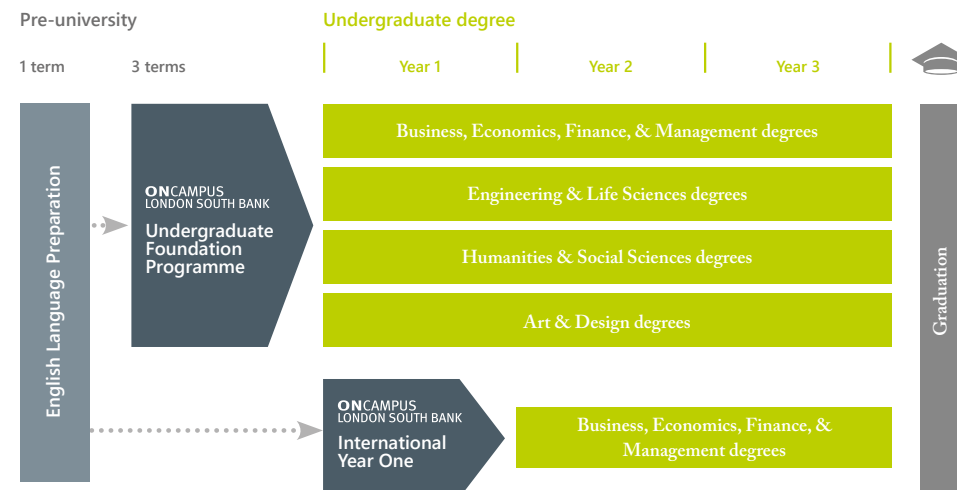
Expert university progression support

- Expert guidance on which degree to progress to
- One-to-one support sessions
- Faculty visits and meetings

Progress to university degree

Your route to a degree at London South Bank University

ONCAMPUS London South Bank offers guaranteed progression to a wide range of undergraduate degrees at LSBU on successful completion of our programmes.



ONCAMPUS gives you...

Outstanding teaching and support

Through every step of your journey with us, you will be supported by highly qualified teachers and support staff, both inside and outside the classroom.

Your personal tutor will meet with you regularly to ensure you are on track to pass the programme and progress to your chosen degree.

Your personal tutor will also be there to help you with any issues you might have inside or outside the classroom.

A proven track record of success

ONCAMPUS is part of Cambridge Education Group, one of the UK's leading university pathway providers since 1952.

Cambridge Education Group was the first private institution to offer university foundation programmes in the UK in 1985, and it successfully prepares thousands of students for the UK's top universities every year.

Access to the university from day one

The **ONCAMPUS** centre is located at the heart of the university, close to all of its facilities.

You will receive a university student card, and, with it, you will have access to all of the university's facilities, clubs, and societies while you are a part of the **ONCAMPUS** programme.

You will meet your course leader at the university before you start your degree and have the opportunity to try out some of the excellent facilities.

Quality assurance

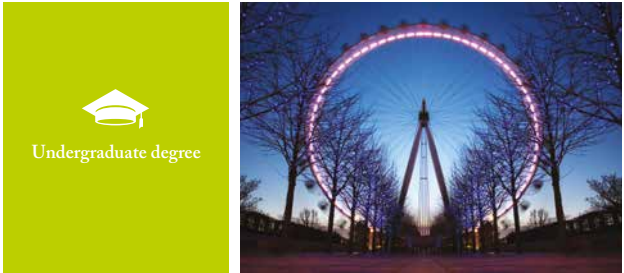
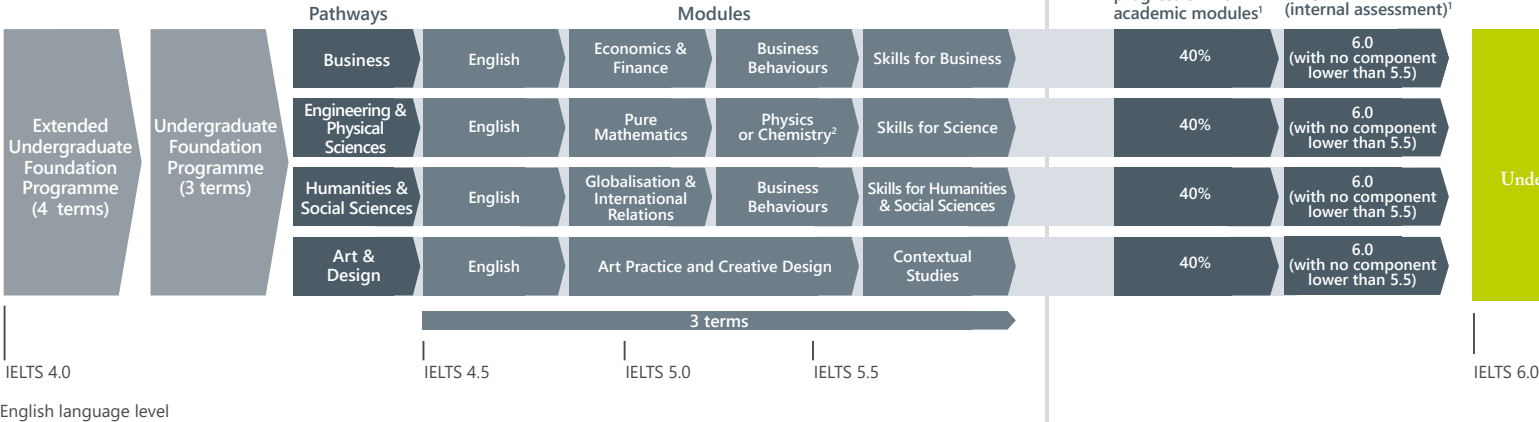
ONCAMPUS London South Bank is reviewed regularly by the Quality Assurance Agency (QAA), which is responsible for maintaining standards across the UK university system.



Undergraduate Foundation Programme (UFP)

This programme gives guaranteed progression¹ to Year 1 of a wide range of undergraduate degrees or the International Year One in Accounting and Finance, Business and Management, or Economics.

Degree progression route



Entry criteria

English level: From 4.5 IELTS

Minimum 4.5 IELTS or equivalent, with no single element less than 4.0, for 3 term UFP. An extended programme is available if you do not have the required English language level. This programme lasts 4 terms and includes an English language module (ELPP) followed by 3 terms of UFP.

Academic requirements: 11-12 years

Successful completion of 11-12 years of schooling with good grades. Please see [oncampus.global](https://www.oncampus.global) for country-specific entry requirements.

Guideline minimum age: 17+

Students under 18 years at the start of their programme are subject to Under-18 Supplement. For more details, see page 16 or visit www.oncampus.global/About-us

Pass mark for guaranteed progression:

- 40% achieved in each academic module
- 6.0 IELTS or equivalent (with no component being lower than 5.5)

¹ Subject to achieving the pass mark for progression, detailed above.

² You can progress to Life Sciences degrees by studying Chemistry on the Engineering pathway.

For progression degrees, see pages 10 and 11.



"I would recommend **ONCAMPUS** LSBU, especially to my Indonesian friends, because of the beautiful campus, and the really helpful staff, especially the teachers, who are so friendly. I have had a brilliant time here."

Rahmah, Indonesian, *Business Management*

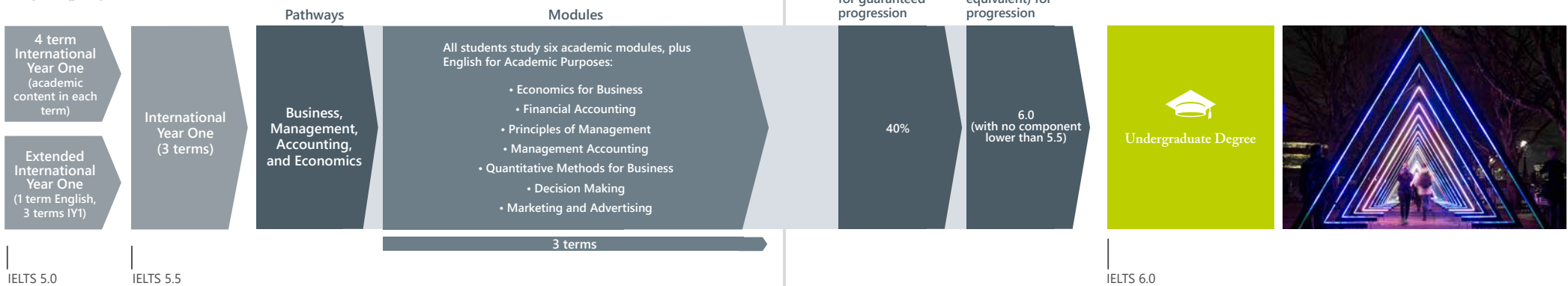
Dates	Number of terms	Business and Humanities & Social Sciences tuition fee	Engineering & Physical Sciences and Art & Design tuition fee	Progressing to undergraduate degree starting in
05 June 2023 – 09 June 2024	4 (Extended)	£20,260	-	September 2024
18 September 2023 – 09 June 2024	3	£15,195	£16,425	September 2024
18 September 2023 – 09 August 2024	4 (Extended)	£20,260	£21,490	September 2024
06 November 2023 – 09 August 2024	3.5	£17,730	-	September 2024
08 January 2024 – 09 August 2024	3	£15,195	-	September 2024

All programmes are subject to a £300 registration fee and £2,200 deposit which is offset against the last term's fees. 3.5 term programmes consist of English language during the first 0.5 term, although some academic content may be included. Fee subject to change, please check [oncampus.global](https://www.oncampus.global) for the latest fees.

International Year One (IY1)

International Year One Business offers guaranteed progression* to Year 2 of BA (Hons) Accounting and Finance, BA (Hons) Business Management with an option to specialise in six subject areas, BSc (Hons) Economics with an option to specialise in two subject areas, and BA (Hons) Marketing with an option to specialise in two subject areas.

Degree progression route



English language level

Entry criteria

English level:

From
5.5 IELTS

Minimum 5.5 IELTS or equivalent, with no single element less than 5.0, for 3-term IY1.

Two 4-term programmes are available depending on your English language and/or academic level.

Academic requirements:

12 years

Successful completion of high school with good grades. Please see oncampus.global for country-specific academic entry requirements.

Guideline minimum age: 17+

Students under 18 years at the start of their programme are subject to an Under 18 Supplement. For more details, visit www.oncampus.global/About-us

Pass mark for guaranteed progression:

- 40% achieved in each academic module
- 6.0 IELTS or equivalent (with no component being lower than 5.5)

* Subject to meeting specified entry criteria.

For progression degrees, see pages 10 and 11.



"LSBU is a central location in the heart of London City. People are amazing here, the students here are multicultural and friendly, the teachers and tutors are experts in their academics fields."

Moksharth Indian, *Business*

Dates	Number of terms	Tuition fee	Progressing to Year 2 of an undergraduate degree starting in
05 June 2023 – 09 June 2024	4 (Extended)	£20,260	September 2024
18 September 2023 – 09 June 2024	3	£15,195	September 2024
18 September 2023 – 09 August 2024	4 (Extended)	£20,260	September 2024
06 November 2023 – 09 August 2024	3.5	£17,730	September 2024
08 January 2024 – 09 August 2024	3	£15,195	September 2024

All programmes are subject to a £300 registration fee and £2,200 deposit which is offset against the last term's fees. 3.5 term programmes consist of English language during the first 0.5 term, although some academic content may be included. Fee subject to change, please check oncampus.global for the latest fees.

Guide to South of the River, London

London was named the **best student city in the world** (QS World University rankings 2023), and our unique city-campus is nestled in the heart of vibrant South London - meaning everything's easily accessible. Our central location means we have strong links with a wide range of industries, from global brands and local businesses. You can live, learn, and thrive in our buzzing zone 1 location, with everything you need in one place.



More than
190
countries represented
by London students



200+



London is home to over
200 museums
including The British Museum,
National History Museum, Tate
Modern and V&A Museum.



Over
14,000
restaurants
within the city, including
Indian, Thai, Italian and
many more....



30
minutes
to Westfield Shopping Centre
and the O2 Arena by train



Over
8.7 Million
People Live
in London

125,035
International
students
studying in London



University lectures,
faculty visits and
experience days
will help you get the
most out of academic
life in London

300
languages spoken
in London, more
than any other city
in the world



DIGITAL MAP

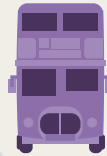


ONCAMPUS LSBU CITY GUIDE PAGE



oncampus.global/london-city-guide

▲ To Chinatown: 2.2 Miles



▲ To South Bank Centre: 1.5 Miles

Southwark



▲ To Brick Lane: 2.6 Miles

▲ To Tate Modern: 1.4 Miles

▲ To St Paul's Cathedral: 2 Miles



The Shard

Borough

David Bomberg House

Borough Road Building
Faculty Of Arts, Humanities,
Engineering, Science
And The Built Environment

Keyworth Building

ONCAMPUS

Faraday Wing
Faculty Of Business

Perry Library



Newington Gardens

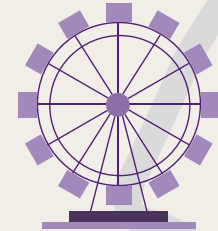
London South Bank University Campus

Elephant & Castle

◀ To Westfield Shopping Centre: 7.1 Miles

Lambeth North

WATERLOO STATION

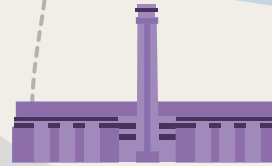


London Eye: 0.8 Miles

To Big Ben & Westminster: 1.4 Miles

Lambeth Palace Gardens

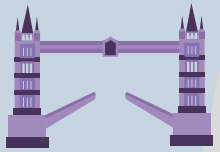
Westminster



Tate Modern



Shakespeare's Globe



Tower Bridge



London Bridge

Next Steps

1 Submit your application by one of the following methods:

- Online: www.oncampus.global
- Email: admissions@oncampus.global

Please remember to include all relevant documentation:

- Academic transcripts (with official translations, if not originally in English)
- Evidence of English Language level
- Copy of passport
- Explanation of any study gaps
- Copies of any previous/current UK visas

Additional documentation may be required depending on the course. Our Admissions team will contact you should this be the case.

2 Our Central Admissions team will review your application.

We will send you an offer letter which will list any outstanding conditions. We will remove any conditions that have already been met.

If we think the course is not right for you, we will suggest an alternative.

If we have any queries about your application, we will contact you for further information.

3 To accept your place on the course, you will need to meet all the remaining conditions, including payment of the deposit/registration fee or proof of government sponsorship. We can only confirm your place once all conditions have been met, although once the deposit is paid we will hold a place for you.

Please note that if you require a visa to study with us, you may need to provide additional evidence to comply with the visa regulations in the UK. These are the requirements of the government and not of ONCAMPUS. Your assistance in meeting these requirements is much appreciated.

4 Once you have paid your deposit and met all the conditions of offer, we will confirm your place and send you a Confirmation of Acceptance for Studies (CAS) or a Certificate of Enrolment (CoE) depending on the type of visa you require. If you need to obtain a visa, you will need to use your CAS/CoE to support your visa application. Please note a CAS can only be issued up to six months before the start of the course (if you apply from outside the UK) or up to three months (if you are eligible to apply from within the UK).

5 You will then need to apply for a visa if you require one to study in the UK. It is your responsibility to obtain a visa before you travel to join the course.

If you do not have a valid visa for studies in the UK, you will not be able to join the course. You are required to pay at least the first term's tuition fees before you begin your studies at ONCAMPUS. You should arrive on the weekend before the start date of the course; please check your CAS or CoE for further details.

6 We will send you pre-arrival information.

The accommodation application form will be included in the pre-arrival information. You should complete the form, selecting your preferred option, and return it to ONCAMPUS London South Bank by email to liveinlondon@southbank@oncampus.global.

London Heathrow is the closest international airport to ONCAMPUS London South Bank. You can transfer to your accommodation by Tube, train, coach, or taxi. Please be advised that public transport is the cheapest option. Please refer to pre-arrival information that we send you for more details.



At Cambridge Education Group, we care about our planet and our people, and we strive to achieve more.

Follow our latest news

- @oncampusglobal
- @oncampus_global
- @oncampus_uusa
- @oncampus.global
- @studentsofoncampus

HEAD OFFICE

Cambridge Education Group
51-53 Hills Road, Cambridge,
CB2 1NT, United Kingdom
Telephone: +44 (0)1223 345698
Email: admissions@oncampus.global
Web: www.oncampus.global

CENTRE ADDRESS

ONCAMPUS London South Bank
3rd Floor, The Clarence Centre
6 St George's Circus
London, SE1 6FE



www.carbonbalancedprinter.com
Healeys Print Group - Reg. 2108

Information in this brochure is correct at time of issue in February 2023. ONCAMPUS and the University Partner reserve the right to alter, reschedule or close courses which do not remain viable; students will be informed. Please check our website at www.oncampus.global for updated information.

EST 1892 **LSBU**

ONCAMPUS
LONDON SOUTH BANK

Visit www.oncampus.global/lbsu

