

Royal Veterinary College University of London

Founded in 1791, the RVC is the largest and longest-established vet school in the English speaking world. It's at the forefront of teaching, research and practice in biological sciences and veterinary medicine and has been behind some important advances in the history of disease control, evolution and human and animal welfare and medicine.

Based in Camden (London) and on a 575-acre site in Hertfordshire, its two campuses offer a friendly, supportive environment with state-of-the-art facilities for teaching and learning.

- Veterinary medicine courses are accredited by **AVMA, EAEVE, RCVS and AVBC.**
- Veterinary nursing courses are accredited by **ACOVENE and RCVS.**
- Biological sciences courses are accredited by the **Royal Society of Biology.**
- RCVS accreditation ensures RVC veterinary graduates are licensed to work in Ireland, Australia and New Zealand, as well as South Africa.

Degrees that students can progress to:

BSc Bioveterinary Sciences

BSc Biological Sciences

“

I've enjoyed my experience here very much. I have amazing teachers, my peers are all kind and it's an amazing place so I feel right at home. It was pretty easy to make friends, we're all doing this for the first time and have come from all over the world so we have a sense of community and a feeling that we are not alone which eased the process of settling in.”

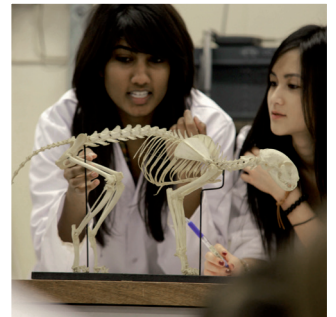
Remas | Saudi Arabian
ONCAMPUS London | Life Sciences Undergraduate Foundation Programme

93%
of BSc Bioveterinary Sciences
students are in work or study six
months after finishing their degree

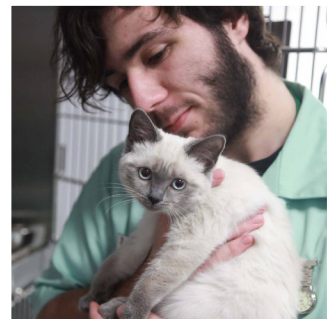
#1

for Veterinary
Science in the
UK & EU

QS World University
Rankings 2021



Awarded
Gold
for teaching
excellence



www.oncampus.global/london

Telephone: +44 (0)1223 345698 Email: admissions@oncampus.global

Follow our latest news

- facebook.com/oncampusglobal
- instagram.com/oncampus_global
- youtube.com/oncampus_uusa
- linkedin.com/company/oncampus.global
- tiktok.com/@studentsofoncampus