

ONCAMPUS Reading

2024-25



[www.oncampus.global/reading](http://www.oncampus.global/reading)

**ONCAMPUS  
READING**

01050



**2024-25**

**ONCAMPUS  
READING**

# ONCAMPUS READING



ONCAMPUS is proud to work in partnership with the University of Reading to offer an opportunity for international students to prepare for undergraduate and postgraduate degree study in the UK, with guaranteed opportunity for progression.

The University of Reading is an outstanding educational institution, with an internationally renowned reputation for the quality of its research and the excellence of its teaching. It is the 26th highest placed UK University among UK universities featured in the QS World University Rankings, 2024.

In easy reach of central London, the University has invested more than £500m in its award-winning campuses in the past decade. It has created new student accommodation and teaching facilities, many of which are nestled within 130 hectares of stunning parkland. This earned Reading's Whiteknights Campus its 13th consecutive Green Flag Award in 2023.

Established in 1892 as a University of Oxford extension college, the University was granted its Royal Charter and full university status in 1926; it was the only university to be awarded a charter between the two world wars.



## Strong business links

Reading is a global town: a hotbed of innovation, culture, creativity, and technology. It hosts the UK headquarters of **Microsoft**, **Oracle** and **Huawei**. Many multinational companies also have UK offices in Reading, such as **Prudential**, **Ericsson** and **PwC**.



**Top 25**  
in the UK for  
**Accounting and Finance**

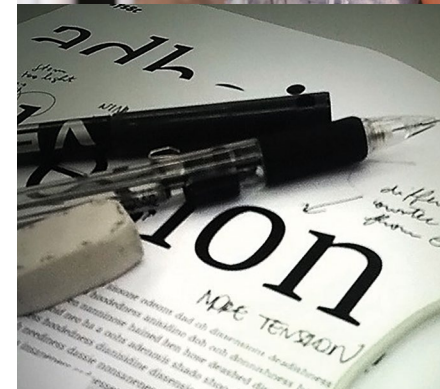
Guardian University Guide, 2024

**UK No.8**  
for career after 15 months in  
**Business and Management**

Guardian University Guide, 2024

## Contents

<b>+ About the University of Reading</b>	
University Highlights	04
Schools and Departments Highlights	06
Henley Business School	08
Progression Degrees	
Undergraduate Degrees	10
Master's Degrees	14
<b>+ About ONCAMPUS</b>	
How ONCAMPUS Works	16
Our Programmes:	
Undergraduate Foundation Programme (UFP)	18
Pre-Master's Programme (PMP)	20
<b>+ About Student Life</b>	
Guide to Reading	22
Accommodation in Reading	26
<b>+ Applying</b>	
Next Steps	28



# University Highlights



The University of Reading is home to more than 27,000 students from around 160 countries. It is proud to be a research-intensive university, working with governments, international agencies, businesses, and charities striving to tackle some of the biggest problems facing the world today, such as climate change, heart disease, and international conflict.

**98%**  
of research is of international standing

Based on the submissions judged to be world leading, internationally excellent and internationally recognised in overall quality in the latest Research Excellence Framework (REF) 2021

**26th** 

highest placed UK University ranked in the QS World University Rankings 2024

**Top 10**

in the UK for Education  
Guardian University Guide, 2024

Five-time winner of the **Queen's Anniversary Prize** for Higher Education

**25th**

in the UK for Business & Management Studies  
Complete University Guide, 2024

**1st**

Greenest university in the UK  
People and Planet University League 2023/24

The main campus **Whiteknights**

is set in 130 hectares of beautiful parkland with easy access to London

Winner of the Green Flag Award for the 13th year in a row, 2023

World Top 200

**169th**

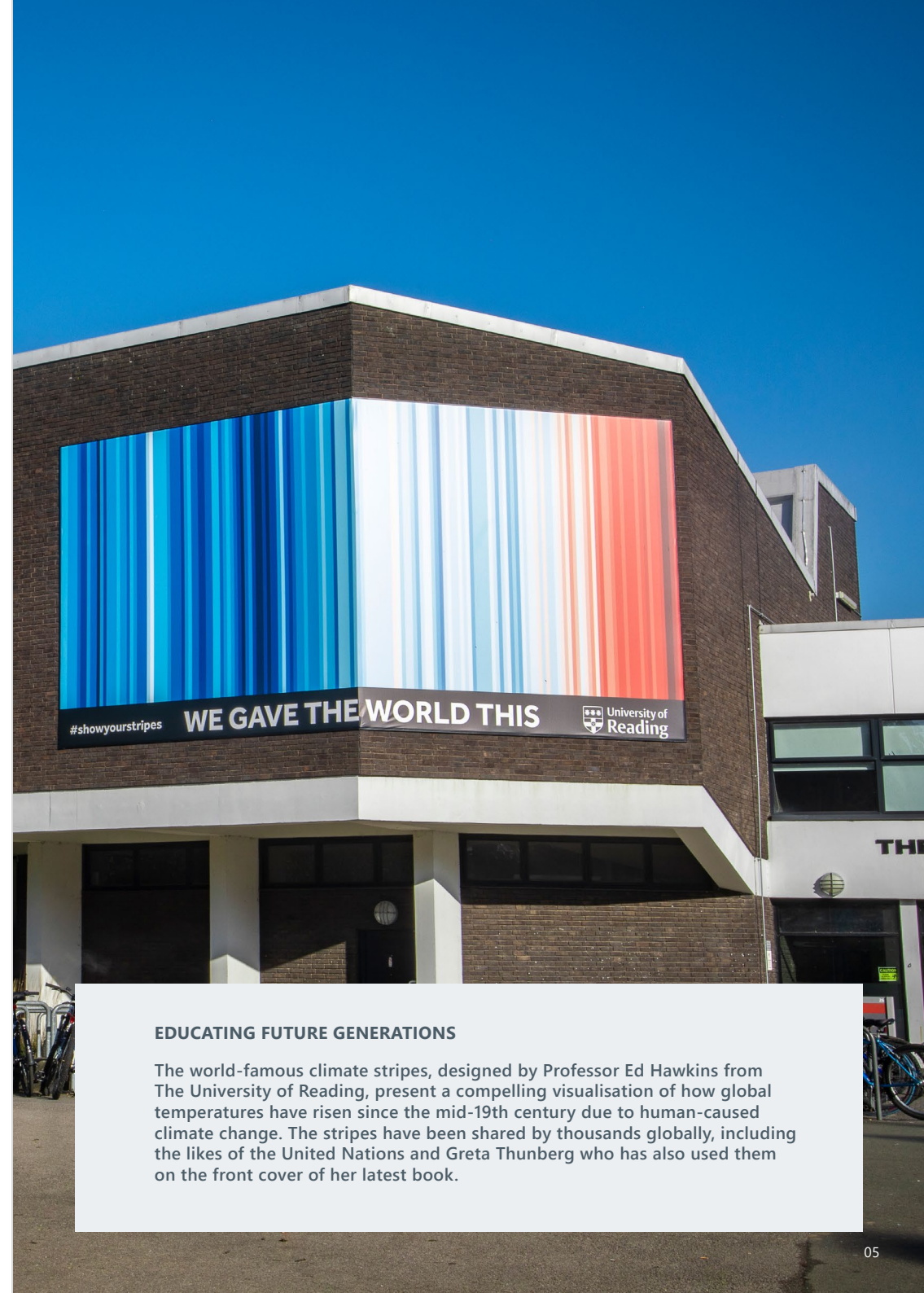
QS World University Rankings, 2024

TOP

**10**

of Universities ranked worldwide for **Impact on Climate Action**

THE Impact Rankings 2023



## EDUCATING FUTURE GENERATIONS

The world-famous climate stripes, designed by Professor Ed Hawkins from The University of Reading, present a compelling visualisation of how global temperatures have risen since the mid-19th century due to human-caused climate change. The stripes have been shared by thousands globally, including the likes of the United Nations and Greta Thunberg who has also used them on the front cover of her latest book.

# Schools and Departments Highlights



The University offers a wide range of programmes, from the pure and applied sciences to languages, humanities, social sciences, business and arts.

**12th** 

for Art and Design

Complete University Guide, 2024

**11th**

for Food Science

Complete University Guide, 2024

**1st** 

for Agriculture and Forestry

1st placed UK University for Agriculture and Forestry out of all institutions included in the QS World University Rankings by Subject, 2023

**10th**

in the UK for Business and Economics

10th highest placed UK University for Business and Economics out of all institutions included in the Times Higher Education World University Rankings 2024



**LLB Law**

is accredited by the Solicitors Regulation Authority and Bar Standards Board

Ranked

**3rd**

in the UK for Building

Complete University Guide 2024

TOP

**15**

in the UK for Marketing

Complete University Guide, 2024

**The School of Psychology and Clinical Language Sciences**

houses a world-renowned institute for evidence-based psychological treatments for children and young adults, and in-house NHS clinics offering psychological interventions and speech and language therapy

**6th**

in the UK for Graphic Design

Guardian University Guide, 2024

**3rd**

in the UK for research power in Earth Systems and Environmental Sciences

REF 2021

**100%**

of graduates are in work or further study within 15 months of the end of their course

Graduate Outcomes Survey 2020/21; includes undergraduate, postgraduate taught and postgraduate research responders from Film, Theatre and Television

**8th**

in the UK for research impact in Typography and Graphic Communication

REF 2021



# Henley Business School



Founded in 1945, Henley is one of the oldest business schools in the UK and is part of the University of Reading. It is widely recognised for its diversity and international reach with 150 academics from 18 countries and over 7,000 students from more than 140 countries.



UK  
**1st**  
for Land and Property Management

University of Reading (including Henley Business School) ranking, Complete University Guide 2024

**8th**  
for career after 15 months in Business and Management

University of Reading (including Henley Business School) ranking, Guardian UK University Guide 2024

## Industry connections

include BMW, British Airways, BT, Capita, Citi, Cushman Wakefield, Deloitte, Disney, EY, HSBC, KPMG, Microsoft, Oracle, Porsche, SAP and Savills



**Top 30**

in the UK for overall undergraduate subject of Accounting & Finance

University of Reading (including Henley Business School) ranking, Complete University Guide, 2024

Top  
**10**  
for Master's in Finance

Out of all UK business schools included in the Financial Times Global Masters in Finance experience, 2023

**Triple Accredited**



# Undergraduate degrees you could progress to

Students who successfully complete their **ONCAMPUS** programme, and meet the required entry criteria will have the opportunity to progress onto one of the following undergraduate degrees at the University of Reading:

**ONCAMPUS** Reading Undergraduate Foundation Programme pathways in Engineering, Humanities and Life Sciences are delivered from **ONCAMPUS** London.

## Art and Design pathway

**English Required** OCTOE - internal assessment: 65%

**Pass Mark** for progression academic modules: Dependent on degree, please see [oncampus.global](https://oncampus.global)

BA Art and Film	BA Film and Theatre
BA Art and History of Art	BA Fine Art (3 year programme)
BA Art and Philosophy	BA Graphic Communication
BA Art and Psychology	BA Theatre and Performance
BA Art and Theatre	
BA Film and Television	

## Business, Economics, Finance and Management pathway

**English Required** OCTOE - internal assessment: 65%

**Pass Mark** for progression academic modules: Dependent on degree, please see [oncampus.global](https://oncampus.global)

BA Accounting and Business Flying Start degree	BSc Business and Management (Data Analytics and Digital Business) with Placement Year
BA Accounting and Management	BSc Business and Management (Data Analytics and Digital Business) with Year Abroad
BA Accounting and Management with Placement Experience	BSc Business and Management (Entrepreneurship and Innovation)
BA Economics	BSc Business and Management (Entrepreneurship and Innovation) with Placement Year
BA Economics with Placement Year	BSc Business and Management (Entrepreneurship and Innovation) with Year Abroad
BA International Relations and Economics	BSc Business and Management (Human Resources and Organisational Behaviour)
BA International Relations and Economics with Placement Year	BSc Business and Management (Human Resources and Organisational Behaviour) with Placement Year
BA Politics and Economics	BSc Business and Management (Human Resources and Organisational Behaviour) with Year Abroad
BA Politics and Economics with Placement Year	BSc Business and Management (Marketing)
BSc Accounting and Finance	BSc Business and Management (Marketing) with Placement Year
BSc Accounting and Finance with Placement Experience	BSc Business and Management (Marketing) with Year Abroad
BSc Accounting and Finance with Year Abroad	BSc Business and Management with Placement Year
BSc Agricultural Business Management	BSc Business and Management with Year Abroad
BSc Agricultural Business Management with Placement Year	BSc Business Economics
BSc Business and Management	BSc Business Economics with Placement Year
BSc Business and Management (Accounting)	BSc Consumer Behaviour & Marketing
BSc Business and Management (Accounting) with Placement Year	
BSc Business and Management (Accounting) with Year Abroad	
BSc Business and Management (Data Analytics and Digital Business)	

BSc Consumer Behaviour & Marketing with Placement Year
BSc Economics
BSc Economics and Finance
BSc Economics with Placement Year
BSc Environmental Management and Sustainability
BSc Environmental Management and Sustainability with Placement Year
BSc Finance
BSc Finance (FinTech)
BSc Finance (FinTech) with Placement Year
BSc Finance (FinTech) with Year Abroad
BSc Finance (International Business)
BSc Finance (International Business) with Placement Year
BSc Finance (International Business) with Year Abroad
BSc Finance (Investments)
BSc Finance (Investments) with Placement Year
BSc Finance (Investments) with Year Abroad
BSc Finance (Sustainable Finance)
BSc Finance (Sustainable Finance) with Placement Year

For full progression details, please visit [oncampus.global](https://oncampus.global)



BSc Finance (Sustainable Finance) with Year Abroad
BSc Finance with Placement Year
BSc Finance with Year Abroad
BSc Food Business and Marketing
BSc Food Business and Marketing with Placement Year
BSc International Business and Management
BSc International Business and Management with Placement Year
BSc International Business and Management with Year Abroad
BSc International Business and Management with a Modern Language
BSc International Business and Management with a Modern Language with Placement Year
BSc International Business and Management with a Modern Language with Year Abroad
BSc International Development
BSc International Development with Placement Year
BSc Real Estate
BSc Real Estate Finance
BSc Real Estate with MSc Diploma in Urban Planning & Development

## Engineering and Physical Sciences pathway

**English Required** OCTOE - internal assessment: 65%

**Pass Mark** for progression academic modules: Dependent on degree, please see [oncampus.global](https://oncampus.global)

BSc Agriculture	BSc Food Technology with Bio Processing with Industrial Training
BSc Agriculture with Placement Year	BSc Nutrition
BEng Architectural Engineering	BSc Nutrition & Food Science
BEng Biomedical Engineering	BSc Nutrition & Food Science with Professional Training
BSc Building Surveying	BSc Nutrition with Professional Training
BSc Computer Science	BSc Quantity Surveying
BSc Computer Science with Industrial Year	MEng Architectural Engineering
BSc Construction Management	
BSc Construction Management and Surveying	
BSc Environmental Science	
BSc Environmental Science with Professional Experience	
BSc Food Science	
BSc Food Science with Industrial Training	
BSc Food Technology with Bio Processing	

### Medical and Life Sciences pathway

English Required OCTOE - internal assessment: 65%

Pass Mark for progression academic modules: Dependent on degree, please see [oncampus.global](https://www.oncampus.global)

BSc Biochemistry	BSc Microbiology with Professional Experience
BSc Biochemistry with Professional Experience	BSc Pharmaceutical Chemistry
BSc Biological Sciences	BSc Pharmaceutical Chemistry with a Year in Industry/Research
BSc Biological Sciences with Professional Experience	BSc Pharmacology
BSc Biomedical Sciences	BSc Pharmacology with a year in Industry
BSc Biomedical Sciences with Professional Experience	BSc Psychology
BSc Bioveterinary Sciences	BSc Psychology and Language Sciences
BSc Bioveterinary Sciences with Placement Year	BSc Psychology and Philosophy
BSc Chemistry	BSc Psychology with Neuroscience
BSc Chemistry with a year in Industry/Research	BSc Psychology with Professional Placement
BSc Chemistry with Cosmetic Science	BSc Zoology
BSc Chemistry with Cosmetic Science with a Year in Industry	BSc Zoology with Professional Experience
BSc Ecology and Wildlife Conservation	MChem Chemistry
BSc Ecology and Wildlife Conservation with Professional Experience	MChem Chemistry with a year in Industry/Research
BSc Medical Science	MPAS Physician Associate Studies
BSc Medical Science with Professional Experience	MPharm Pharmacy
BSc Microbiology	MSci Applied Psychology
	MSci Speech and Language Therapy

### Business and Economics pathway

English Required OCTOE - internal assessment: 65%

Pass Mark for progression academic modules: Dependent on degree, please see [oncampus.global](https://www.oncampus.global)

BA Primary Education with Maths

### All pathways

English Required OCTOE - internal assessment: 65%

Pass Mark for progression academic modules: Dependent on degree, please see [oncampus.global](https://www.oncampus.global)

BA Education Studies	BSc Geography (Human and Physical)
BA English Language and Linguistics	BSc Geography (Human and Physical) with Professional Experience
BA English Language and Linguistics with Placement Experience	BSc Geography (Human) with Professional Experience
BSc Architecture	BSc Geography (Physical)
BSc Geography and Economics (Regional Science)	BSc Geography (Physical) with Professional Experience
BSc Geography and Economics (Regional Science) with Professional Experience	
BSc Geography (Human)	

### Humanities and Social Sciences pathway

English Required OCTOE - internal assessment: 65%

Pass Mark for progression academic modules: Dependent on degree, please see [oncampus.global](https://www.oncampus.global)

BA Ancient History	BA Museum Studies and Archaeology with Professional Placement
BA Ancient History and Archaeology	BA Museum Studies and Archaeology with Study Year Abroad
BA Ancient History and Archaeology with Professional Placement	BA Philosophy
BA Ancient History and Archaeology with Study Year Abroad	BA Philosophy and Classical Studies
BA Archaeology	BA Philosophy and International Relations
BA Archaeology and Anthropology	BA Philosophy and Politics
BA Archaeology and Anthropology with Professional Placement	BA Philosophy, Business and Ethics
BA Archaeology and Anthropology with Study Year Abroad	BA Philosophy, Politics and Economics
BA Archaeology with Professional Placement	BA Politics and International Relations
BA Archaeology with Study Year Abroad	BA Politics and International Relations with Placement Year
BA Classical Studies	BA Primary Education (QTS)
BA Classics	BA Spanish and International Development
BSc Criminology	BA War, Peace and International Relations
BA Ethics, Value and Philosophy	BA War, Peace and International Relations with Placement Year
BA French and International Development	LLB Law
BA Italian and Classical Studies	
BA Modern Languages (3 year)	
BA Modern Languages (4 year)	
BA Modern Languages and Business	
BA Modern Languages and Economics	
BA Modern Languages and English Language	
BA Modern Languages and History	
BA Modern Languages and International Relations	
BA Museum and Classical Studies	
BA Museum Studies and Archaeology	



All **ONCAMPUS** Reading Undergraduate Foundation Programme pathways (excluding Art & Design and Business) are delivered from **ONCAMPUS** London. Please scan QR to visit our website for more details.

# Master's degrees you could progress to

Students who successfully complete their **ONCAMPUS** programme, and meet the required entry criteria will have the opportunity to progress onto one of the following postgraduate degrees at the University of Reading:

## Business pathway

English Required AELD - internal assessment: 65%

Pass Mark for progression academic modules: Dependent on degree, please see [oncampus.global](https://oncampus.global)

MSc Accounting, Financial Management and Digital Business	MSc International Human Resource Management
MSc Climate Change, Sustainable Business and Green Finance	MSc Investment Management
MSc Digital Business and Data Analytics	MSc Management
MSc Digital Innovation	MSc Marketing (International Marketing)
MSc Digital Marketing	MSc Marketing (Sustainable Marketing)
MSc Entrepreneurship and Innovation	
MSc Finance	
MSc Finance and Financial Technology (FinTech)	
MSc International Accounting and Finance	
MSc International Business	
MSc International Business and Finance	

## Economics pathway

English Required AELD - internal assessment: 65%

Pass Mark for progression academic modules: Dependent on degree, please see [oncampus.global](https://oncampus.global)

MSc Agricultural Economics	MSc Food Economics and Marketing
MSc Business Economics	MSc Public Policy
MSc Development Finance	
MSc Economics	

## Art and Design pathway

English Required AELD - internal assessment: 65%

Pass Mark for progression academic modules: Dependent on degree, please see [oncampus.global](https://oncampus.global)

MA Communication Design	MA Fine Art
MA Communication Design: Book Design Pathway	MA Film and Creative Enterprise
MA Communication Design: Graphic Design Pathway	
MA Communication Design: Information Design Pathway	
MA Communication Design: Typeface Design Pathway	

For full progression details, please visit [oncampus.global](https://oncampus.global)





# How ONCAMPUS Works

Our programmes at **ONCAMPUS** Reading are designed for international students who do not meet the requirements for direct entry to the University of Reading. We'll support you as you prepare for degree study at the University.

ONCAMPUS Reading Undergraduate Foundation Programme pathways in Engineering, Humanities and Life Sciences are delivered from **ONCAMPUS** London.



## Increase your English language level

- Academic writing skills
- Academic reading skills
- Presentation and discussion skills
- Listening and note-taking

## Improve academic grades and study skills

- Additional year of study equivalent to 13th year of UK study for undergraduate degree
- Demonstrate an academic level that meets university requirements
- Present higher grades in Pathway programme than achieved in high school for undergraduate entry
- Learn the study skills essential for success in UK universities
- Additional research study skills for master's students

## Expert university progression support

- Expert guidance on which degree to progress to
- One-to-one support sessions
- Faculty visits and meetings

## Progress to university degree

# Your route to a degree at the University of Reading

**ONCAMPUS** Reading offers students a guaranteed opportunity for progression onto undergraduate and master's degree programmes at the University of Reading.



About ONCAMPUS

## ONCAMPUS gives you...

### Outstanding teaching and support

Through every step of your journey with us, you will be supported by highly qualified teachers and support staff, both inside and outside the classroom.

Your personal tutor will meet with you regularly to ensure you are on track to pass the programme and progress to your chosen degree.

Your personal tutor is also there to help you with any issues you might have inside or outside the classroom.

### A proven track record of success

**ONCAMPUS** is part of Cambridge Education Group, one of the UK's leading university pathway providers since 1952.

Cambridge Education Group was the first private institution to offer university foundation programmes in the UK in 1985, and successfully prepares thousands of students for the UK's top universities every year.

### Part of the University from day one

The **ONCAMPUS** Reading centre is located at the heart of the London Road campus, close to all of the University's facilities.

Students studying at this campus will receive a University library card, enabling you to borrow books from the University's extensive collection and giving you access to the Library's excellent study spaces.

You will meet your course leader at the University before you start your degree and have the opportunity to try out some of the excellent facilities.



# Undergraduate Foundation Programme (UFP)

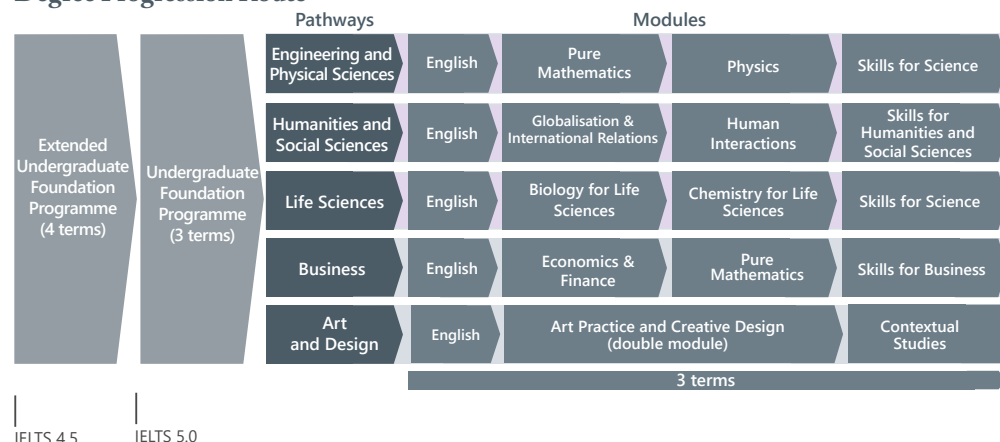
This programme provides a guaranteed opportunity for progression to Year 1 of a wide range of undergraduate degrees at the University of Reading.

ONCAMPUS Reading Undergraduate Foundation Programme pathways in Humanities & Social Sciences, Life Sciences and Engineering & Physical Sciences are delivered from ONCAMPUS London.



We will teach you **Academic skills** for your subject area to fully prepare you for university study

## Degree Progression Route



Pass mark for academic modules

English level required (OCTOE - internal assessment)

Dependent on progression degree. Please visit [www.oncampus.global](http://www.oncampus.global)

65%-85% dependent on progression degree. Please visit [www.oncampus.global](http://www.oncampus.global)

40% academic modules  
60% design module

65%-70% dependent on progression degree



IELTS 6.0

IELTS 7.0

## Entry criteria

### English level:

From **5.0 IELTS**

or equivalent, with no single element less than 4.5 for the three-term UFP.

An extended programme is available if you do not have the required English language level. This programme lasts four terms and includes an English language module (ELPP) followed by three terms of UFP.

### Academic requirements:

**11-12 years**

Successful completion of 11-12 years of schooling with good grades. Visit [www.oncampus.global](http://www.oncampus.global) for academic entry requirements.

### Guideline minimum age: 17+

Students under 18 are subject to a Guardianship arrangement and an Under 18 Supplement.

Students must be 18 at the start of the intended degree programme at the University of Reading.

Progression also subject to any further criteria for admission to the University of Reading set out in the University's Admissions Policy and available on the University's website.

### Dates and fees

Dates and fees	Number of terms	Tuition fee	Progressing to Undergraduate degree in
23 September 2024 - 08 June 2025	3	£20,190	September 2025
23 September 2024 - 08 August 2025	4	£26,920	September 2025
04 November 2024 - 08 August 2025	3.5	£23,555	September 2025
06 January 2025 - 08 August 2025	3	£20,190	September 2025

All programmes are subject to a £450 registration fee. 3.5 term programmes consist of English language during the first 0.5 term although some academic content may be included. For more details visit [www.oncampus.global/about-us](http://www.oncampus.global/about-us)

The start date of pathways running in September 2024 at ONCAMPUS London is 16th September 2024.

**Note:** Modules are subject to availability, and you will be guided on the best combination of academic modules for your intended degree when you arrive. For more information on module content, visit our website [www.oncampus.global](http://www.oncampus.global) Students may need to purchase additional specialist materials throughout the course.

# Pre-Master's Programme (PMP)

This programme is taught at level 5 and provides a guaranteed opportunity for progression to master's degrees in art, design, film and theatre or economics, public policy and development at the University of Reading and a number of business degrees at Henley Business School.

## Degree progression route



English language level | IELTS 5.0

## Entry criteria

**English level:** From **5.0 IELTS** or equivalent, with no single element less than 4.5

**Academic requirements:** Degree Bachelor's degree (with minimum 2:2) or equivalent from a recognised university. Please visit [oncampus.global](http://oncampus.global) for academic entry requirements

**Guideline minimum age:** 20+

An extended programme is available if you do not have the required English language level. This programme lasts three semesters and includes an English language module (ELPP) followed by two semesters of PMP.



Pass mark for academic and research modules

English level required (AELD - internal assessment)

60% in Research module  
40%-60% in all other academic modules depending on progression degree

65% overall with no element less than 50%

University of Reading  
master's degree

Henley Business School  
master's degree



Dates and fees	Number of semesters	Tuition fee	Progressing to master's degree starting in
23 September 2024 - 09 May 2025	2	£22,470	September 2025
23 September 2024 - 08 August 2025	3	£29,200	September 2025
04 November 2024 - 08 August 2025	2.5	£25,835	September 2025
13 January 2025 - 08 August 2025	2	£22,470	September 2025

All programmes are subject to a £450 registration fee. The 2.5 semester programmes consist of English language during the first 0.5 semester although some academic content may be included. For more information on module content, visit our website [www.oncampus.global](http://www.oncampus.global). Students may need to purchase additional specialist materials throughout the course.



"We focus on research project skills in our classes and our tutor is great. He's teaching us how to become independent learners, so I feel like I am really preparing the skills I will need for the Master's degree at Henley Business School."

Yu An, Taiwanese  
Studied PMP for Business at ONCAMPUS Reading

# Guide to Reading



The University of Reading provides a safe and beautiful environment in which to study, with a strong community atmosphere and everything you need on your doorstep. Off campus, there's even more waiting for you. The vibrant town centre boasts a huge variety of restaurants, parks and entertainment, with stunning English countryside close by.

## Reading Festival

is one of the best known in the UK, with more than 105,000 fans flocking to see some of the biggest names in music.



## 25 minutes

to London by train

Reading's new £850m mainline train station is just two miles away and provides direct rail and Overground (Elizabeth Line) links to London and many of the UK's other major cities.



## Wide variety of cultural attractions

including The Hexagon theatre, South Street Arts Centre and the University's Museum of English Rural Life.



More than **100**  restaurants within town centre

including Indian, Thai, Italian and many more...



Stunning green spaces to explore. The beautiful English countryside is perfect for walking, cycling and socialising.



**2** large shopping centres within the town centre

plus regular local markets and a wide range of high street and independent shops.


## SportsPark

Take part in a variety of activities including tennis, badminton, volleyball, basketball, cricket, squash, dance, yoga, football and hockey.



A fabulous multiplex cinema shows all the latest movies in Reading town centre.



Under **3** miles to  Select Car Leasing Stadium

Just 20 minutes by bus or 16 minutes to cycle to this huge sporting stadium from ONCAMPUS Reading.



## Cole Museum of Zoology

Only a three-minute walk from the students' union



# ONCAMPUS Reading CITY GUIDE PAGE



[oncampus.global/reading-city-guide](http://oncampus.global/reading-city-guide)

## DIGITAL MAP



Hexagon Theatre



The Oracle Shopping Centre



Vue Multiplex Cinema



Great Hall

My River Cruising

Broad Street Mall

Central Jamme Masjid

River Kennet

Waterloo Meadows

Christchurch Parish Office

Cintra Park

Humanities and Social Sciences Building

**ONCAMPUS**

Blandford Lodge

Library

Whiteknights campus

Hopkins Building

Reading University Students' Union



UNIVERSITY OF READING

Whiteknights House

Markaz Salafi

Museum Of English Rural Life

Unite Student Accommodation

Green Banks Building

Wycliffe Baptist Church

South Street Arts Centre

The Blade

Reading Museum & Town Hall

St James RC Church

Reading Train Station

ELIZABETH LINE

River Thames

Heathrow Airport  
27 miles

### Whiteknights campus

ONCAMPUS Reading is based on the main University campus. Set in 130 hectares of stunning parkland, Whiteknights campus offers plenty of places to eat, shop, study and socialise – everything you need is in one place.

It is home to the Library, Reading Students' Union, two on-site museums, shops, cafes, and other amenities such as 3sixty, a large venue that hosts a variety of student-led events. The campus also houses many teaching and research facilities, including modern, well-equipped study areas.

# Accommodation in Reading

ONCAMPUS aims to make sure that finding a place to live while you study with us is quick and easy. It is very important that you have a place to stay when you arrive in the UK, and while you can choose to organise your own accommodation, we strongly recommend that all students book a room through our free service.

We have two fantastic residences available for you to book in Reading, both offering good value for money. The details below indicate the types of facilities available and the price range you can expect from our accommodation options.



Short distance to  
**ONCAMPUS**



Wi-Fi  
Access



Laundry  
Room



TV/Games Room



Bike  
Storage



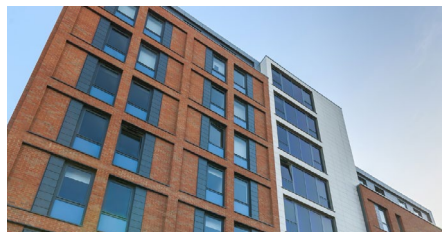
Study Room



24/7  
assistance  
and onsite  
service team



En-Suite  
Rooms

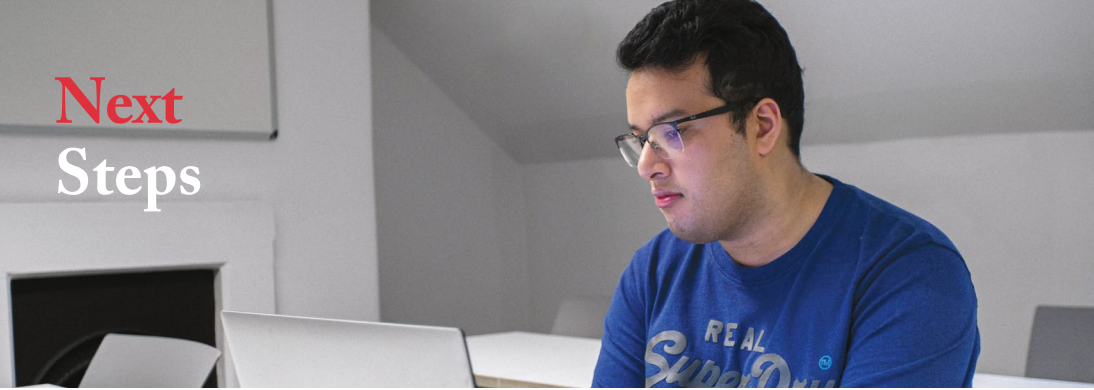


## + Facilities Include:

- Study spaces
- Vending machine
- Rooftop terraces
- TVs / Table football
- CCTV & secure access
- All utility bills included
- Wi-Fi
- On-Site management
- Secure cycle storage



# Next Steps



- 1** Submit your application by one of the following methods:
- Online: [www.oncampus.global](http://www.oncampus.global) Email: [admissions@oncampus.global](mailto:admissions@oncampus.global)



**Please remember to include all relevant documentation:**

- Academic transcripts (with official translations, if original is not in English)
- Evidence of English Language level
- Copy of passport
- Explanation of any study gaps
- Copies of any previous/current UK visas

Additional documentation may be required depending on the course. Our Admissions team will contact you should this be the case.



- 2** Our Central Admissions team will review your application.

We will send you an offer letter which will list any outstanding conditions. We will remove any conditions that have already been met.

If we think the course is not right for you, we will suggest an alternative.

If we have any queries about your application, we will contact you for further information.



- 3** To accept your place on the course, you will need to meet all the remaining conditions, including payment of the deposit/registration fee or proof of government sponsorship. We can only confirm your place once all conditions have been met. Although, once the deposit is paid, we will hold a place for you.

Please note that if you require a visa to study with us, you may need to provide additional evidence to comply with the visa regulations in the UK. These are the requirements of the government and not of ONCAMPUS. Your assistance in meeting these requirements is much appreciated.



- 4** Once you have paid your deposit and met all the conditions of offer, we will confirm your place and send you a Confirmation of Acceptance for Studies (CAS) or a Certificate of Enrolment (CoE) depending on the type of visa you require. If you need to obtain a visa, you will need to use your CAS/CoE to support your visa application. Please note a CAS can only be issued up to six months before the start of the course (if you apply from outside the UK) or up to three months (if you are eligible to apply from within the UK).



- 5** You will then need to apply for a visa if you require one to study in the UK. It is your responsibility to obtain a visa before you travel to join the course.

If you do not have a valid visa for studies in the UK, you will not be able to join the course. You are required to pay at least the 1st term's tuition fees before you begin your studies at ONCAMPUS. You should arrive on the weekend before the start date of the course. Please check your CAS or CoE for further details.



- 6** We will send you pre-arrival information.

The accommodation application form will be included in the pre-arrival information. You should complete the form, selecting your preferred option, and return it to ONCAMPUS Reading by email to [liveinreading@oncampus.global](mailto:liveinreading@oncampus.global). London Heathrow is the closest international airport to ONCAMPUS Reading. You can transfer to your accommodation by train, coach or taxi. Be advised that public transport is the cheapest option. Please refer to the pre-arrival information that we send you for more details.

Follow our latest news

- @oncampusglobal
- @oncampus\_global
- @oncampus\_uusa
- @oncampus.global
- @studentsofoncampus

**HEAD OFFICE**

Cambridge Education Group  
51-53 Hills Road, Cambridge,  
CB2 1NT, United Kingdom

Telephone: +44 (0)1223 345698

Email: [admissions@oncampus.global](mailto:admissions@oncampus.global)

Web: [www.oncampus.global](http://www.oncampus.global)

**CENTRE ADDRESS**

**ONCAMPUS** Reading  
Blandford Lodge (Building W010)  
Whiteknights Campus  
University of Reading  
Reading  
RG6 6DP

This brochure has been created by FoundationCampus Limited, trading as **ONCAMPUS**, a subsidiary company of Cambridge Education Group Limited, which is not part of the University of Reading.



[www.carbonbalancedprinter.com](http://www.carbonbalancedprinter.com)  
Healeys Print Group - Reg. 2108

Information in this brochure is correct at time of issue in January 2024. ONCAMPUS reserve the right to alter, reschedule or close courses which do not remain viable; students will be informed. Please check our website at [www.oncampus.global](http://www.oncampus.global) for updated information. Trade marks used under licence.