



www.oncampus.global/loughborough

**ONCAMPUS
LOUGHBOROUGH**

01055



2024-25

**ONCAMPUS
LOUGHBOROUGH**

ONCAMPUS LOUGHBOROUGH

ONCAMPUS is proud to work in partnership with Loughborough University to offer high-quality university preparation programmes for international students.

ONCAMPUS Loughborough is located in Loughborough on the University's East Midlands campus.

On successful completion of your foundation programme, you will have the opportunity for progression to some of the most highly-ranked and innovative degrees at this UK top 10* university.

*Complete University Guide 2017-2024



Loughborough is located in the heart of the East Midlands, close to Nottingham, Birmingham and Leicester. Loughborough benefits from fantastic transport links with Loughborough train station easily accessible from the University campus.

Leicester from 9 minutes
Nottingham from 19 minutes
Sheffield from 24 minutes
London from 77 minutes

Loughborough University is recognised as one of the UK's best green spaces



Green Flag Award since 2018

Contents

+ About Loughborough University	
University Highlights	04
Subject Highlights	06
Campuses and Facilities	08
Loughborough Campus Map	10
Progression Degrees	12
+ About ONCAMPUS	
How ONCAMPUS works	16
Your route to a degree	17
Our programmes:	
Undergraduate Foundation Programme (UFP)	18
Pre-Master's Programme (PMP)	20
+ About Student Life	
Guide to Loughborough	22
+ Accommodation	
Selecting your accommodation in Loughborough	24
+ Applying	
Next steps	26



University Highlights

Loughborough's achievements are far reaching. Consistently ranked as one of the top performing universities in the UK, Loughborough offers outstanding teaching, award-winning facilities and a true campus environment. Above all, Loughborough University is a welcoming place where students should feel they can be themselves.

Awarded Gold Overall, Gold for Student Experience and Gold for Student Outcomes

Teaching Excellence Framework 2023

Awarded **7 Queen's Anniversary Prizes**

Over 90% of Loughborough's research is 'world-leading' or 'internationally excellent'

Research Excellence Framework 2021

Ranked **2nd** for Job Prospects

Best UK Universities 2023, StudentCrowd

No.1 in the world for sports-related subjects



QS World University Rankings by Subject 2017-2023

University of the Year for Sport

Times and Sunday Times Good University Guide 2022

No.1 in the UK for employer-student connections and within the top 25 globally

QS Graduate Employability Rankings 2022

Consistently ranked **TOP 10** UK University

Complete University Guide 2017-2024

Top 10 in the UK for student satisfaction

National Student Survey 2023

1st for University Facilities

Whatuni Student Choice Awards 2023

Top 10

in the UK for Student Experience

Times and Sunday Times Good University Guide 2024



Subject Highlights

Loughborough University holds an array of awards and accolades across its schools and academic departments at subject level.

Business and Management

TOP 10
in the UK for
**Business and
Management**



Guardian League Table 2024

TOP 15
in the UK for
Economics



Times and Sunday Times
Good University Guide 2024

Loughborough works with over 2,000 organisations worldwide to ensure teaching is informed by the latest best practice and research insights.

88%
in graduate employment
or higher level study

Graduate Outcomes Survey,
2020/21 graduates
(FT UK and Channel Isles, first
degree students)

TOP 20
in the UK for
Accounting and Finance

Times and Sunday Times
Good University Guide 2024

All business courses are four-year degrees with a built-in 'placement year' in year three.



Engineering and Physical Science

TOP 10
in the UK for
**Mechanical
Engineering**



Guardian University
Guide 2024

5th
in the UK for student
experience in **Electrical
& Electronic Engineering**

Times and Sunday Times Good
University Guide 2024

Loughborough holds an annual **Engineering/STEM Placement and Graduate Careers Fair**, which sees over 70 external companies attend.

TOP 10
in the UK for
**Chemical
Engineering**



Guardian University
Guide 2024

TOP 5
in the UK for
**graduate prospects in
Chemical Engineering**

The Guardian University
Guide 2024

Chemical Engineering facilities include **£25 million investment** into S-Building, with state-of-the-art pilot engineering facilities, a new 87-seater IT laboratory and the 'Igloo', a virtual-reality learning facility unique to Loughborough University.

Art and Design

1st
in the UK for
Fashion and Textiles



Guardian League
Table 2024

3rd
in the UK for
Art and Design



Times and Sunday Times
Good University Guide 2024

Facilities include state-of-the-art creative hubs that provide industry-standard production possibilities and facilitate a high level of professional training.

Recent placement destinations of Creative Arts students include **Mondelez, The Walt Disney Company, H&M, Suzie Turner, Dr. Martens, The MTC, Nacho Carbonell, Debenhams** and more.



Opportunities to work on real-life industry project briefs or to partake in renowned competitions.

These include: Creative Digital Technologies and Photography; Print, Dye, Weave, Stitch and Digital Embroidery; Wood, Metal, Plastics, Laser, and 3D Printing; Painting and Printmaking; and Ceramics and Mouldmaking.

Humanities

Student placements include **BP, Volkswagen, Molson Coors, IBM, Johnson & Johnson, Samsung Electronics, Bosch, Confederation of British Industry, PwC.**



1st
in the UK for
**Communication and
Media Studies**

Complete University Guide 2024

3rd
in the UK for
Media and Film Studies



Guardian League Table 2024

2nd
in the UK for
**Research Quality in
Communication and
Media Studies**

Complete University Guide 2024

Top 20
in the UK for
History

Complete University
Guide 2024

Life Science

TOP 20
in the UK for
Biosciences

Times and Sunday Times
Good University Guide 2024

TOP 15
in the UK for
Biological Sciences

Complete University Guide 2024

You'll have access to a **£17M STEMLab facility, also available during your time at ONCAMPUS.**



Campuses and Facilities

Loughborough has two outstanding campuses, one in Loughborough and the other, a postgraduate campus, in Here East, based at the Queen Elizabeth Olympic Park in London.

The University campuses offer world-class facilities for every aspect of university life. On progression from **ONCAMPUS** students joining Loughborough will benefit from access to all facilities on offer.



Loughborough campus

Teaching and learning

Pilkington Library

The four-storey University Library is the largest open access study space on campus, featuring an extensive collection of books, journals, specialist databases and online resources.

Students can benefit from 24/7 opening hours during key revision and exam periods, as well as 1,300 study spaces, 250 desktop computers, an in-house PC clinic and a cafeteria.

4th Best University for Campus and Facilities

Best UK Universities 2023, StudentCrowd



STEMLab

STEMLab is a £17 million investment containing the most advanced laboratories, workshops and teaching spaces for science and engineering students. Opened in 2017, the 3,500m² STEMLab building forms part of a wider £25 million investment set to transform the University's west side of campus.



1st

for University Facilities

Whatuni Student Choice Awards 2023



Sport

50m swimming pool

With its international standard diving blocks, timing systems and scoreboard, the Olympic-sized swimming pool has been hand-selected to be the training base for world-leading swimmers. It is also the location of the British Swimming National Centre, Loughborough Swimming and the British Triathlon Performance Centre.

£350 million has been invested in the estate over the last ten years (June 2020)

Powerbase Gym

There are two gyms available on campus, Powerbase Gym and Holywell Fitness Centre. Powerbase is one of the country's largest strength and conditioning gyms and is used by Olympic and Paralympic athletes. Open to staff and students, Powerbase holds an impressive number of free weights, weightlifting platforms and equipment designed to maximise performance and achieve personal goals. There is also a dedicated cardio floor containing exercise bikes, watt bikes, treadmills and rowing machines.

Athletics Centre

Loughborough's athletics offering includes the Seb Coe High Performance Athletics Centre, Paula Radcliffe Athletics Track and Steve Backley National Throws Centre. This trio of iconic names represents the class that students can expect from the track and field facilities.

Elite Athlete Centre

The Elite Athlete Centre and Hotel is the first and only one of its kind in the UK, offering 20 special altitude-controlled bedrooms that can take athletes from sea level to 5,000m (Everest base camp) in approx. 240 minutes. This fully accessible venue comes complete with a restaurant and café serving carefully balanced dishes prepared by expert nutritionists and chefs.

London campus

Loughborough University London is part of an exciting community of organisations, creatives and educational providers located inside Here East, based on Queen Elizabeth Olympic Park. The unique East London location provides a stimulating environment for postgraduate students to challenge ideas and collaborate with a wide range of inspiring industry partners. You could choose to study at the London campus upon successful completion of the Pre-Master's Programme or your undergraduate studies at Loughborough.



Awarded

5 Stars
for facilities

International QS Stars Scheme 2023

Loughborough Campus

SCAN HERE FOR
DIGITAL MAP



MAIN ENTRANCE



50M SWIMMING POOL



STUDENT
ACCOMMODATION



THE NATIONAL CRICKET
PERFORMANCE CENTRE



LOUGHBOROUGH
STUDENTS' UNION



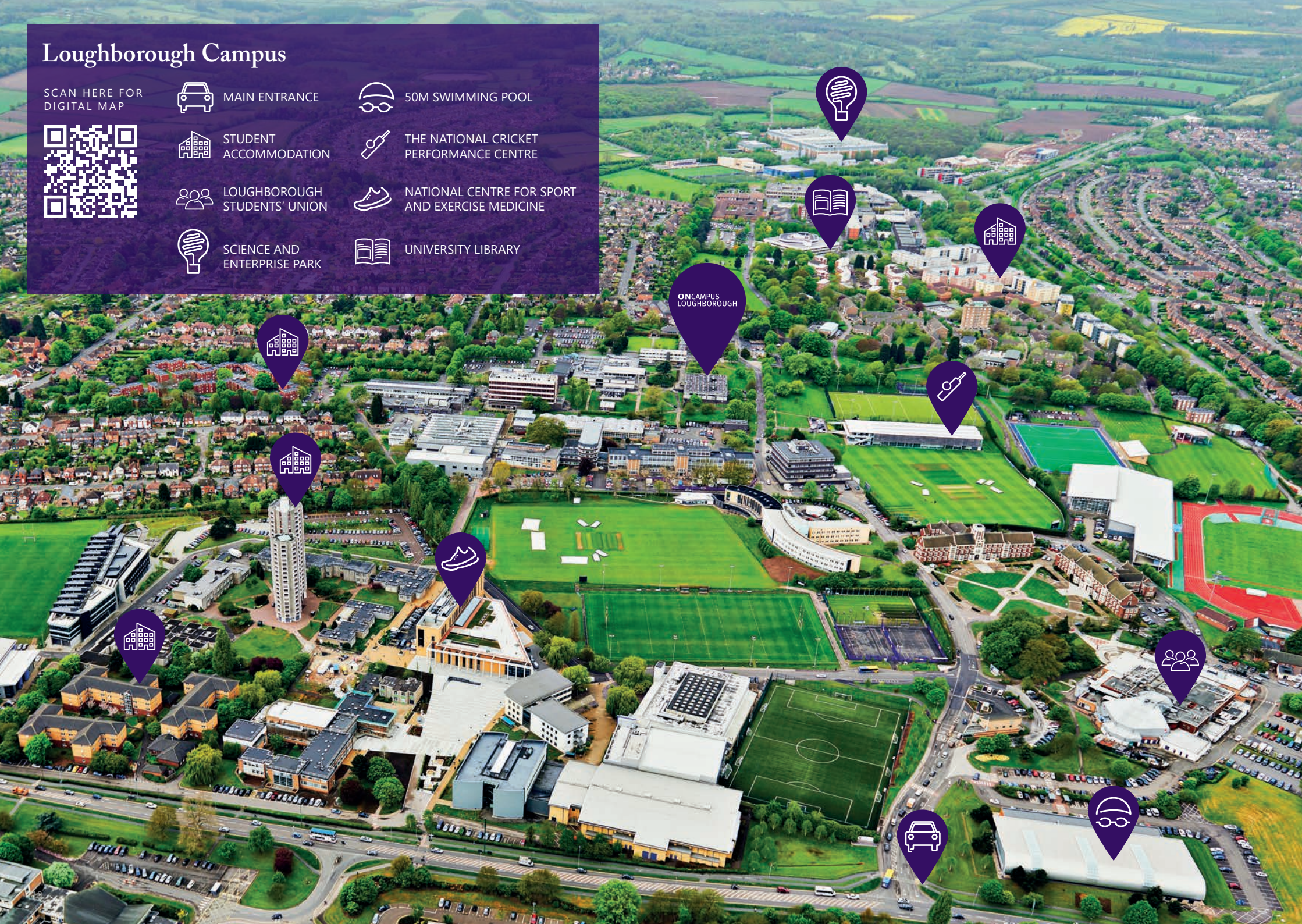
NATIONAL CENTRE FOR SPORT
AND EXERCISE MEDICINE



SCIENCE AND
ENTERPRISE PARK



UNIVERSITY LIBRARY



ON CAMPUS
LOUGHBOROUGH

Undergraduate degrees you can progress to

Engineering and Physical Sciences pathway

Pass Mark for progression: 60% average in academic modules unless specified below

English Required IELTS equivalent: 6.5, no component lower than 6.0.

BEng* Aeronautical Engineering 60% in Pure Maths module	BSc* Information Technology Management for Business
BEng* Architectural Engineering 60% in Pure Maths module	BEng* Materials Science and Engineering
BEng* Automotive Engineering 60% in Pure Maths module	BSc* Mathematics 70% in Pure Maths module
BEng* Automotive Materials	BSc Mathematics and Accounting and Financial Management 70% in Pure Maths module
BEng* Bioengineering 60% in Pure Maths module	BSc Mathematics and Physics 70% in Pure Maths module
BEng* Biomaterials Engineering	BSc Mathematics and Sport Science 70% in Pure Maths module
BEng* Chemical Engineering 60% in Pure Maths module	BSc Mathematics with Economics 70% in Pure Maths module
BSc* Chemistry	BSc Mathematics with Statistics 70% in Pure Maths module
BSc* Chemistry with Computing	BEng* Mechanical Engineering 60% in Pure Maths module
BEng* Civil Engineering 60% in Pure Maths module	BSc* Medicinal and Pharmaceutical Chemistry
BSc Commercial Management and Quantity Surveying	BSc* Natural Sciences 60% in Pure Maths module for Maths pathway
BSc* Computer Science 60% in Pure Maths module	BSc* Physics 60% in Pure Maths module
BSc* Computer Science and Artificial Intelligence 60% in Pure Maths module	BSc* Physics with Computing 60% in Pure Maths module
BSc* Computer Science and Mathematics 70% in Pure Maths module	BSc* Physics with Theoretical Physics 60% in Pure Maths module
BSc* Computing and Management	BEng* Product Design Engineering 60% in Pure Maths module
BSc Construction Engineering Management	BEng* Robotics, Mechatronics, and Control Engineering 60% in Pure Maths module
BEng* Electronic and Electrical Engineering 60% in Pure Maths module	BEng* Sports Technology
BEng Engineering Management 60% in Pure Maths module	BSc* Urban Planning
BSc* Engineering Physics 60% in Pure Maths module	
BSc Financial Mathematics 70% in Pure Maths module	
BA/BSc Geography	
BSc Geography and Management	
BSc Geography and Sport Science	
BSc Geography with Economics	

*Undergraduate Master's degrees (e.g. MEng, MSci) are also available. Progression to some degrees may be achieved via multiple pathways. Please visit www.oncampus.global for more details

Business, Economics, Finance and Management pathway

Pass Mark for progression: 60% average in academic modules.

English Required IELTS equivalent: 6.5, no component lower than 6.0.

BSc Accounting and Financial Management	BSc Finance and Management
BSc Business Analytics	BSc International Business
BSc Business Economics and Finance	BSc Management
BSc Economics	BSc Marketing and Management
BSc Economics and Management	BSc Sport Management

Humanities and Social Sciences pathway

Pass Mark for progression: 60% average in academic modules.

English Required IELTS equivalent: 6.5, no component lower than 6.0.

BSc Criminology	BA History and Politics
BSc Criminology and Sociology	BA International Relations
BA English	BA Liberal Arts
BA English and Sport Science	BSc Media and Communication
BA English Literature	BA Politics
BA English with Business Studies	BA Politics and International Relations
BA English with Creative Writing	BA Politics, Philosophy and Economics
BA History	BSc Sociology
BA History and International Relations	

Life Sciences pathway

Pass Mark for progression: 60% average in academic modules.

English Required IELTS equivalent: 6.5, no component lower than 6.0.

BSc Biological Sciences*	BSc Psychology with Criminology
BSc Human Biology	BSc Sport and Exercise Psychology
BSc Psychology	BSc Sport and Exercise Science
BSc Psychology in Education	BSc Sport Science, Coaching and Physical Education

Art and Design pathway

Pass Mark for progression: 60% average in academic modules.

English Required IELTS equivalent: 6.5, no component lower than 6.0.

BArch Architecture ²	BA Graphic Design
BA Design	BA Industrial Design
BA Fashion Design and Technology	BSc Product Design and Technology ² 60% in Pure Maths module
BA Fine Art	BA Textile Design
Progression to all Art and Design degrees requires portfolio review	

²Students will study two Art and Design modules plus Pure Maths

*Undergraduate Master's degrees (e.g. MEng, MSci) are also available. Progression to some degrees may be achieved via multiple pathways. Please visit www.oncampus.global for more details

Master's degrees you can progress to

All Master's degrees listed below can be studied at the Loughborough campus. For further information on degrees available at the London campus please visit www.oncampus.global/loughborough

Pre-Master's Programme - Level 6

Pass Mark for progression: 55% average in academic modules unless specified below

English Required IELTS equivalent: 6.5, no component lower than 6.0.

MSc Advanced Chemical Engineering 50% in academic modules	MSc Construction Project Management with Building Information Modelling
MSc Advanced Chemical Engineering with IT and Management 50% in academic modules	MA Contemporary Literature and Culture
MSc Advanced Computer Science 50% in academic modules	MA Creative Writing and the Writing Industries
MSc Advanced Manufacturing Engineering and Management 60% in academic modules	MSc Cyber Security and Data Analytics*
MSc Advanced Materials Science and Engineering 50% in academic modules	MSc Data Driven Design*
MSc Advanced Physics 50% in academic modules	MSc Data Science 50% in academic modules
MSc Analytical and Pharmaceutical Science 50% in academic modules	MA Design and Branding*
MSc Analytical Chemistry 50% in academic modules	MSc/MA Design Innovation*
MSc Artificial Intelligence 50% in academic modules	MSc Design Innovation Management*
MSc Artificial Intelligence and Data Analytics*	MSc Digital Creative Media*
MSc Automotive Engineering 60% in academic modules	MSc Digital Entrepreneurship*
MSc Biomedical Engineering 50% in academic modules	MSc Digital Finance*
MSc Biotechnology 50% in academic modules	MSc Digital Innovation Management*
MBA Business Administration	MSc Digital Marketing*
MBA Business Administration with Internship	MA Digital Media and Creative Industries*
MSc Business Analytics	MA Digital Media and Society
MSc Business Psychology	MSc Diplomacy and International Relations* 50% in academic modules
MSc Civil Engineering	MSc Diplomacy, International Business and Trade* 50% in academic modules
MA Climate Change Politics and Policy	MSc Diplomacy, International Politics and Trade* 50% in academic modules
MSc Climate Change Science and Management	MSc Diplomacy and Sport*
MSc Clinical Exercise Physiology 60% in academic modules	MSc Economics and Finance
MA Communication, Media and Development*	MSc Engineering Design 60% in academic modules
MSc Construction Management 50% in academic modules	MSc Entrepreneurship and Innovation*
MSc Construction Project Management 55% in academic modules	MSc Entrepreneurship and Innovation Management*
	MSc Entrepreneurship, Finance and Innovation*
	MSc Environmental Monitoring, Research and Management

Pre-Master's Programme - Level 6

Pass Mark for progression: 55% average in academic modules unless specified below

English Required IELTS equivalent: 6.5, no component lower than 6.0.

MSc Ergonomics and Human Factors 60% in academic modules	MSc Social Science Research (Business and Management Studies)
MSc Finance	MSc Social Science Research (Communication and Media) 60% in academic modules
MSc Finance and Management	MA Social Science Research (Social Policy) 60% in academic modules
MSc Financial Mathematics 60% in academic modules	MSc Social Science Research (Sport and Exercise Science) 60% in academic modules
MA Global Communication and Social Change*	MSc Sport Analytics and Technologies* 60% in academic modules
MSc Human Resource Management	MSc Sport and Exercise Psychology 60% in academic modules
MSc Industrial Mathematical Modelling 60% in academic modules	MSc Sport Biomechanics 60% in academic modules
MSc Information Systems and Digital Innovation	MSc Sport Business and Innovation* 60% in academic modules
MSc International Business	MSc Sport Business and Leadership* 60% in academic modules
MA International Development*	MSc Sport Management 60% in academic modules
MSc International Financial and Political Relations	MSc Sport Management, Politics and International Development 60% in academic modules
MSc International Management*	MSc Sport Marketing* 60% in academic modules
MSc International Management and Emerging Economies*	MSc Sports Engineering 60% in academic modules
MSc International Project Management* 60% in academic modules	MA Storytelling 60% in academic modules
MA International Security	MA Strategic Communication 55% in academic modules
MSc International Sustainable Development*	MSc Strength and Conditioning 60% in academic modules
MA Leadership in Sport*	MSc Sustainable Management*
MSc Low Energy Building Services Engineering	MSc Sustainable Sport Business* 60% in academic modules
MSc Management	MSc Systems Engineering 60% in academic modules
MSc Marketing	MA Theatre 60% in academic modules
MSc Mechanical Engineering 60% in academic modules	MSc Work Psychology
MSc Musculoskeletal Sport Science and Health 60% in academic modules	
MSc Pharmaceutical Science and Medicinal Chemistry 50% in academic modules	
MSc Physics of Materials 50% in academic modules	
MSc Physiology and Nutrition of Sport and Exercise 65% in academic modules	
MSc Polymer Science and Engineering 50% in academic modules	
MSc Renewable Energy Systems Technology 60% in academic modules	
MSc Risk, Governance and International Management*	
MSc Security, Peace-building and Diplomacy* 50% in academic modules	
MSc Service Design Innovation*	

*Progressions only available at the Loughborough London campus.

Visit www.oncampus.global for more details on progression degrees and entry criteria.

How ONCAMPUS Works

Our programmes at ONCAMPUS Loughborough are designed for international students who do not meet the requirements for direct entry to study at Loughborough University. You will benefit from the support we offer in preparing you to progress to the University.



Increase your English language level

- Academic writing skills
- Academic reading skills
- Presentation and discussion skills
- Listening and note taking

Improve academic grades and study skills for undergraduate study

- Additional year of study to prepare for a UK undergraduate degree
- Demonstrate academic level to meet university requirements
- Learn the study skills essential for success in UK universities
- Additional research study skills for master's students

Expert university progression support

- Expert guidance on which degree to progress to
- One-to-one support sessions
- Visits to academic schools and departments

Progress to a university degree

ONCAMPUS gives you...

Outstanding teaching and support

Through every step of your journey with us, you will be supported by highly qualified teachers and support staff, both inside and outside the classroom.

Your personal tutor will meet with you regularly to ensure you are on track to pass the programme and progress to your chosen degree.

Your personal tutor is also there to help you with any issues you might have inside or outside the classroom.

A proven track record of success

ONCAMPUS is part of Cambridge Education Group, one of the UK's leading university pathway providers since 1952.

Cambridge Education Group was the first private institution to offer university foundation programmes in the UK in 1985, and successfully prepares thousands of students for the UK's top universities every year.

Part of the University from day one

The ONCAMPUS centre is located at the heart of the University close to all of its facilities, many of which you will have access to while you study your ONCAMPUS programme.

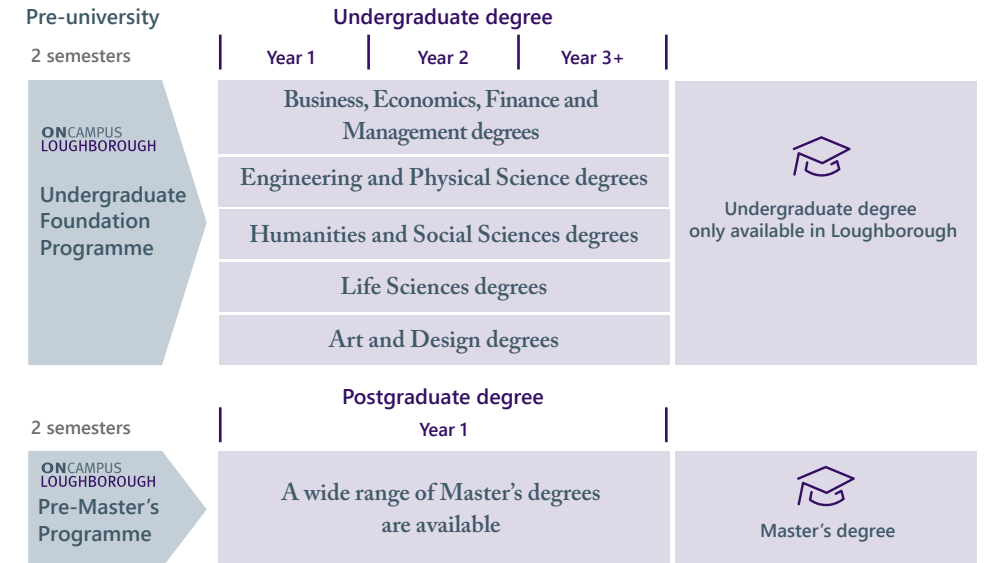
You will meet your course leader at the University before you start your degree and have the opportunity to try out some of Loughborough's excellent facilities.



Your route to a degree at Loughborough University

ONCAMPUS Loughborough offers guaranteed progression* to a wide range of undergraduate and postgraduate degrees at Loughborough University, on successful completion of our Foundation programmes.

*Subject to meeting the specified criteria

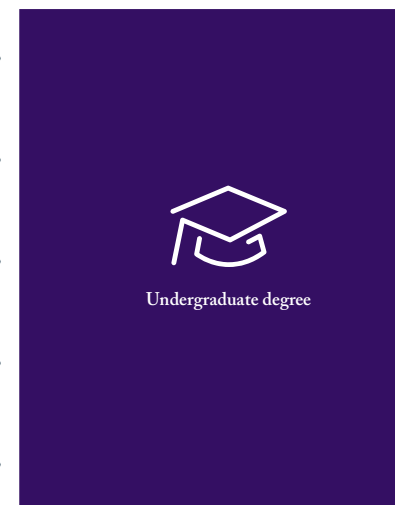


Undergraduate Foundation Programme (UFP)

This programme gives guaranteed progression¹ to Year 1 of a wide range of undergraduate degrees.

Undergraduate progression route

		Pathways	Modules				Pass mark for progression from academic modules	English level required (IELTS equivalent) for progression
Extended Undergraduate Foundation Programme (3 Semesters)	Undergraduate Foundation Programme (2 semesters)	Business, Economics, Finance & Management	Advanced Mathematics for Business and Finance or Business Behaviours*	Economics and Finance	Skills for Business	English	60%	6.5 with no element below 6
		Engineering & Physical Sciences	Pure Mathematics	Physics or Chemistry*	Skills for Science	English	from 60% ²	6.5 with no element below 6
		Humanities & Social Sciences	Globalisation and International Relations	Human Interactions	Skills for Humanities and Social Sciences	English	60%	6.5 with no element below 6
		Life Sciences	Biology for Life Sciences	Chemistry for Life Sciences	Skills for Life Sciences	English	from 60% ²	6.5 with no element below 6
		Art & Design	Art Practice and Creative Design (double weighted module)	Contextual Studies	English	from 60% ²	6.5 with no element below 6	
		2 semesters						



From IELTS 6.5

About ONCAMPUS

Entry Criteria

English level: From **5.0 IELTS** or equivalent, with no single element less than 5.0 for 2 semester UFP.

Academic requirements: **11-12 years**
Successful completion of 11-12 years of schooling with good grades. Please see www.oncampus.global for country-specific academic entry requirements.

Guideline minimum age: **17**
Must be 18 at the start of the intended degree programme.

¹ Subject to achieving the pass mark for progression, detailed above.

² Some degrees have higher or additional progression criteria. Please see page 12-13 for specific details.

*Module choice is dependent on progression degree. For further details visit www.oncampus.global
For progression degrees see pages 12-13.

Dates	Number of semesters	Business, Humanities, Life Sciences and Art & Design tuition fee	Engineering & Physical Science tuition fee	Progressing to undergraduate degree starting in
23 September 2024 - 20 June 2025	2	£23,370	£27,180	September 2025
03 February 2025 - 29 August 2025	2	£23,370	£27,180	September 2025

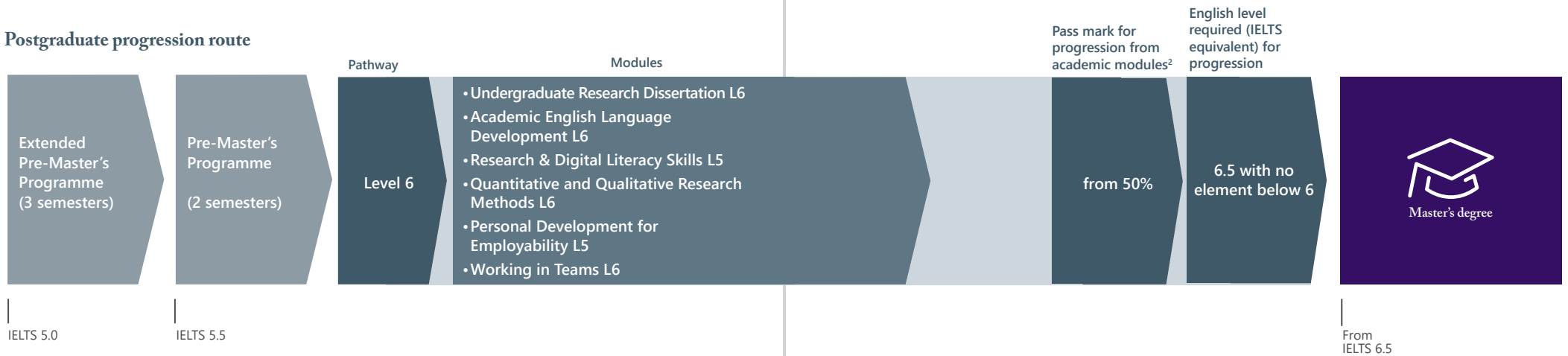
All programmes are subject to a £450 registration fee.

Note: Modules are subject to availability and you will be guided onto the best combination of academic modules for your intended degree when you arrive at ONCAMPUS Loughborough. For more information on module content, visit our website www.oncampus.global.

Pre-Master's Programme (PMP)

The Level 6 Pre-Master's Programme offers guaranteed progression¹ to a wide range of master's degrees at Loughborough University and Loughborough University London.

Postgraduate progression route



About ONCAMPUS

Entry Criteria

English level: From **5.5 IELTS** or equivalent, with no single element less than 5.5 for 2 semesters.

Academic requirements: **Degree** Successful completion of a Bachelor's degree or equivalent from a recognised university.

Guideline minimum age: 21+

¹ Subject to achieving the pass mark for progression and specified entry criteria.

² Some degrees require additional criteria and/or a higher pass mark as indicated on the degree list on pages 14-15.

Dates	Number of semesters	Tuition fee	Progressing to Master's degree starting in
23 September 2024 - 20 June 2025	2	£27,180	September 2025
03 February 2025 - 29 August 2025	2	£27,180	September 2025

All programmes are subject to a £450 registration fee..

Note: Modules are subject to availability and you will be guided onto the best combination of academic modules for your intended degree when you arrive at **ONCAMPUS** Loughborough. For more information on module content, visit our website www.oncampus.global.

Guide to Loughborough



Loughborough is a market town in the heart of the East Midlands, situated between Leicester and Nottingham and only a 77-minute train ride away from London. With great transport links, Loughborough offers easy access to surrounding cities.

The town is a 15-minute stroll from campus and offers a wide range of amenities including cinemas, restaurants, dessert parlours and retail stores.



Street market

Granted Royal Charter in 1221, this twice-weekly market fills the historic Market Place with over 100 stalls offering everything from food and beverages, to clothes and household items, and is a real must-visit in Loughborough.

Comedy Nights

Loughborough town hosts a regular programme of live performances and comedy evenings for you to enjoy with friends.



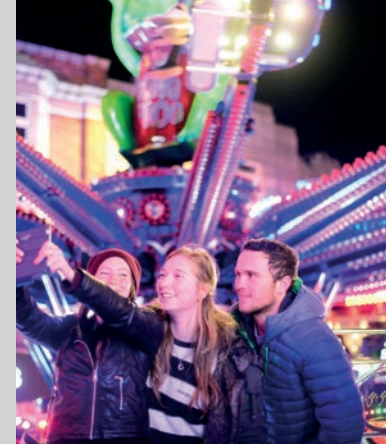
Queen's Park Loughborough

Queen's Park is a much loved local park, which has achieved a Green Flag award every year since 2008. Host to an array of bands in the summer, this beautiful green space was first opened in June 1899 to celebrate Queen Victoria's Diamond Jubilee.



Loughborough Fair

Every November for over 800 years this much loved fair comes to town offering rides, games, attractions and a multitude of stalls.



A few miles from Loughborough is the setting for David Attenborough's childhood adventures, **Charnwood Forest**. Offering a unique landscape of dormant volcanoes, fossils, amazing wildlife and the highest view point of Loughborough.



Bloom Awards

Loughborough has won Gold in the East Midlands in Bloom awards twelve times and the town was recently awarded £17 million in Government funding to make it even more special.



Cities

The bustling cities of Leicester (9 minutes by train) and Nottingham (19 minutes by train) offer a multitude of attractions, must-sees and shopping opportunities.



The National Space Centre

Built in 2001, the National Space Centre is a museum and educational centre full of rockets, exhibitions, galleries, and the UK's largest planetarium.



Golden Mile

Leicester is famous for its restaurants and shops, and you can find tons of places to buy authentic food, spices, clothing and other goods along the Golden Mile.

Accommodation in Loughborough

ONCAMPUS aims to make sure that finding a place to live while you study with us is quick and easy. It is very important that you have a place to stay when you arrive in the UK and we strongly recommend that all students book a room through Loughborough's accommodation services.

Booking this way ensures that you will have a safe, comfortable environment and be housed on Loughborough University's campus with other **ONCAMPUS** students, which is a great opportunity to make friends!



+ Facilities Include:

Communal spaces

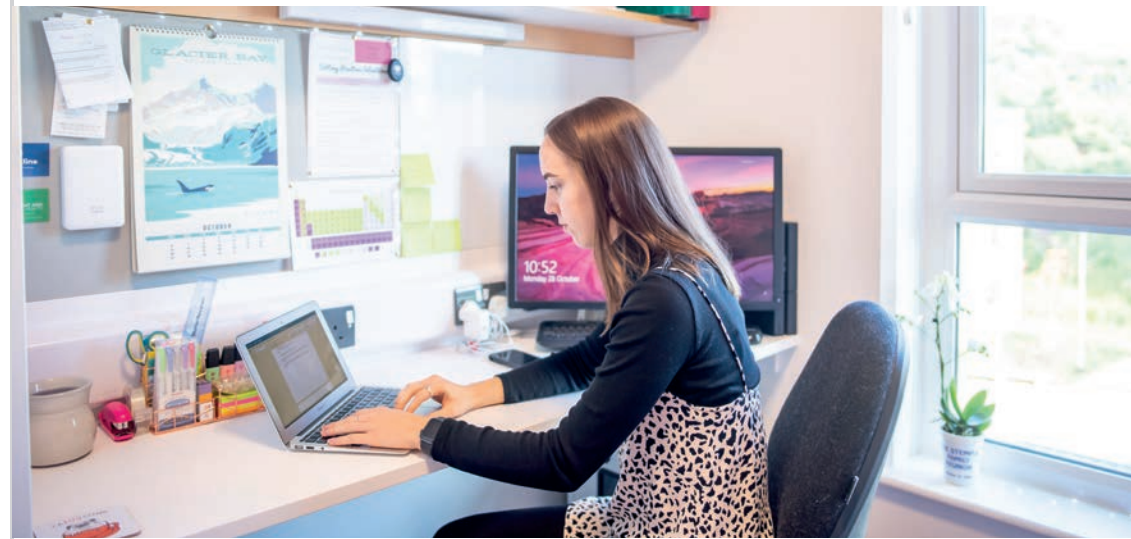
Games room

Communal study spaces

Laundry facilities

Bike storage

Catered and self-catered options



Next Steps



1 Submit your application by one of the following methods:

- Online: www.oncampus.global
- Email: admissions@oncampus.global

Please remember to include all relevant documentation:

- Academic transcripts (with official translations, if original is not in English)
- Evidence of English Language level
- Copy of passport
- Explanation of any study gaps
- Copies of any previous/current UK visas

Additional documentation may be required depending on the course. Our Admissions team will contact you should this be the case.



2 Our Central Admissions team will review your application.

We will send you an offer letter that will list any outstanding conditions. We will remove any conditions that have already been met.

If we think the course is not right for you, we will suggest an alternative.

If we have any queries about your application, we will contact you for further information.



3 To accept your place on the course you will need to meet all the remaining conditions, including payment of the deposit/registration fee or proof of government sponsorship. We can only confirm your place once all conditions have been met, although once the deposit is paid we will hold a place for you.

Please note that if you require a visa to study with us, you may need to provide additional evidence to comply with the visa regulations in the UK. These are the requirements of the government and not of ONCAMPUS. Your assistance in meeting these requirements is much appreciated.



4 Once you have paid your deposit and met all the conditions of offer, we will confirm your place and send you a Confirmation of Acceptance for Studies (CAS) or a Certificate of Enrolment (CoE) depending on the type of visa you require. If you need to obtain a visa, you will need to use your CAS/CoE to support your visa application. Please note, a CAS can only be issued up to six months before the start of the course (if you apply from outside the UK) or up to three months (if you are eligible to apply from within the UK).



5 You will then need to apply for a visa if you require one to study in the UK. It is your responsibility to obtain a visa before you travel to join the course.

If you do not have a valid visa for studies in the UK, you will not be able to join the course. You are required to pay at least the first term's tuition fees before you begin your studies at ONCAMPUS. You should arrive on the weekend before the start date of the course; please check your CAS or CoE for further details.



6 We will send you pre-arrival information.

The accommodation application form will be included in the pre-arrival information. You should complete the form, selecting your preferred option, and return it to ONCAMPUS Loughborough by email to liveinLoughborough@oncampus.global. East Midlands Airport is the closest international airport to ONCAMPUS Loughborough. There are various routes that you can take from the airport by train, bus or taxi. Please be advised that public transport is the cheapest option. Please refer to the pre-arrival information that we send you for more details.



Follow our latest news

- @oncampusglobal
- @oncampus_global
- @oncampus_uusa
- @oncampus.global
- @studentsofoncampus

HEAD OFFICE

Cambridge Education Group

51-53 Hills Road, Cambridge,
CB2 1NT, United Kingdom

Telephone: +44 (0)1223 345698

Email: admissions@oncampus.global

Web: www.oncampus.global

CENTRE ADDRESS

ONCAMPUS Loughborough
Loughborough University,

Epinal Way,
Loughborough
LE11 3TU



www.carbonbalancedprinter.com
Healeys Print Group - Reg. 2108

Information in this brochure is correct at time of issue in January 2024. ONCAMPUS and the University Partner reserve the right to alter, reschedule or close courses which do not remain viable; students will be informed. Please check our website at www.oncampus.global for updated information.