



# Accommodation — IN SOUTHAMPTON

2023

**ONCAMPUS**  
**SOUTHAMPTON**

# Welcome

**ONCAMPUS** aim to make sure that finding a place to live while you study with us is quick and easy. It is very important that you have a place to stay when you arrive in the UK, and while you can choose to organise your own accommodation, we strongly recommend that all students book a room through our free service.

Booking with us ensures that you will have a safe, comfortable environment, and that you will be housed with other **ONCAMPUS** students, which is a great opportunity to make friends!

We have a fantastic residence available for you to book, offering good value for money. We strongly recommend booking early as accommodation places sell out fast. The following pages contain lots of information and at the back of this pack there is a quick summary table. There is also a price list and details on how to reserve a room.

If you have any questions that are not covered in this guide, or you just want some advice, please contact us at [liveinsouthampton@oncampus.global](mailto:liveinsouthampton@oncampus.global) and we will be happy to help.

We look forward to welcoming you  
to **ONCAMPUS** Southampton.  
The Accommodation Team





## London Road

STUDIOS/NON-ENSUITES

Located just 2 minutes away from ONCAMPUS, London Road offers stylish student living in central Southampton, in the wonderful setting of East Park.

Within the Brunswick main building all students have access to a wide range of communal facilities such as study rooms, fitness gym, communal spaces, games room, cinema room and a large shared kitchen perfect for group bookings and celebrations.

West Quays shopping centre, the town centre and the train station are all around a 10-minute walk from the residence, making it a fantastic and convenient location to live!



**2 minute  
WALK TO  
ONCAMPUS**



**Wi-Fi**



**Bedding Pack  
included**



**Fully fitted  
Gym**



**Cinema  
Room**



**Study  
Rooms**



**Communal  
Spaces**



**Large Shared Kitchen  
(Group Bookings)**



**CCTV**



**Games  
Room**

### + Facilities Include:

Gym

Games Room

Study Rooms

Communal Spaces

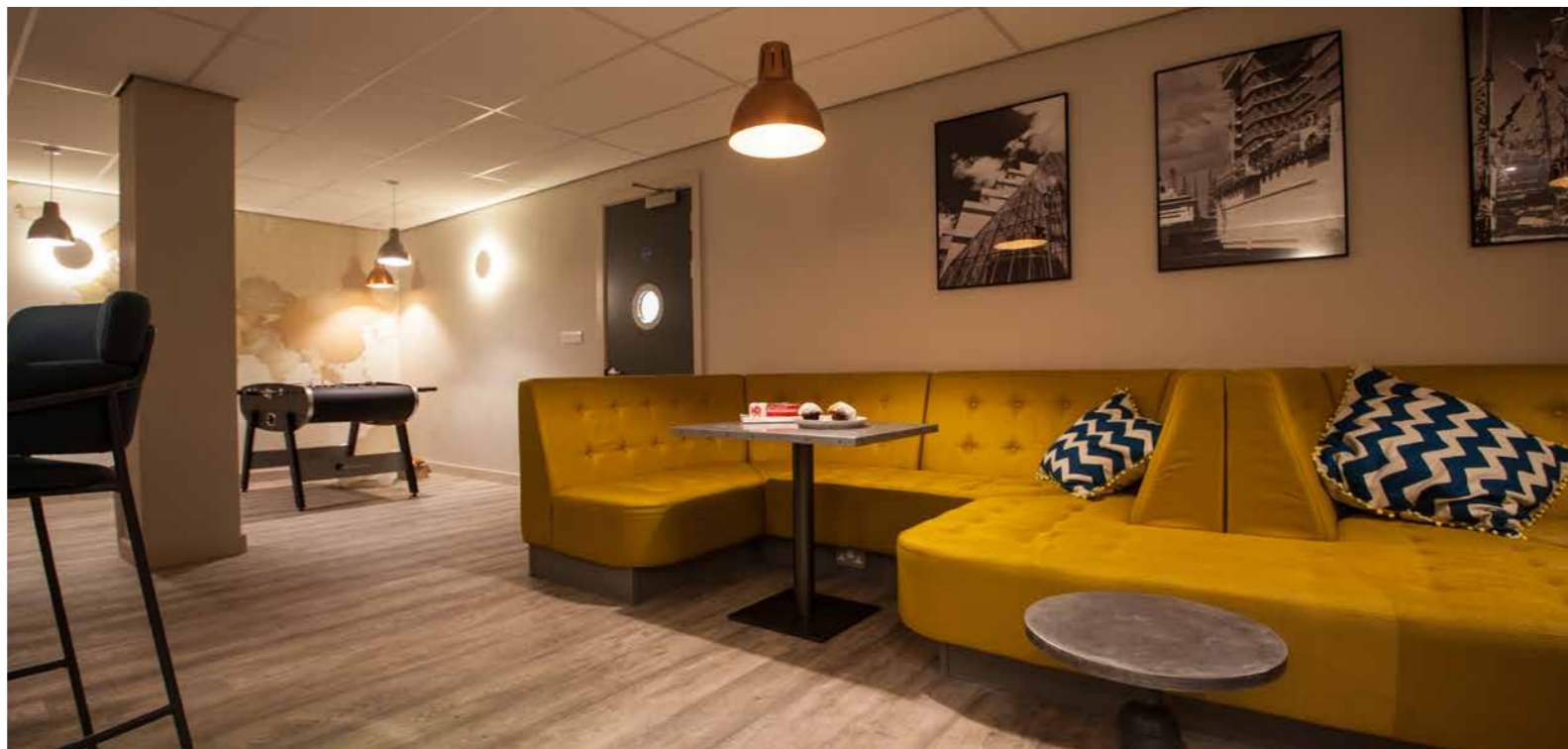
Large shared kitchen (group bookings)

Cinema Room

Bedding pack included

Secure door entry & CCTV

All utilities bills included



London Road is owned and managed by Hello Student

# Accommodation overview

Residence	LONDON ROAD		
Room type	Platinum Studio	Gold Studio	Silver Non-Ensuite
Bathroom	Private	Private	Shared (between 2)
Kitchen	Private	Private	Shared (between 2)
Catering	Self-catered		
Bedding Pack	Included		
Internet access	Up to 100mb/s		
Travel time to ONCAMPUS	2-minute walk		
Age suitability	17+		
Refundable Damage Deposit	£250		
Cost per term	£3,300	£3,200	£2,375

# How to apply



**1** Complete and return the Accommodation Preference Form to [liveinsouthampton@oncampus.global](mailto:liveinsouthampton@oncampus.global)



**2** We will confirm availability and send you a room offer



**3** Read and accept your room offer and return it back to us with your initial payment



**4** We will reserve your room and send you a booking confirmation



**5** Book your flight and let us know your arrival date. If you need an airport pick up we are happy to provide you with a quote



**6** Arrive in the UK and collect your room keys!



**Don't miss out!**  
We recommend booking your room as soon as possible to ensure your preferred choice is available.



**Airport pick-up**  
Please contact [liveinsouthampton@oncampus.global](mailto:liveinsouthampton@oncampus.global) and we will be happy to assist in booking an airport arrival transfer.

# ONCAMPUS SOUTHAMPTON ACCOMMODATION PREFERENCE FORM

Please complete the application form and return it to us at [liveinsouthampton@oncampus.global](mailto:liveinsouthampton@oncampus.global)

Personal details	
Full name:	Student ID:
Course start date:	Gender:
Course end date:	Age at start of course:
Nationality:	Date of Birth:

**Congratulations on receiving an offer at**  
**ONCAMPUS**  
**SOUTHAMPTON**

We will make every effort to provide you with the accommodation of your choice. However due to the large volume of applications we process, preferences cannot always be guaranteed. Rooms will be allocated on a first come, first served basis according to availability.

Please list at least a 1st and 2nd choice of room type.

Accommodation	Price Per Term	Apply
London Road - Platinum Studio 17+	£3300	
London Road - Gold Studio 17+	£3200	
London Road - Silver Non-Ensuite 17+	£2375	

## Got a question about accommodation?

Contact the accommodation booking team at [liveinsouthampton@oncampus.global](mailto:liveinsouthampton@oncampus.global)