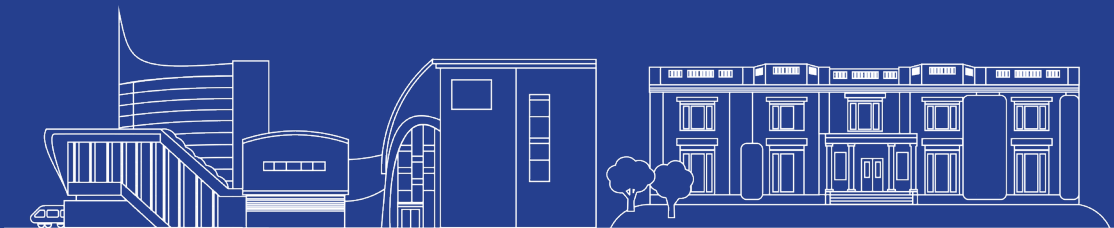


ONCAMPUS
READING



Achieve more
and progress to



Henley
Business School

UNIVERSITY OF READING

2021-2022

About Henley Business School

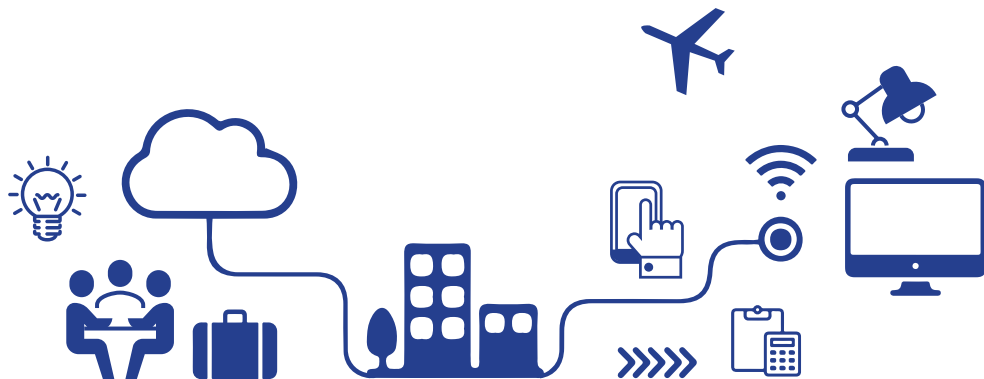
Founded in 1945, Henley is one of the oldest business schools in the UK and is part of the University of Reading. It is widely recognised for its diversity and international reach with 150 academics from 18 countries, and more than 7,000 students from more than 140 countries.

Triple Accredited



Industry connections

include BMW, British Airways, BT, Capita, Citi, Cushman Wakefield, Deloitte, Disney, EY, HSBC, KPMG, Microsoft, Oracle, Porsche, SAP and Savills.



UK
2nd
for Land and Property
Management

(Undergraduate level, Complete University Guide, 2021)



5th
for Masters in Finance

Out of all UK business schools included in the Financial Times Global Masters in Finance ranking 2020



5th
for graduate
career prospects
in Business, Management
and Marketing

(Undergraduate level, Complete University Guide, 2021)

Undergraduate degrees you can **progress to**

Students who meet the required criteria will have the opportunity to progress onto one of the following undergraduate degrees at the University of Reading:



Business pathway - delivered in Reading

Pass mark for progression

Academic modules:
AAA-CCC
(dependent on degree)

English Level Required

OCTOE
(internal assessment): **65%**
(no element lower
than **55%**)

*courses require GCSE Mathematics at grade B/6 (or equivalent).
If applicant cannot demonstrate they meet this requirement with qualifications taken prior to the foundation, Mathematics must be taken in the foundation.
**Pure Maths must be studied on the Business Pathway.
¹course requires GCSE Biology, Chemistry or Combined Science at grade C/4 (or equivalent). If applicant cannot demonstrate they meet this requirement with qualifications taken prior to the foundation, one of the above subjects must be taken in the foundation.

BA Accounting & Business Flying Start degree
BA Accounting & Management
BA Accounting & Management with Placement Experience
BA Economics
BA Economics with Placement Year
BA International Relations & Economics
BA International Relations & Economics with Placement Year
BA Politics & Economics
BA Politics & Economics with Placement Year
BSc Accounting & Finance
BSc Accounting & Finance with Placement Experience
BSc Agricultural Business Management
BSc Business & Management
BSc Business & Management (Accounting)
BSc Business & Management (Accounting) with Placement Year
BSc Business & Management (Accounting) with Year Abroad
BSc Business & Management (Data Analytics & Digital Business)
BSc Business & Management (Data Analytics & Digital Business) with Placement Year
BSc Business & Management (Data Analytics & Digital Business) with Year Abroad
BSc Business & Management (Entrepreneurship)
BSc Business & Management (Entrepreneurship) with Placement Year
BSc Business & Management (Entrepreneurship) with Year Abroad
BSc Business & Management (Marketing)
BSc Business & Management (Marketing) with Placement Year
BSc Business & Management (Marketing) with Year Abroad
BSc Business & Management with Placement Year
BSc Business & Management with Year Abroad
BSc Business Economics
BSc Business Economics with Placement Year
BSc Consumer Behaviour & Marketing
BSc Consumer Behaviour & Marketing with Placement Year
BSc Economics
BSc Economics & Econometrics
BSc Economics & Econometrics with Placement Year
BSc Economics & Finance
BSc Economics with Placement Year
BSc Environmental Management

Business pathway- delivered in Reading



BSc Environmental Management with Placement Year
 BSc Finance
 BSc Finance (FinTech)
 BSc Finance (FinTech) with Placement Year
 BSc Finance (FinTech) with Year Abroad
 BSc Finance (International Business)
 BSc Finance (International Business) with Placement Year
 BSc Finance (International Business) with Year Abroad
 BSc Finance (Investments)
 BSc Finance (Investments) with Placement Year
 BSc Finance (Investments) with Year Abroad
 BSc Finance (Sustainable Finance)
 BSc Finance (Sustainable Finance) with Placement Year
 BSc Finance (Sustainable Finance) with Year Abroad
 BSc Finance with Placement Year
 BSc Finance with Year Abroad
 BSc Food Marketing & Business Economics
 BSc Food Marketing & Business Economics with Placement Year
 BSc International Business & Management
 BSc International Business & Management with a Modern Language
 BSc International Business & Management with a Modern Language with Placement Year
 BSc International Business & Management with a Modern Language with Year Abroad
 BSc International Business & Management with Placement Year
 BSc International Business & Management with Year Abroad
 BSc International Development
 BSc International Development with Placement Year
 BSc Investment & Finance in Property
 BSc Real Estate
 BSc Real Estate with MSc Diploma in Urban Planning & Development

Business pathway- delivered in London

Pass mark for progression

Academic modules:
AAA-CCC
 (dependent on degree)

English Level Required

OCTOE
 (internal assessment): **65%**
 (no element lower than **55%**)

BA French & Economics
 BA French & Management Studies
 BA German & Economics
 BA German & Management Studies
 BA Italian & Economics
 BA Italian & Management Studies
 BA Spanish & Economics
 BA Spanish & Management Studies
 BSc Food Science with Business
 BSc Food Science with Business with Industrial Training
 BSc Nutrition with Food Consumer Sciences
 BSc Nutrition with Food Consumer Sciences with Professional Training
 BA Primary Education with Maths



Henley
Business
School



Master's degrees you can **progress to**

Students who meet the required criteria will have the opportunity to progress onto one of the following postgraduate degrees at the University of Reading:

*Students may progress with IELTS 6.5 if undertaking the three week pre-sessional.



Business pathway - delivered in Reading

PASS MARK FOR PROGRESSION

ACADEMIC MODULES:
50%

RESEARCH MODULE:
60%

ENGLISH LEVEL REQUIRED

(IELTS): 6.5 (NO ELEMENT
LOWER THAN 5.5)

* Students need to have achieved a 2:2 in their Bachelor's degree from a recognised university

MSc Accounting and Finance (IELTS 6.5 with no element less than 6.0)

MSc Accounting and Financial Management

MSc Accounting and International Management

MSc Behavioural Finance

MSc Corporate Finance

MSc Finance and Financial Technology (FinTech)

MSc Financial Risk Management

MSc Information Management & Digital Business - Big Data in Business

MSc Information Management & Digital Business - Digital Health & Data Analytics

MSc Information Management & Digital Business - Digital Innovation

MSc International Human Resource Management (IELTS 6.5 with no element less than 6.0)

MSc Investment Management

MSc Marketing (Consumer Marketing)

MSc Marketing (Digital Marketing)

MSc Marketing (International Marketing)

MSc Finance (IELTS 6.5 with no element less than 6.0)

MSc International Business and Finance

MSc Management

MSc Management (International Business)

MSc Business Technology Consulting

MSc Capital Markets, Regulation and Compliance

MSc Economics and Finance

MSc Entrepreneurship (Creative Industries)

MSc Entrepreneurship (Financing)

MSc Entrepreneurship (Leadership)

MSc Economics and Finance

MSc Entrepreneurship (Creative Industries)

MSc Entrepreneurship (Financing)

MSc Entrepreneurship (Leadership)

MSc Financial Engineering

MSc International Shipping and Finance



www.carbonbalancedprinter.com
Healeys Print Group - Reg. 2108



ONCAMPUS
READING

Visit www.oncampus.global

00832