



Art and Design

Undergraduate Foundation

Art and Design

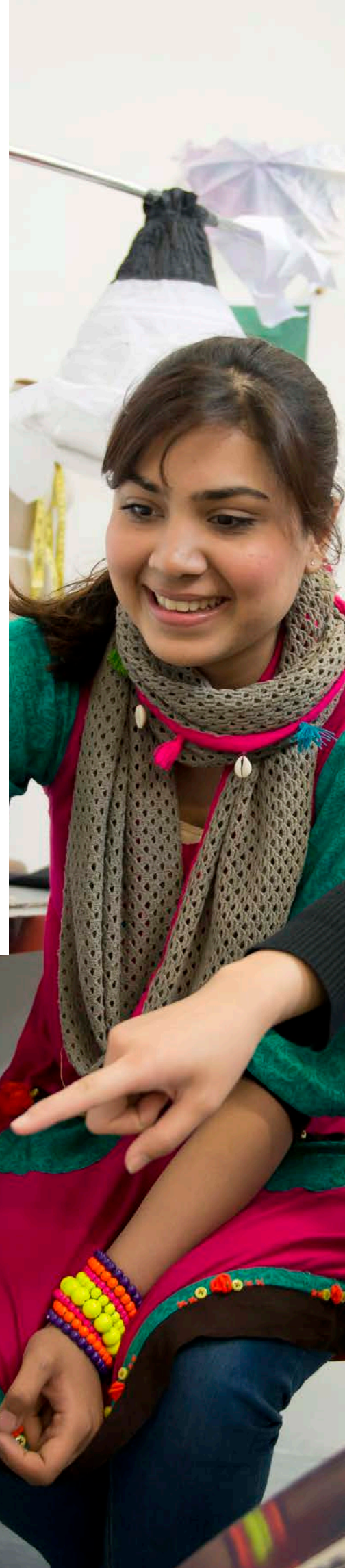
Undergraduate Foundation Programme

Art and Design Foundation 04

Where can I study? 06

Progression Degrees 09

How to apply 10





**“The course has developed
my knowledge and skills
and I feel much more
prepared for university.”**

- ZILE WANG CHINESE

Art and Design Foundation

KEY FACTS:

Locations:

ONCAMPUS Coventry

ONCAMPUS London South Bank

ONCAMPUS Reading

Guaranteed progression* to:

Coventry University

London South Bank University

University of Reading

Length: 3 terms (Intensive 2-term and extended 4 & 5-term options available***)

Classes: Average 25 hours per week (plus homework and private study)

Level**: Completed 11-12 years of schooling

English level**: From 4.5 IELTS or equivalent, with no single element less than 4.0

Dates and Fees:

Tuition fees start from £12,900 per year

***Start dates are available in September, November, January and March

Typical career options

- Fashion
- Illustration
- Graphic Design
- Product Design
- Packaging Design
- Interior Design

*Opportunity for progression is subject to meeting specified entry criteria

**Individual centre entry requirements vary.

Please check website for details

***Availability varies by centre

Modules

Design

The aim of the module is to enable students to develop skills and understanding of the design process and skills involved.

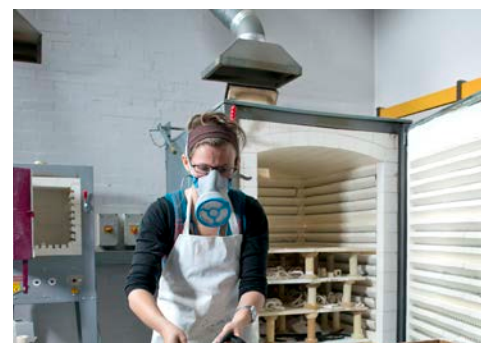
Students will:

- Be introduced to the design development cycle through specific project briefs and apply this through the creation of design projects
- Develop an understanding of the importance of using the appropriate methods to achieve their creative intentions.
- Develop the necessary research and analysis, synthesis, and time management skills, as well as teamwork and organisational skills.
- Learn how to communicate their ideas and intentions professionally, through visual and verbal communication techniques. Students will learn how to mount their work and any computer-based activities involved with the presentation of practical work. Formats can vary from paper-based examples of actual art and design work, to printed outputs from computer-based work, to showreels or DVD presentations of film, installation or animation.

Visual Arts

The aim of the module is to enable students to develop skills and understanding of the design process and skills involved.

The format of the module is to be used to develop students' 2D and 3D skills and to a high level of independence in producing their own work.



Visual Communication

The aim of this module is to enable students to develop their understanding of how to communicate different meanings and messages, through the manipulation of formal elements in 2D, 3D or on-line-based media as a means of creating a range of imagery and artefacts for different purposes.

The form that works of art and design take, and the media and techniques used to communicate meaning, will vary according. This module will enable students to develop skills in the use of 2D and 3D materials and techniques, and to apply these in their own independent work and to their specialisms (for example fashion, product design or architecture).

Skills for Art and Design

This module aims to broaden students' skills, knowledge and understanding of creative thinking in contemporary and historical art and design, in order to inform their own practice.

They will:

- Explore the work of others in terms of visual and textual language, analysing relevant characteristics, content and meaning in relation to their own creative practice.
- Be encouraged to consider alternative approaches, challenging conventions, asking questions and engaging in debate with peers and tutors.
- Develop an understanding of historical and related contexts that will inform and inspire their own creative work and help them to develop personal intentions in their chosen specialism.

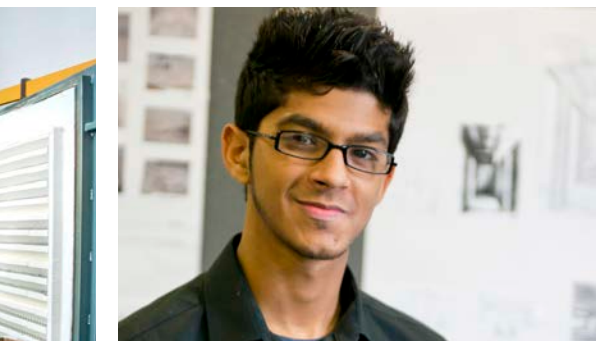
- The Undergraduate Foundation Programme (UFP) is a specialist programme designed to provide international students with the quickest pathway to a degree in Art and Design.
- It replaces the need for a separate foundation year which is typically required before an undergraduate degree and allows international students to access study in this subject area without an existing portfolio.



for entry to **ONCAMPUS**
Art and Design UFP at:

ONCAMPUS
London South Bank

ONCAMPUS
Reading





Progression degrees

ONCAMPUS programmes can offer progression to a range of Art and Design degrees.

	Coventry University	London South Bank University	University of Reading
UNDERGRADUATE DEGREES			
BA (Hons) Art			★
BA (Hons) Art and Film			★
BA (Hons) Art and Film and Theatre			★
BA (Hons) Art and History of Art			★
BA (Hons) Art and Theatre			★
BA (Hons) Architecture	★	★	
MDes/BA (Hons) Automotive Transport Design	★		
BA (Hons) Creative Advertising With Marketing		★	
BA (Hons) Digital Design		★	
BA (Hons) Drama and Performance		★	
BA (Hons) Fashion	★		
BA (Hons) Film			★
BA (Hons) Film and English Studies		★	
BA (Hons) Film Practice		★	
BA (Hons) Film Studies		★	
BA (Hons) Film and Theatre			★
BA (Hons) Fine Art	★		
BA (Hons) Fine Art & Illustration	★		
BA (Hons) Graphic Communication			★
BA (Hons) Games Design and Development		★	
BA (Hons) Graphic Design	★		
BA (Hons) Illustration & Animation	★		
BA (Hons) Illustration & Graphics	★		
MDes/BA (Hons) Interior Design	★		
BA (Hons) Journalism		★	
BA (Hons) Media Production			
BA (Hons) Photography	★	★	
MDes/BA (Hons) Product Design	★	★	
BA/BSc (Hons) Sound Design		★	
BA (Hons) Theatre			★
BA (Hons) Visual Effects		★	
BA (Hons) Web Production and Social Media		★	

**ONCAMPUS
COVENTRY**

Opportunity for progression* to Art and Design degrees at University of the Year 2015

Quality teaching,
employable graduates,
state-of-the-art facilities,
strong links with industry
and an innovative and
dynamic approach to
learning are just a few
highlights of studying
with Coventry University.

Over 20,000 students,
including 8,000
international students
from more than 130
countries, study on the
diverse and vibrant
campus, offering a
real global community
and truly international
experience.



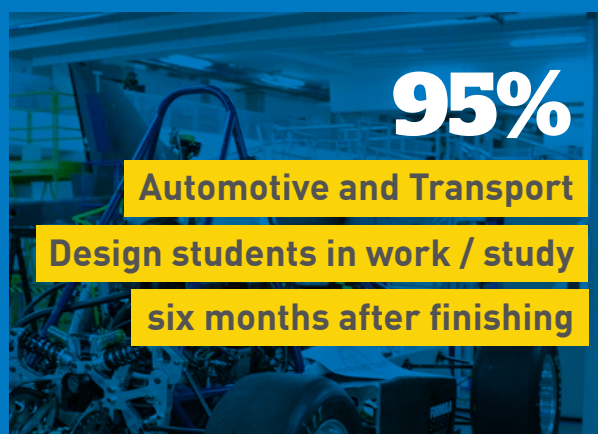

**Coventry
University**

Ranked No.

12

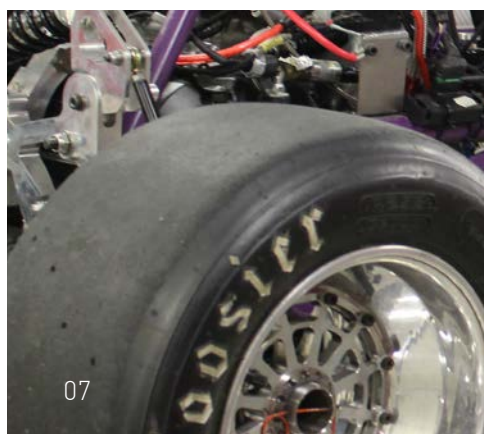
UK University

(Guardian University Guide 2018)



**Film production
and Photography
ranked
1st
in the UK**

(Guardian University Guide 2018)



07





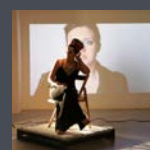
Guaranteed opportunity for progression to Art and Design degrees at a historic UK university

The University of Reading is an outstanding educational institution, with an internationally renowned reputation for the quality of its research and the excellence of its teaching, positioned 25th in the UK by the QS World University Rankings 2016.

ONCAMPUS Reading offers a unique opportunity for international students to prepare for their Art and Design degree study with guaranteed opportunity for progression to this world-class institution celebrating 90 years of excellence as a university.

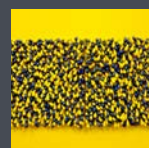


5th for film production & photography



(Guardian University Guide 2018)

9th in the UK for Art and Design



(The Sunday Times University Guide 2017)



ONCAMPUS LONDON SOUTH BANK



London
South Bank
University

EST 1892

Guaranteed progression* to Art and Design at one of the UK's leading modern universities

With over 25,000 students, LSBU is one of the largest universities in London, with students from 130 different countries.

Wherever students come from and whatever their goals and aspirations, they can look forward to an education that develops them both academically and personally, reflects the needs of business and society and equips them for a rewarding future career.



RIBA
accredited degree
programmes



NEXT steps

1

Submit students application by one of the following methods:
Online: www.oncampus.global Email: admissions@oncampus.global
Fax: +44 (0)1223 346181

Post: Admissions Office, ONCAMPUS, Kett House, Station Road,
Cambridge, CB1 2JH, United Kingdom

Please remember to include all relevant documentation:

- academic transcripts (with translations if not originally in English)
- evidence of English level
- passport.

Additional documentation may be required depending on the course.
Our Admissions team will contact you should this be the case.

2

Our Central Admissions team will review the application.

- We will send an offer letter which will list any outstanding conditions.

We will remove any conditions that have already been met.

- If we think the course is not right for the student, we will suggest an alternative.
- If we have any queries about the application, we will contact you for further information.

3

To accept your place on the course the student will need to meet all the remaining conditions, including payment of the deposit/ registration fee or proof of government sponsorship. Only once all conditions have been met, can the place be confirmed, although once the deposit is paid we will hold a place for the student.

- Please note that if the student requires a visa to study with us, they may need to provide additional evidence to comply with the visa regulations in the UK. These are the requirements of the government and not of **ONCAMPUS**. Your assistance in meeting these requirements is much appreciated.

4

Once the student has paid their deposit and met all the conditions of offer, we will confirm the place and send a CAS (Confirmation of Acceptance to Study) or a Confirmation of Enrolment (CoE) if they do not need a CAS. If the student needs a visa, they will need to use their CAS/CoE to support their visa application. Please note a CAS can only be issued three months before the start of the course.

- We will send pre-arrival information.
- The accommodation application form will be included in the pre-arrival information. The student should complete the form, selecting their preferred option, and return it to **ONCAMPUS** by email.

5

The student will then need to apply for a visa if they require one to study in the UK. It is their responsibility to obtain a visa before they travel to join the course. If they do not have a valid visa, they will not be able to join the course so please make sure they apply as soon as possible.

6

The student will need to pay at least the first term's tuition fees before they begin their programme of study at **ONCAMPUS**.

- They should arrive on the weekend before the arrival date; please check their CAS statement or CoE for further details.
- Directions to our **ONCAMPUS** centres are included in the pre-arrival information we will send the student. Airport transfers are also available.

"I feel like I'm learning

more here. Everyone is

appreciated for what they

know and their talents."

- SAHBA ZARGARI
IRANIAN



High-quality teaching and programmes

Through every step your students will be supported by highly qualified teachers and support staff, both in and outside the classroom. Their personal tutor will meet with them regularly to ensure they are on track to pass the programme and progress to their chosen degree. We are also reviewed regularly by the **Quality Assurance Agency (QAA)**, which is responsible for maintaining standards across the UK university system, so you can be sure your students are receiving high-quality teaching.

Outstanding student outcomes

ONCAMPUS is part of Cambridge Education Group, one of the UK's leading university pathway providers since 1952. Cambridge Education Group was the first private institution to offer university foundation programmes in the UK in 1985, and every year we support over **1,000 students** to reach the degree programmes they aspire to, placing **ONCAMPUS** students with our world and nationally ranked partners.

Safe and supportive environments

Students are supported throughout their journey by an outstanding level of teaching. Our highly qualified staff offer support both inside and outside the classroom, and every student is assigned a personal tutor to ensure they remain on track to achieve their goals and progress to their chosen degree course.

Choice and flexibility

Our **ONCAMPUS** centres offer guaranteed progression* for students wanting to study Undergraduate Foundation Programmes, International Year One or Master's Foundation Programmes to a range of degrees at our partner universities. If your students want a wider range of options at **ONCAMPUS** London we support students in achieving places at top-ranked UK universities including LSE, King's College London and Durham University.

*Guaranteed progression is subject to meeting the specified entry criteria



ONCAMPUS
Cambridge Education Group

www.oncampus.global